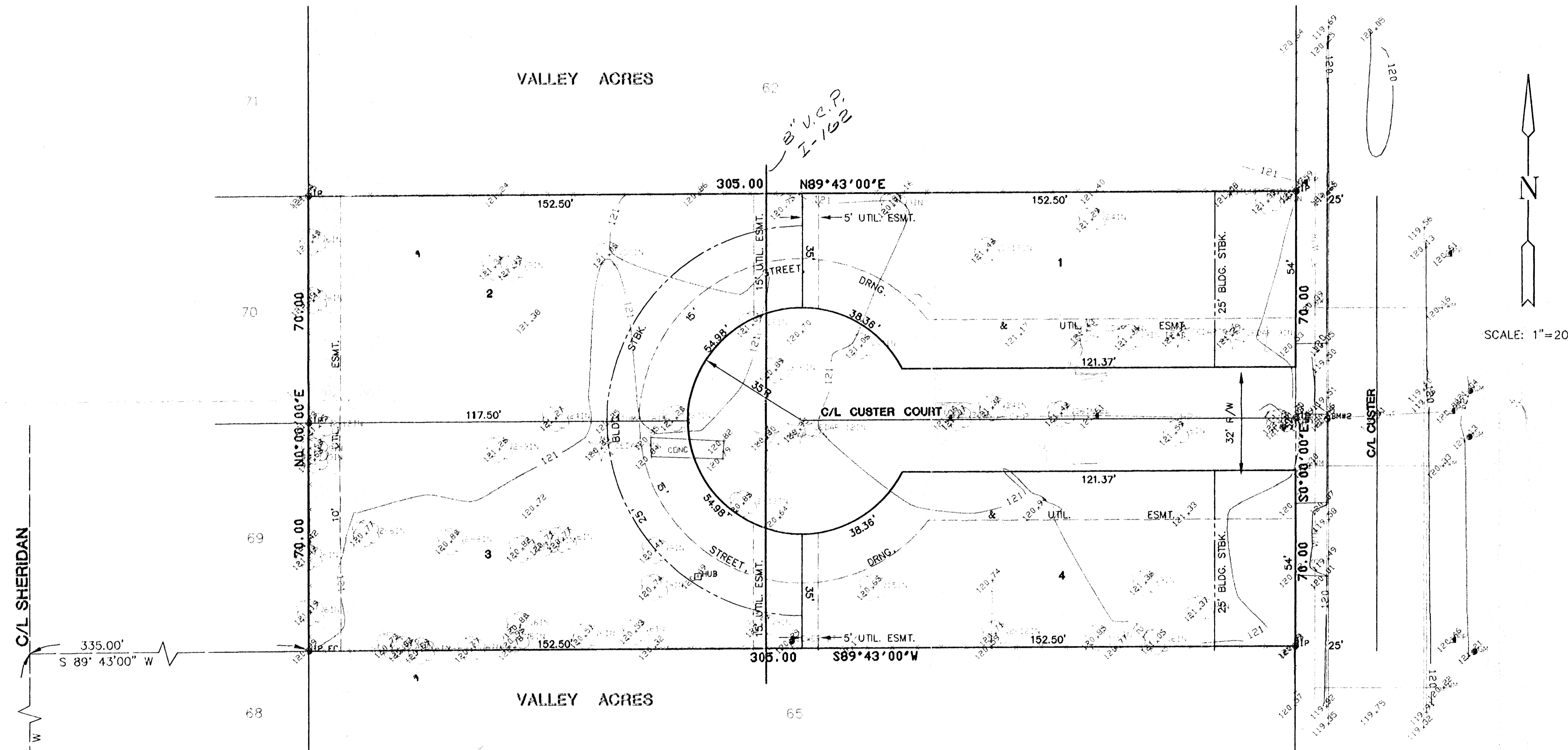


PRELIMINARY PLAT  
FOR  
**EBERSOLE ADDITION**  
AN ADDITION TO WICHITA, SEDGWICK CO., KANSAS



**LEGEND**

- ⊙<sup>SM</sup> — STORM SEWER MANHOLE
- ⊙<sup>WM</sup> — WATER METER
- ⊙<sup>SMH</sup> — SAN SEWER MANHOLE
- <sup>KGB</sup> — KG&E BOX
- <sup>IP</sup> — PROPERTY PIN
- <sup>LP</sup> — LIGHT POLE
- — GUARD POST
- <sup>SN</sup> — SIGN
- <sup>PP</sup> — POWER POLE
- <sup>TR</sup> — TELEPHONE RISER
- ⊙ — CLEANOUT
- <sup>GM</sup> — GAS METER
- ⊙<sup>FH</sup> — FIRE HYDRANT
- — GAS LINE
- — FENCE
- — SANITARY SEWER LINE
- — STORM SEWER LINE
- — TELEPHONE LINE
- — WATER VALVE
- — OVERHEAD POWER

BM 1 SQUARE CUT ON TOP OF CURB AT THE NORTH END OF THE NORTHWEST RETURN AT 11TH STREET & CUSTER ELEV. = 120.60

BM 2 SQUARE CUT ON TOP OF WEST CURB OF CUSTER 230 FEET SOUTH OF CL OF 11TH STREET ELEV. = 120.10

TOP OF MANHOLE = 121.08  
FL IN E & S = 112.80  
FL OUT W = 112.75

