

NOTES

PRELIMINARY TOPOGRAPHY PREPARED BY DOBLER SURVEYING AND ENGINEERING DEC. 1987
 DRAINAGE STUDY PREPARED BY MID-KANSAS ENGINEERING CONSULTANTS P.A.
 BENCHMARK:



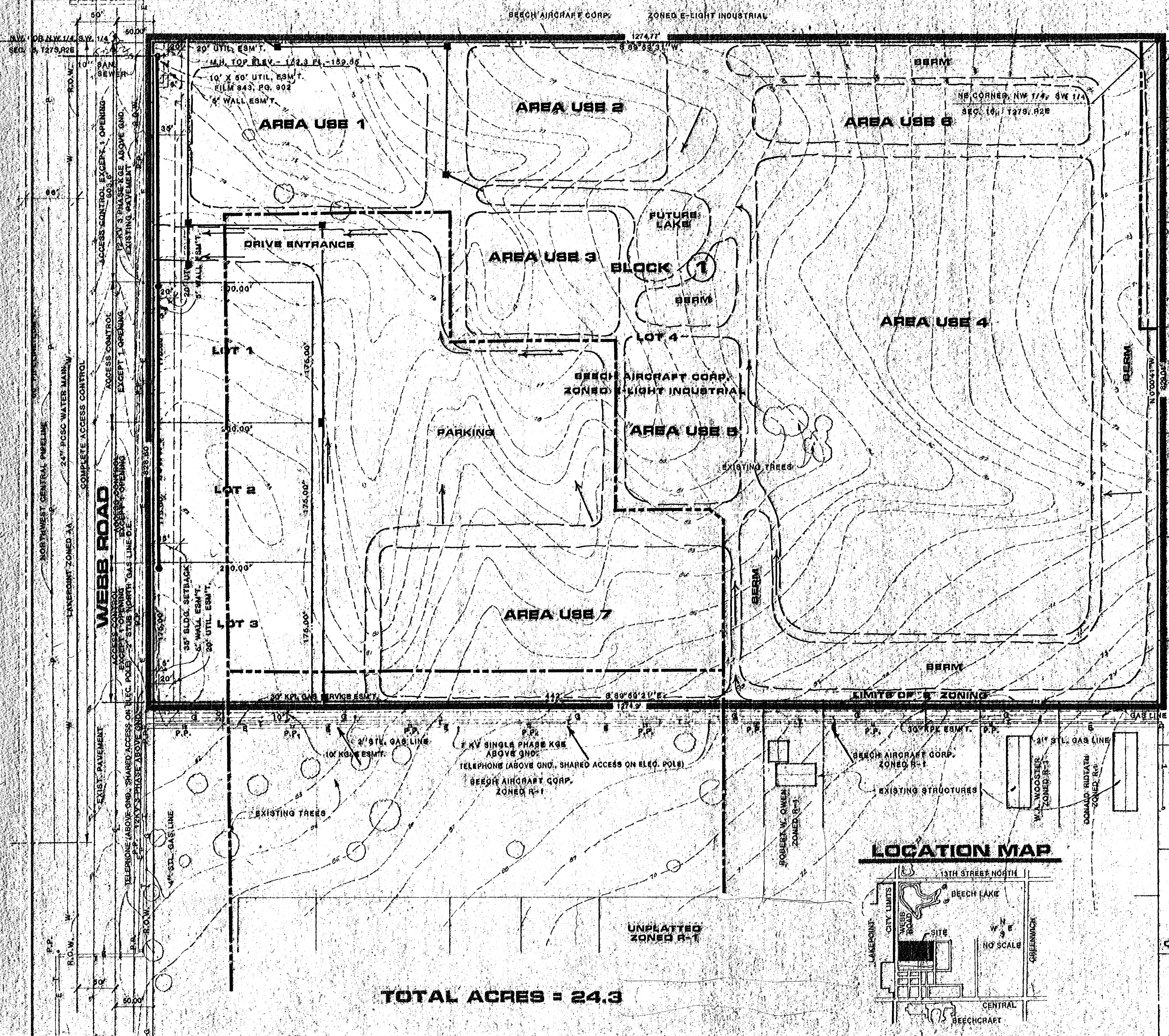
BILL G. YUNG DESIGN
 612 E. 20TH STREET, NORTH WICHITA, KS 67201
 316-683-1111

date: JAN. 26, 1988
 rev.:

sheet title: PRELIMINARY PLAN

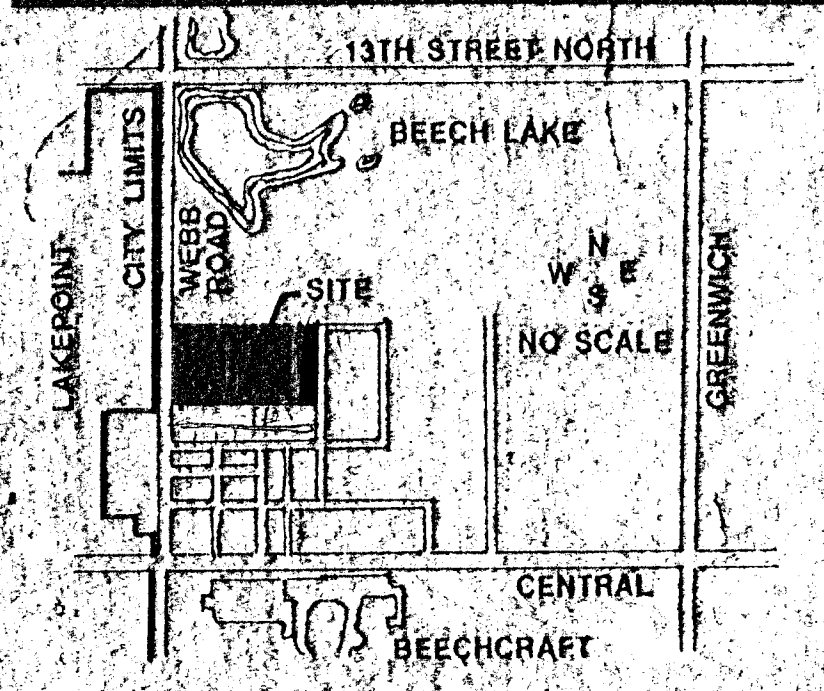
project: EAST SIDE DEVELOPMENT

project: EAST SIDE DEVELOPMENT



LYNCH ADDITION ZONED R-1

LOCATION MAP



SCALE 1"=60'
 CONTOUR INTERVAL = 1'

TOTAL ACRES = 24.3

DRAINAGE & UTILITY CONCEPT

EAST SIDE DEVELOPMENT DEVELOPMENT

LEGEND-

- DRAINAGE DIVIDE
- - - PROP. SANIT. SEWER
- - - (BY PARTITION)
- - - PROP. STORM SEWER
- - - (PRIVATE)
- - - DRAINAGE ARROWS

OWNER: BEECH AIRCRAFT CORP. P.O. BOX 86 WICHITA, KS 67201