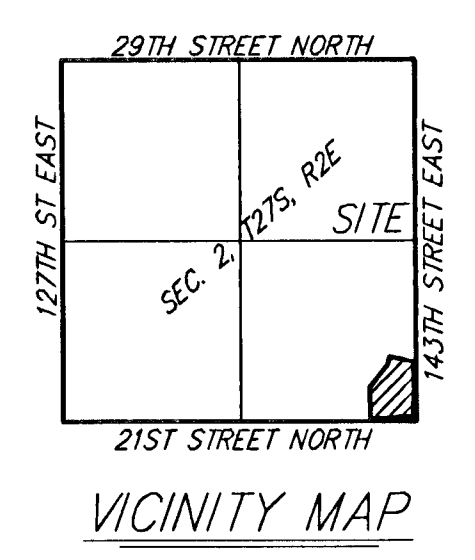
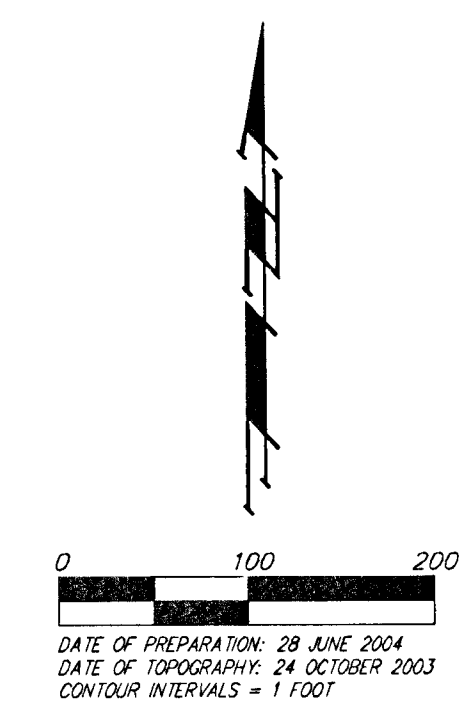
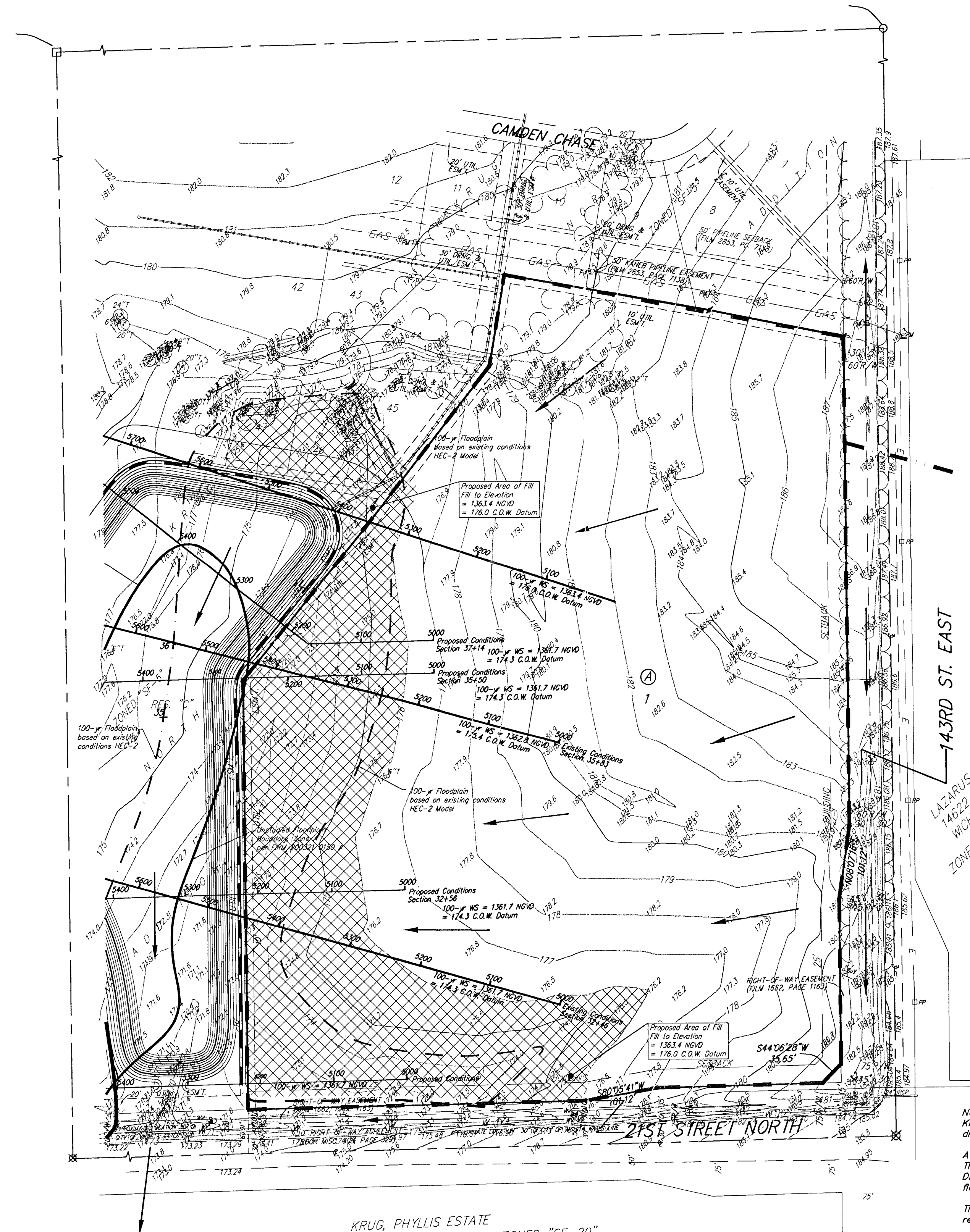


DRAINAGE PLAN

EASTSIDE COMMUNITY CHURCH 2ND ADDITION

WICHITA, SEDGWICK COUNTY, KANSAS



- = #4 REBAR W/ "BAUGHMAN" CAP (FOUND)
 - = #4 REBAR W/ "BAUGHMAN" CAP (SET)
 - = BRASS MONUMENT MARKED "TILS" IN CONCRETE (FOUND)
 - ⊗ = 3/4" IRON (FOUND)
 - = #6 REBAR (FOUND)
- (M) = MEASURED
 - (D) = DESCRIBED
 - (P) = PLATTED
 - (C) = CALCULATED
 - (C-D) = CALCULATED PER DESCRIBED INFO.
- PP □ = Power Pole
 - PH ○ = Fire Hydrant
 - GP ○ = Guy Pole
 - GA ⊖ = Guy Anchor
 - WV ⊕ = Water Valve
 - PM Δ = Pipeline Marker

BENCHMARK:
 "TIL" CUT IN THE MIDDLE OF THE N. HEADWALL OF R.C.B.C. ON 21ST STREET NORTH, 1004.3' W. & 22.1' N. OF THE SE COR. SE 1/4, SEC. 2, TWP. 27-S, R-2-E, ELEV. = 1732.3 CITY DATUM (1360.63 NGVD29)

143RD ST. EAST
 LAZARUS ALAN A.
 14622 E. 21ST N.
 WICHITA, KS 67230
 ZONED "PR"

KRUG, PHYLLIS ESTATE
 78 TOM DRAKE ZONED "SF-20"
 7001 LARKSPUR LANE
 MIDDLETOWN, OH 45044

Notes: The detention pond designed for the Krug North Addition was intended to allow drainage from this property.

A permit application has been filed with the Kansas Department of Agriculture, Division of Water Resources for, channel change, floodplain fill, and appropriations.

The Army Corps of Engineers was also contacted regarding the proposed drainage improvements.

After major earthwork activities are completed, an application will be submitted to FEMA for a Letter of Map Revision (LOMR).

A minimum building pad will be established on this plot at the time of final approval.