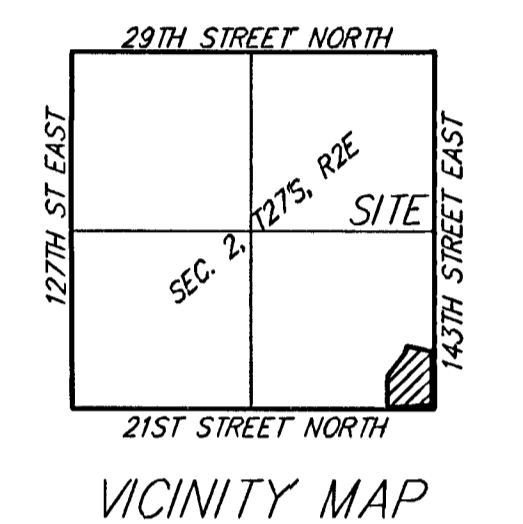
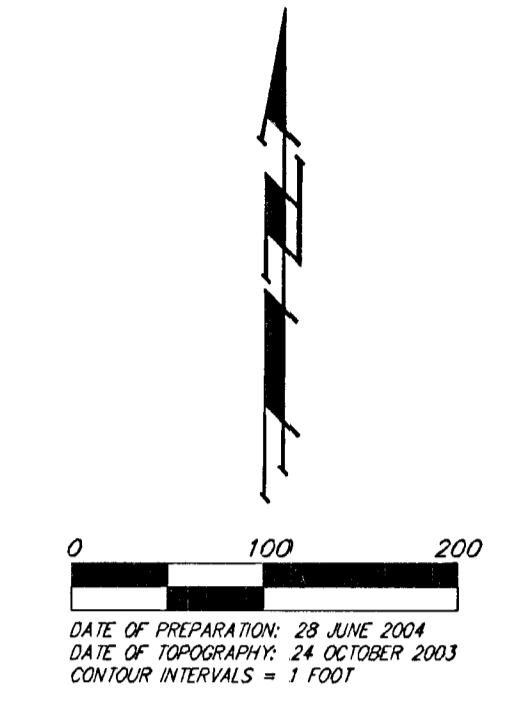
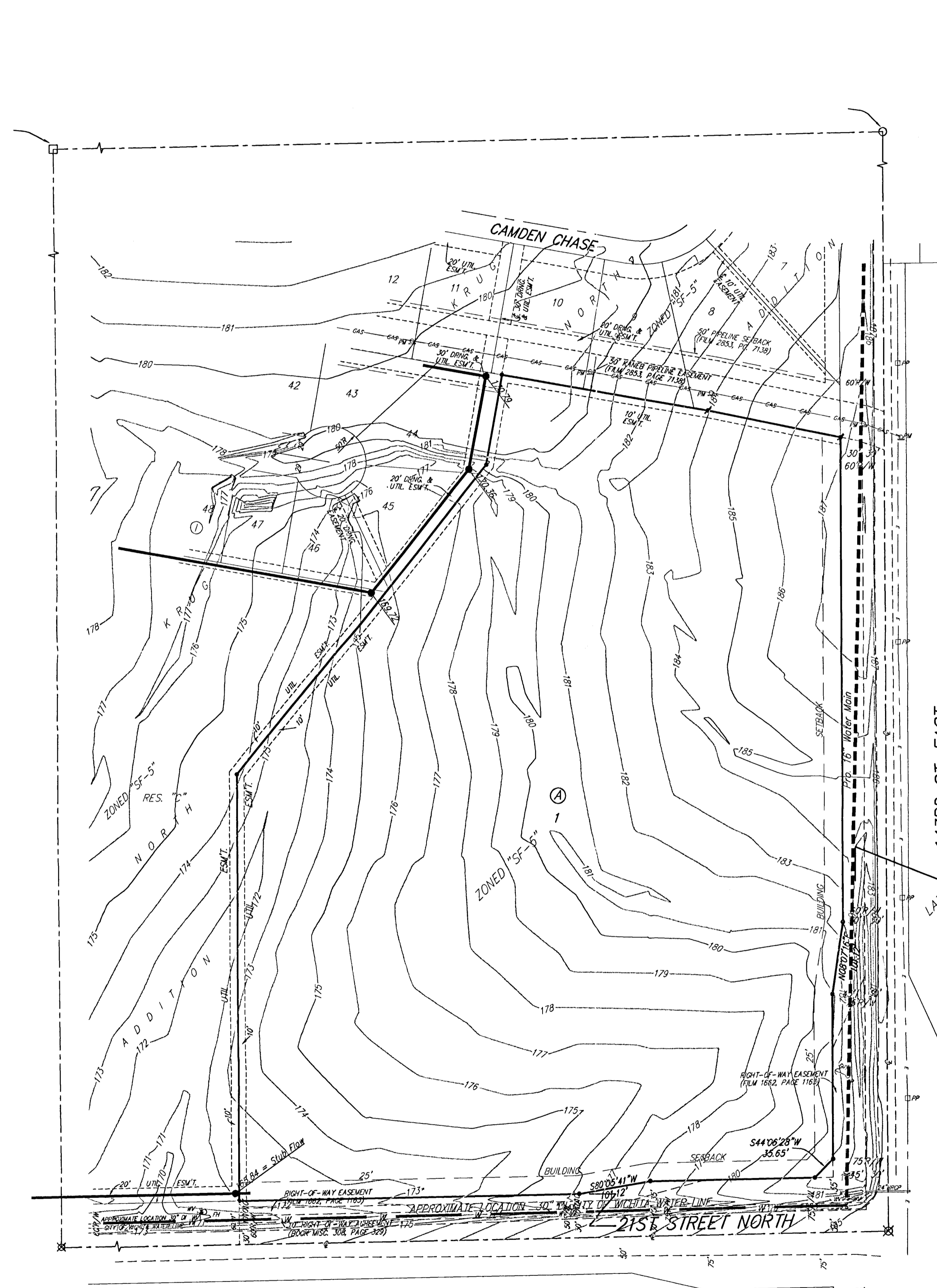


UTILITY PLAN

EASTSIDE COMMUNITY CHURCH 2ND ADDITION

WICHITA, SEDGWICK COUNTY, KANSAS



- = #4 REBAR W/ "BAUGHMAN" CAP (FOUND)
 - = #4 REBAR W/ "BAUGHMAN" CAP (SET)
 - = BRASS MONUMENT MARKED "TTL" IN CONCRETE (FOUND)
 - ⊗ = 3/4" IRON (FOUND)
 - = #6 REBAR (FOUND)
- (M) = MEASURED
 (D) = DESCRIBED
 (P) = PLATTED
 (C) = CALCULATED
 (C-D) = CALCULATED PER DESCRIBED INFO.
- PP □ = Power Pole
 FH ○ = Fire Hydrant
 GP ○ = Guy Pole
 GuyC = Guy Anchor
 WV = Water Valve
 PW D = Pipeline Marker
- BENCHMARK:
 "□" CUT IN THE MIDDLE OF THE N. HEADWALL OF R.C.B.C. ON 21ST STREET NORTH, 1004.1' W. & 221.1' N. OF THE SE COR. SET/4, SEC. 2, TWP. 27-S, R-2-E, ELEV. = 123.23 CITY DATUM (1380.63 NGVD29)

LEGEND:

-----	Proposed 8" Water Line
♀	Proposed Fire Hydrant
-----	Proposed 8" Sanitary Sewer
-----	Proposed 10" Sanitary Sewer
●	Proposed Manhole
⊙	Existing Manhole
-----	Existing 8" Sanitary Sewer
-----	Existing 10" Sanitary Sewer
--- GAS --- GAS --- GAS --- GAS ---	Gas Line
-----	Electric Line
-----	Water Line

KRUG, PHYLLIS ESTATE
 %TOM DRAKE ZONED "SF-20"
 7001 LARKSPUR LANE
 MIDDLETOWN, OH 43044