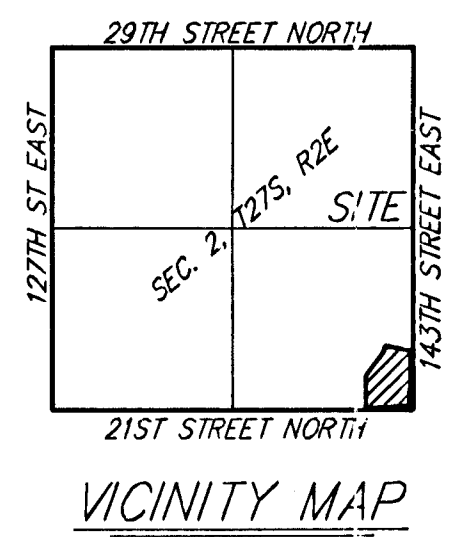
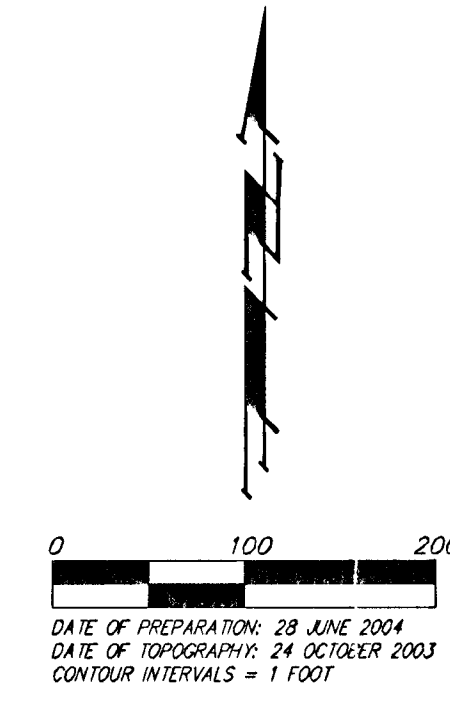
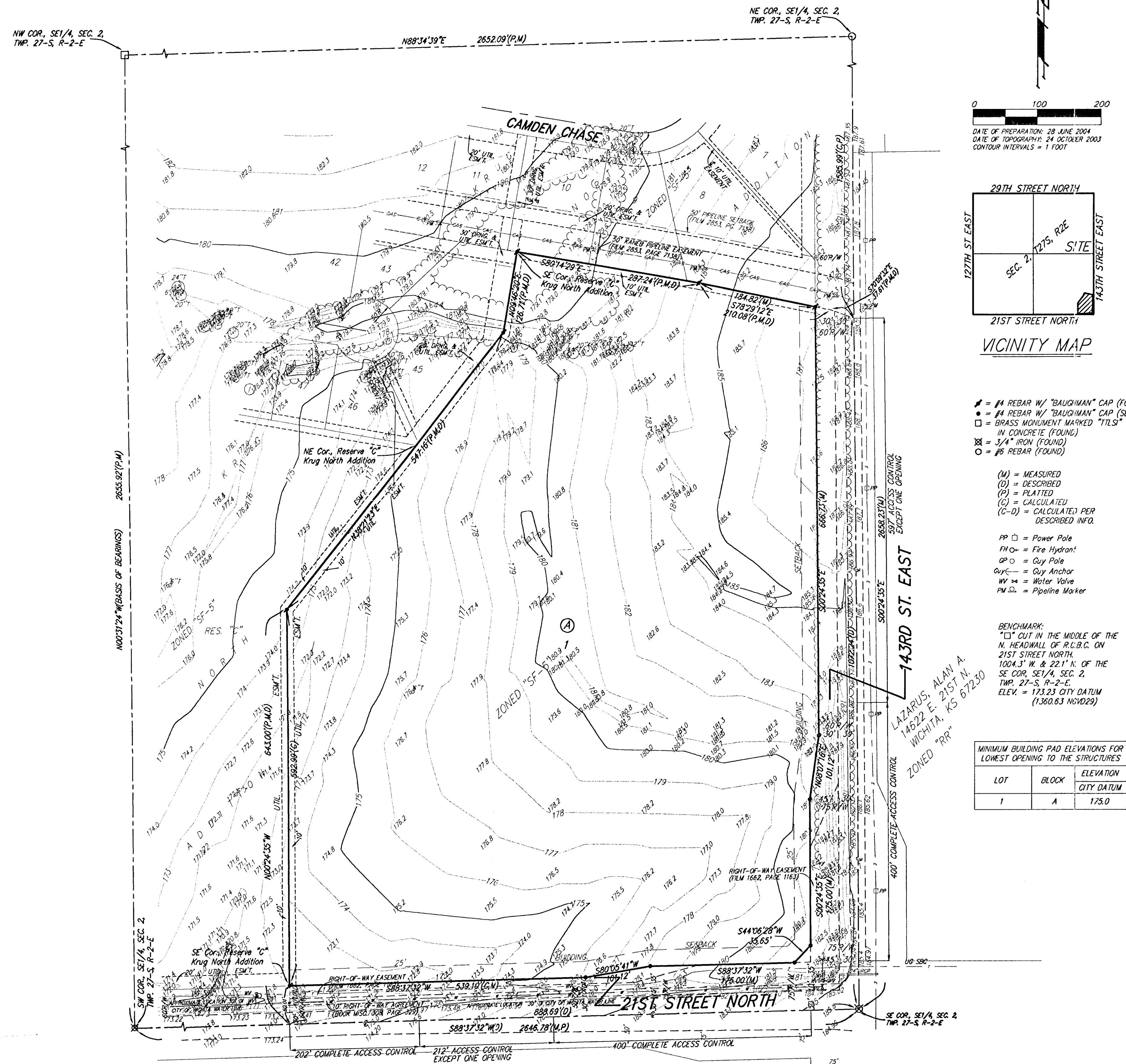


ONE-STEP FINAL PLAT

EASTSIDE COMMUNITY CHURCH 2ND ADDITION

WICHITA, SEDGWICK COUNTY, KANSAS



- = #4 REBAR W/ "BAUGHMAN" CAP (FOUND)
 - = #4 REBAR W/ "BAUGHMAN" CAP (SET)
 - = BRASS MONUMENT MARKED "TILE"
 - = IN CONCRETE (FOUND)
 - ⊗ = 3/4" IRON (FOUND)
 - = #6 REBAR (FOUND)
- (M) = MEASURED
 (D) = DESCRIBED
 (P) = PLATTED
 (C) = CALCULATED
 (C-D) = CALCULATED PER DESCRIBED INFO.
- PP □ = Power Pole
 FH □ = Fire Hydrant
 GP □ = Guy Pole
 AY □ = Guy Anchor
 WV □ = Water Valve
 PW □ = Pipeline Marker

BENCHMARK:
 "□" OUT IN THE MIDDLE OF THE N. HEADWALL OF R.C.B.C. ON 21ST STREET NORTH, 1004.3' W. & 22.1' N. OF THE SE COR. SE 1/4, SEC. 2, TWP. 27-S, R-2-E, WICHITA, KS 67230
 ELEV. = 1732.21 CITY DATUM (1300.63 NGVD29)

LOT	BLOCK	ELEVATION CITY DATUM
1	A	175.0

State of Kansas) SS We, Baughman Company, P.A., Surveyors in aforesaid county and state do hereby certify that we have surveyed and platted "EASTSIDE COMMUNITY CHURCH 2ND ADDITION", Wichita, Sedgwick County, Kansas and that the accompanying plat is a true and correct exhibit of the property surveyed, described as That part of the SE 1/4 of Sec. 2, Twp. 27-S, R-2-E of the 6th P.M., Sedgwick County, Kansas described as follows: Beginning at the SE corner of said SE 1/4; thence S88°37'32"W along the south line of said SE 1/4, 888.69 feet; thence N00°24'35"W parallel with the east line of said SE 1/4, 643.00 feet; thence N38°21'23"E, 547.16 feet; thence N09°46'20"E, 126.71 feet; thence S80°14'29"E, 287.24 feet; thence S78°29'12"E, 210.08 feet; thence S70°09'32"E, 37.61 feet to a point on the east line of said SE 1/4; thence S00°24'35"E along the east line of said SE 1/4, 1072.24 feet to the point of beginning, all being subject to road rights-of-way of record.

Existing public easements and dedications being vacated by virtue of K.S.A. 12-512(b).

Baughman Company, P.A.
 _____, Surveyor
 Michael G. Conrey

Know all men by these presents that we, the undersigned, have caused the land in the surveyors certificate to be platted into a Lot, a Block, and Streets, to be known as "EASTSIDE COMMUNITY CHURCH 2ND ADDITION", Wichita, Sedgwick County, Kansas. The utility easements are hereby granted as indicated for the construction and maintenance of all public utilities. The drainage and utility easements are hereby granted as indicated for drainage purposes and for the construction and maintenance of all public utilities. The streets are hereby dedicated to and for the use of the public. Access controls shall be as depicted on the face of the plat and are hereby granted to the City of Wichita, Kansas. The permitted opening locations shall be as determined by the City Engineer of the City of Wichita, Kansas. The Minimum Building Pad Elevations for the lowest opening to the structures shall be as indicated on the face of the plat.

East Side Community Church of God of Wichita, Kansas, Inc.
 _____, President
 Dennis Turner

State of Kansas) SS The foregoing instrument acknowledged before me, this _____ day of _____, 2004, by Dennis Turner, President of East Side Community Church of God of Wichita, Kansas, Inc., on behalf of the corporation.

_____, Notary Public
 My App't. Exp. _____

This plat of "EASTSIDE COMMUNITY CHURCH 2ND ADDITION", Wichita, Sedgwick County, Kansas has been submitted to and approved by the Wichita-Sedgwick County Metropolitan Area Planning Commission, Wichita, Kansas.
 Dated this _____ day of _____, 2004.
 Wichita-Sedgwick County Metropolitan Area Planning Commission

_____, Chair
 Ronald L. Marnell
 _____, Secretary
 John L. Schlegel

This plat approved and all dedications shown hereon accepted by the City Council of the City of Wichita, Kansas, this _____ day of _____, 2004.

_____, Mayor
 Carlos Mayans
 _____, City Clerk
 Karen Sublett

Reviewed in accordance with K.S.A. 58-2005 on this _____ day of _____, 2004.

Tricia L. Robello, L.S. #1246
 Deputy County Surveyor
 Sedgwick County, Kansas

Entered on transfer record this _____ day of _____, 2004.

_____, County Clerk
 Don Brace

State of Kansas) SS This is to certify that this plat has been filed for record in the office of the Register of Deeds, this _____ day of _____, 2004 at _____ o'clock _____ M; and is duly recorded.

_____, Register of Deeds
 Bill Meek
 _____, Deputy
 Linda Kizzire

NOTE:
 A master grading plan for drainage has been developed for this subdivision and is on file with the City of Wichita, Kansas. All drainage easements, right-of-ways, or reserves shall remain at established grades or as modified with the approval of the City Engineer of the City of Wichita, Kansas. No obstructions which impede the flow of this drainage system be allowed.