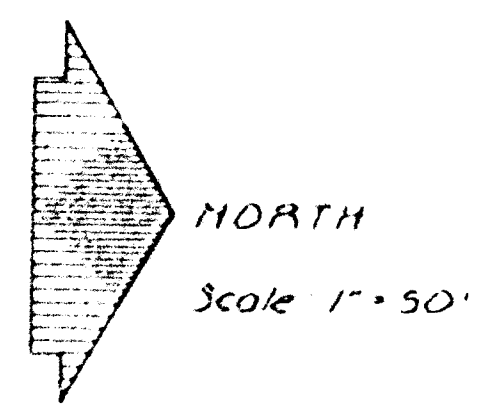
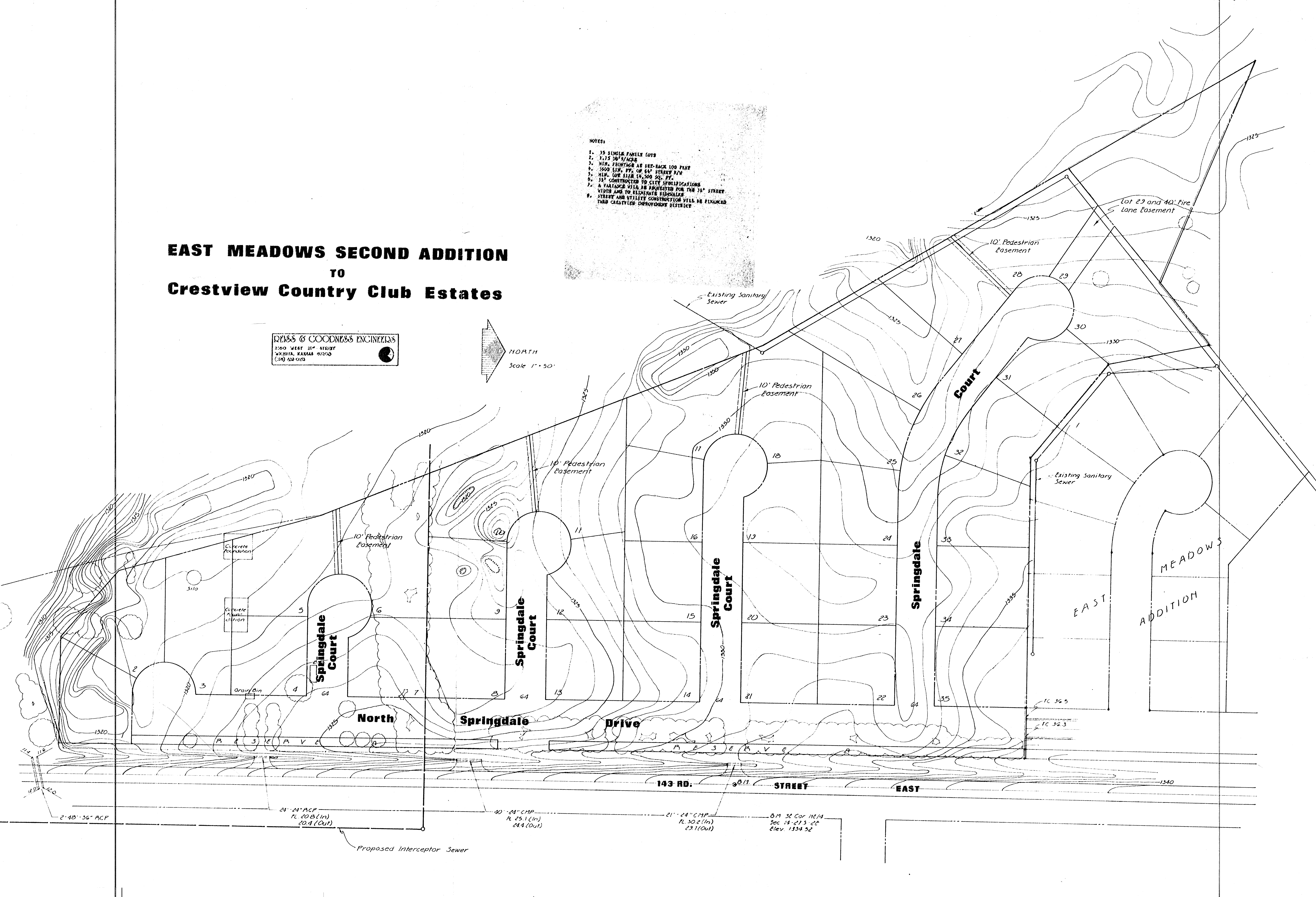


EAST MEADOWS SECOND ADDITION TO Crestview Country Club Estates

REISS & GOODNESS ENGINEERS
2500 WEST 31st STREET
WICHITA, KANSAS 67202
(316) 262-0223



- NOTES:
- 35 SINGLE FAMILY LOTS
 - 1.75 DWS/ACRE
 - MIN. FRONTAGE AS SHOWN 100 FEET
 - 3600 LIN. FT. OF 64" STAFF R/W
 - MIN. LOT SIZE 19,500 SQ. FT.
 - 15' CONSTRUCTION TO CITY SPECIFICATIONS
 - A FANTASIA WALK BE PROPOSED FOR THE 31st STREET VIEWS AND TO ELIMINATE SIDEWALKS
 - STREET AND UTILITY CONSTRUCTION WILL BE FINANCED THROUGH CRESTVIEW DEVELOPMENT DISTRICT



2'-40" 36" ACP
24" 24" CMP
R. 20.8 (In)
20.4 (Out)
Proposed Interceptor Sewer

40" 24" CMP
R. 25.1 (In)
24.4 (Out)

21" 24" CMP
R. 30.2 (In)
23.1 (Out)

0.71 36 Cor 116/11
Sec 14-275-22
Elev. 1334.32

TC 36.5
TC 36.3

EAST MEADOWS
ADDITION