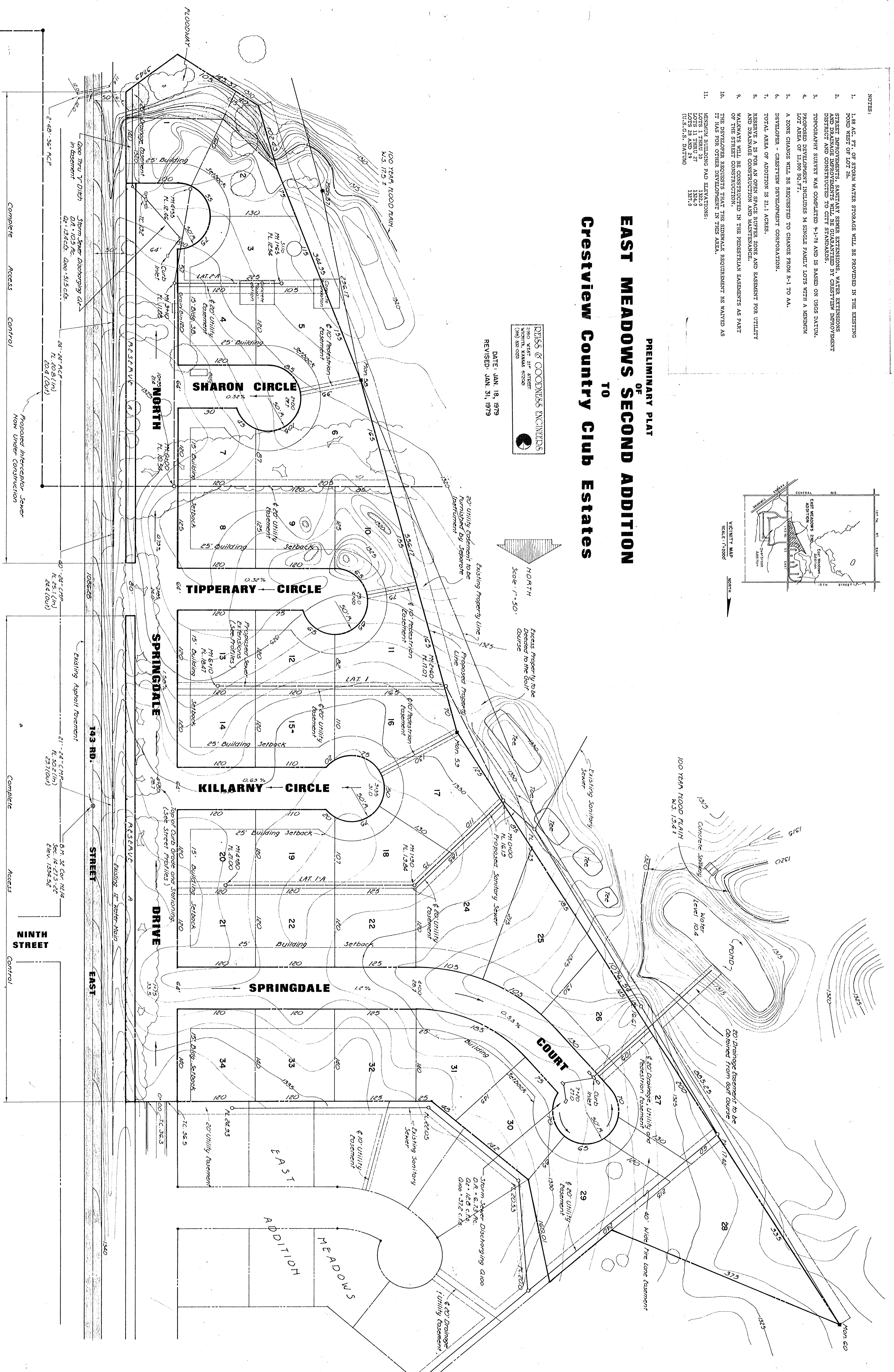
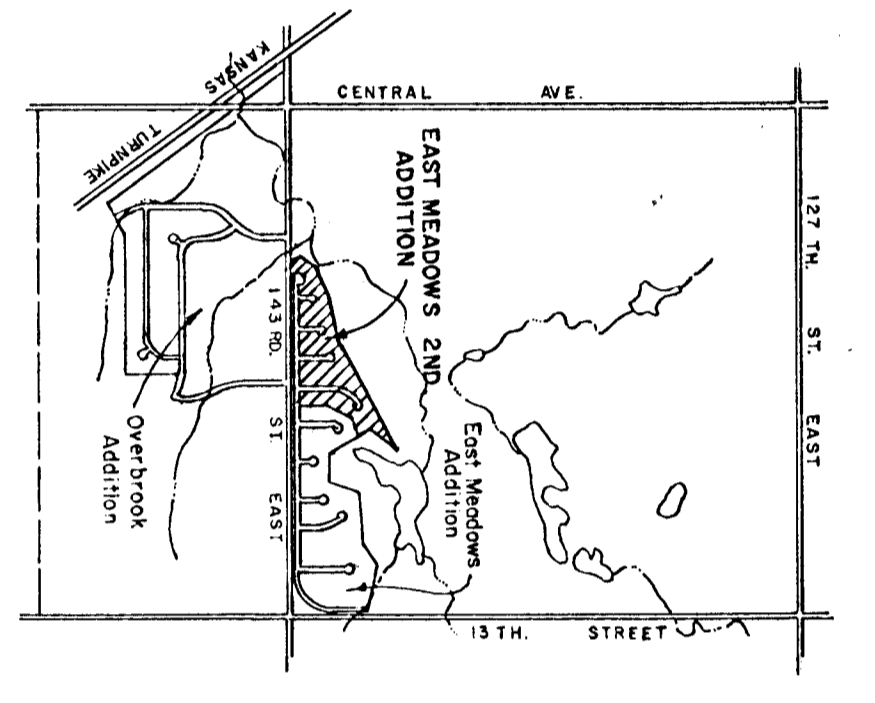
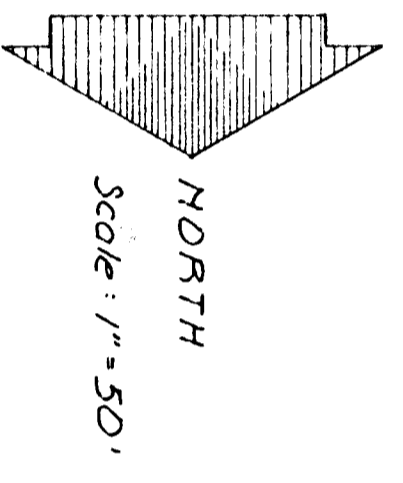


- NOTES:
1. 1.8 AC. FT. OF STORM WATER STORAGE WILL BE PROVIDED IN THE EXISTING POND WEST OF LOT 28.
 2. STREET IMPROVEMENTS, SANITARY SEWER EXTENSIONS, WATER EXTENSIONS AND UTILITY EXTENSIONS SHALL BE CONSTRUCTED TO CITY STANDARDS.
 3. TOPOGRAPHY SURVEY WAS COMPLETED 9-1-78 AND IS BASED ON USGS DATUM.
 4. PROPOSED DEVELOPMENT INCLUDES 34 SINGLE FAMILY LOTS WITH A MINIMUM LOT AREA OF 12,000 SQ. FT.
 5. A ZONE CHANGE WILL BE REQUESTED TO CHANGE FROM R-1 TO M-1.
 6. DEVELOPER - CRESTVIEW DEVELOPMENT CORPORATION.
 7. TOTAL AREA OF ADDITION IS 21.1 ACRES.
 8. RESERVE AS IS FOR AN OPEN SPACE BUFFER ZONE AND EASEMENT FOR UTILITY AND DRAINAGE CONSTRUCTION AND MAINTENANCE.
 9. WALKWAYS WILL BE CONSTRUCTED IN THE PERESTRAVA EASEMENTS AS PART OF THE STREET CONSTRUCTION.
 10. THE DEVELOPER REQUESTS THAT THE SIDEWALK REQUIREMENT BE WAIVED AS IT HAS FOR OTHER DEVELOPMENTS IN THE AREA.
 11. MINIMUM BUILDING PAD ELEVATIONS:
 LOTS 11 THRU 27 1334.0
 LOTS 28 THRU 34 1371.0
 (U.S. G.S. DATUM)

PRELIMINARY PLAT
 OF
EAST MEADOWS SECOND ADDITION
 TO
Crestview Country Club Estates

DESS & GOODNESS ENGINEERS
 2100 WEST 21ST STREET
 NORTH KANSAS CITY
 MO. 64111

DATE: JAN. 18, 1979
 REVISED: JAN. 31, 1979



Complete Access Control
 Proposed Interceptor Sewer
 Now Under Construction

Complete Access Control
 Existing Approval Easement
 14.3 RD.
 STREET
 EAST
 NINTH STREET
 Complete Access Control