

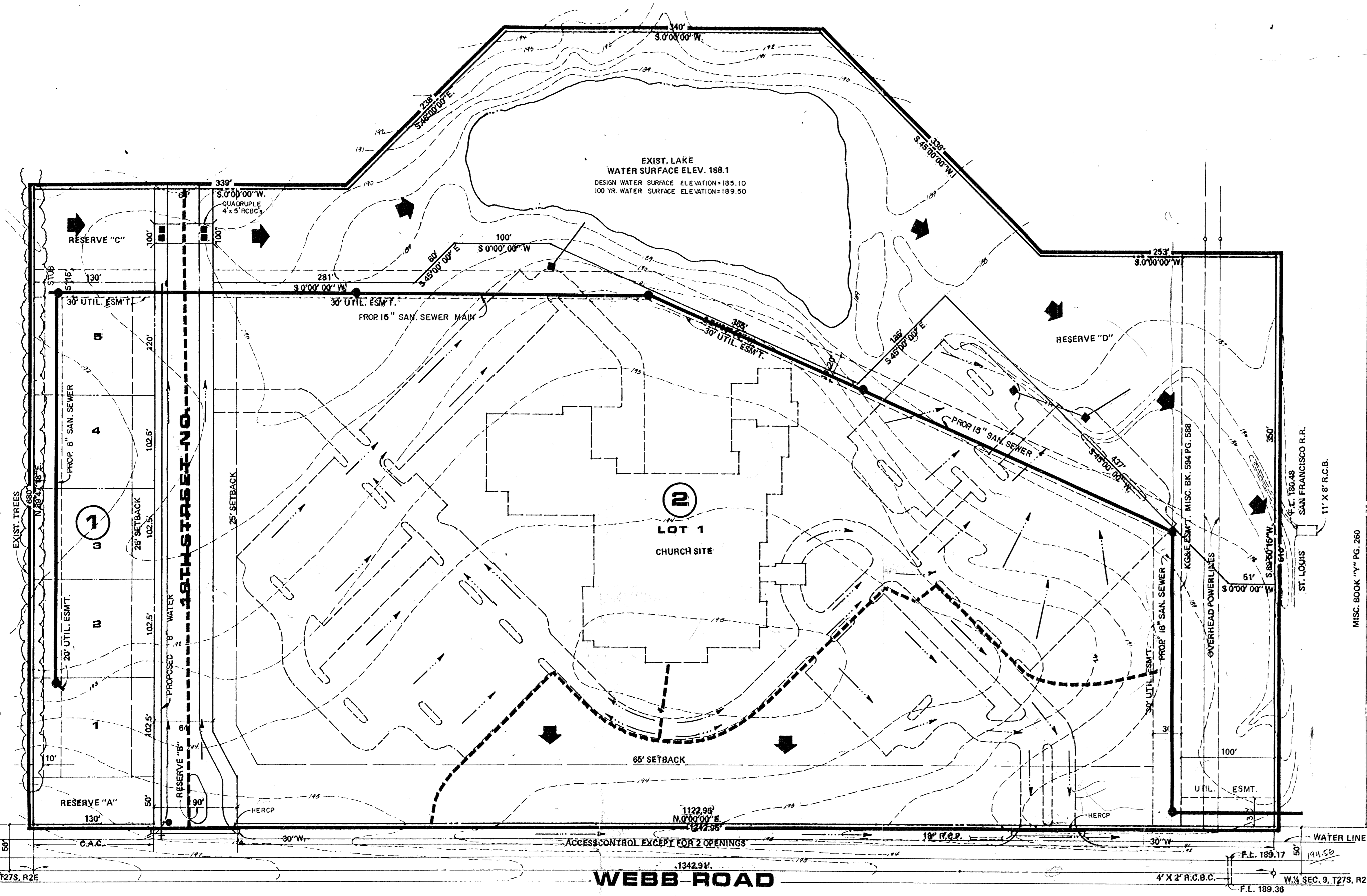
**BILL G. YUNG DESIGN**  
8225 E. 35TH, ST. NORTH, WICHITA, KS. 67226  
316-665-5667

**date** 12/26/85  
**rev.** JAN. 3, 1986

**sheet title**  
PRELIMINARY PLAN

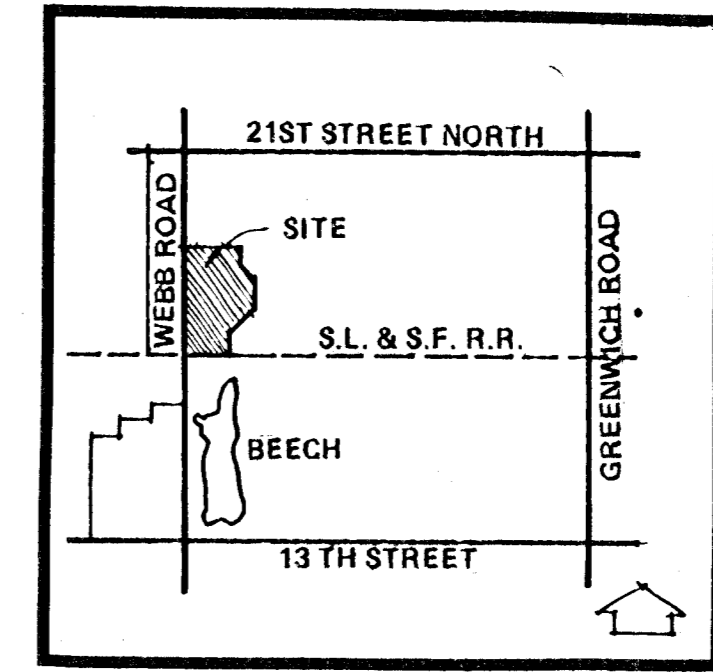
**project**  
EASTMINSTER

EASTMINSTER  
ZONED R-1



**NOTES**

TOPOGRAPHIC SURVEY PREPARED BY MOEHRING & ASSOC.  
SEPT. 17, 1985  
BENCH MARK: CITY STD. DISC. N.E. COR. R.C.B.C. 80' N. OF S.L. &  
S.F.R.R. NEAR THE W. 1/4 COR. OF SEC. 9. ELEV. 193.15. CITY DATUM  
RESERVES "A" & "B" ARE FOR UTILITIES, DRAINAGE, LANDSCAPING  
AND ENTRY MONUMENTS.  
RESERVE "C" & "D" FOR DRAINAGE, UTIL. AND LANDSCAPING  
GAS SERVICE "8" LINE DEAD ENDS 42' S. OF 21ST ST. NO. & 35' W.  
OF C/L OF WEBB ROAD.



**LOCATION MAP**

MISC. BOOK "Y" PG. 260  
BEECH AIRCRAFT CO. ZONED E

F.L. 189.17  
194.50  
F.L. 189.36

**DRAINAGE & UTILITY CONCEPT PLAN**

# EASTMINSTER

OWNER: EASTMINSTER UNITED PRESBYTERIAN CHURCH, 7202 E. 9TH, WICHITA, KANSAS



LOUISE W. BRADLEY ETAL. C/O WILSON ESTATES  
ZONED R-1

FRED HANLEY ZONED R-1

1314.91'  
N.W. COR. SEC. 9, T27S, R2E

1342.91'  
18' R.C.P.  
ACCESS CONTROL EXCEPT FOR 2 OPENINGS

4' X 2' R.C.B.C.  
W. 1/4 SEC. 9, T27S, R2E