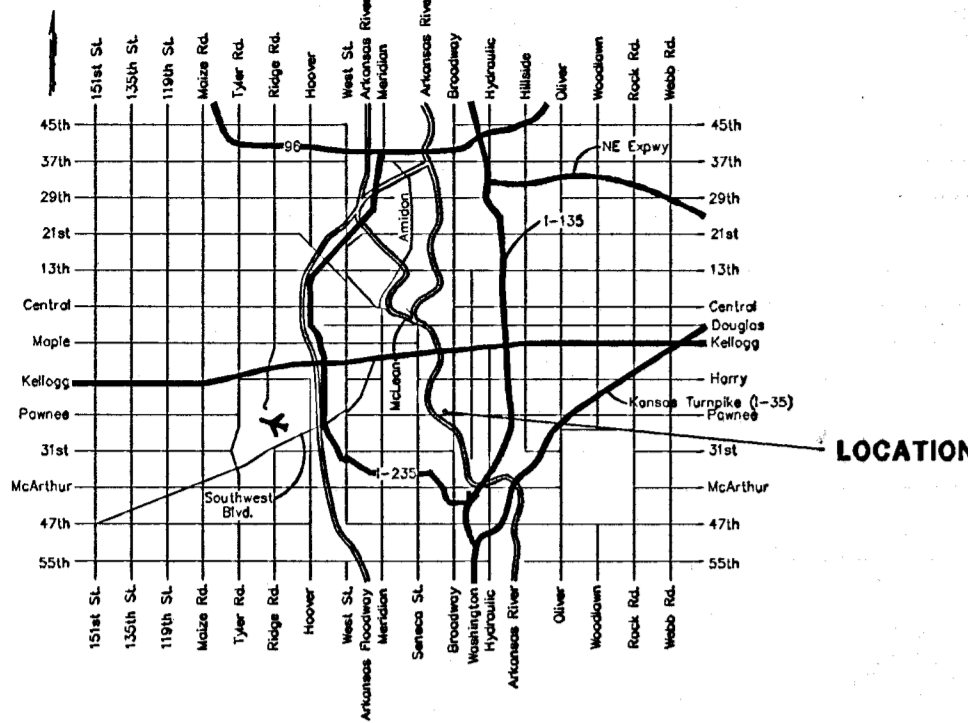


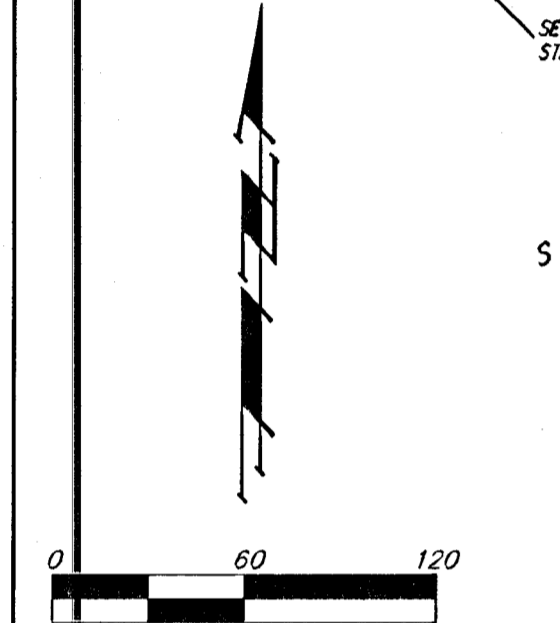
WICHITA VICINITY MAP



ONE-STEP FINAL
ENVISION ADDITION
WICHITA, SEDGWICK COUNTY, KANSAS

CONTRACT PURCHASER:
ENVISION INC., A KANSAS NOT FOR PROFIT CORPORATION
ATTN: LINDA K. MERRILL
808 E. LINCOLN
WICHITA, KS 67211
PH: (316) 267-2244

RECORDING:
COR. BRIDGEWALK NW CORNER BROADWAY
AND PARKING
ELEV. 28.39 CITY DATUM



NOTE: WATER LINE NOT FIELD VERIFIED.

NOTE:
ADDITIONAL BUILDING SETBACK REQUIREMENTS
FOR P.U.D. #4 ON FILE AT THE OFFICE OF
THE WICHITA-SEDGWICK COUNTY METROPOLITAN
AREA PLANNING DEPARTMENT.

- CB = Catch Basin
- EB = Electric Box
- FM = Fire Hydrant
- GM = Gas Meter
- GA = Gas Anchor
- LP = Light Pole
- PP = Power Pole
- SP = Sign
- SSMH = Sanitary Sewer Manhole
- SSWMH = Stormwater Sewer Manhole
- T = Tree
- WM = Wood
- WM = Water Meter

- (M) = MEASURED
- (D) = DESCRIBED
- (P) = PLATTED
- (C) = CALCULATED
- (C-P) = CALCULATED PER PLATTED INFO.
- (C-D) = CALCULATED PER DESCRIBED INFO.
- (C-D) = DEED DESCRIPTION
- NAL = NAIL FOUND
- #4 BAUGHMAN REBAR SET
- 3/4 IRON FOUND
- 1/2 IRON FOUND
- #4 REBAR FOUND
- TRUSSEL
- 1" IRON FOUND

SOUTH LINE, LOT 1,
GREENWAY 2ND ADD.
1.70(T)
1.40(W)

11.39(T) SOUTH OF THE
1/2" SE COR. LOT 1,
GREENWAY 2ND ADD.

ASPHALT
PARKING

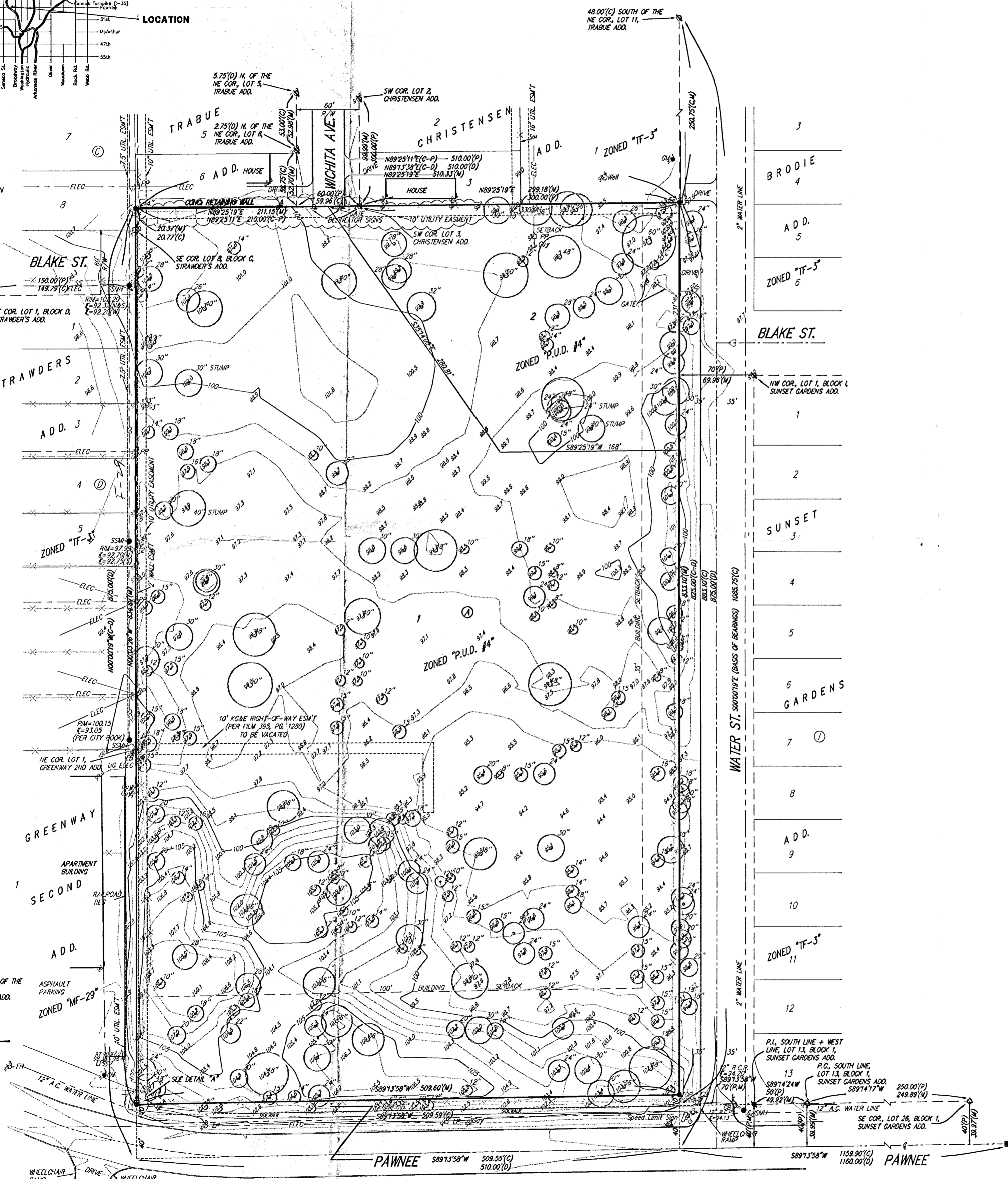
ZONED "MF-29"

12" A.C. WATER LINE

WHEELCHAIR
RAMP

WHEELCHAIR
RAMP

DETAIL "A"
NO SCALE



State of Kansas) SS We, Baughman Company, P.A., Surveyors in
Sedgwick County) do hereby certify that we have surveyed
and platted "ENVISION ADDITION", to Wichita, Sedgwick County,
Kansas and that the accompanying plat is a true and correct exhibit
of the property surveyed, described as a tract commencing 1160 feet
west of the Southeast corner of Section 32, Twp.-27-S, R-1-E, of
the Sixth Principal Meridian, Sedgwick County, Kansas, thence east
510 feet; thence north 875 feet; thence east 510 feet; thence south
875 feet to the place of beginning, except the south 40 feet thereof
for road.

Existing easements and dedications being vacated by virtue
of K.S.A. 12-512(b).

Baughman Company, P.A.

Michael G. Conrey
Surveyor

This plat of "ENVISION ADDITION",
to Wichita, Sedgwick County, Kansas has been submitted to and
approved by the Wichita-Sedgwick County Metropolitan Area Planning
Commission, Wichita, Kansas.
Dated this _____ day of _____, 1999.
Wichita-Sedgwick County Metropolitan Area Planning Commission

_____ Chairman
William M. Johnson

_____ Secretary
Marvin S. Krout

This plat approved and all dedications
shown hereon accepted by the City Council of the City of Wichita,
Kansas, this _____ day of _____, 1999.

_____ Mayor
Bob Knight

_____ City Clerk
Pat Burnett

Know all men by these presents that we,
the undersigned, have caused the land in the surveyors certificate to
be platted into Lots, a Block, and a Street, to be known as "ENVISION
ADDITION", Wichita, Sedgwick County, Kansas. The utility easements
are hereby granted as indicated for the construction and maintenance
of all public utilities. The wall easement is hereby granted for the
construction and maintenance of a private wall and utility main lines
and service lines shall be allowed to cross this easement. The streets
are hereby dedicated to and for the use of the public.

Envision, Inc., a Kansas not for profit corporation.

Linda K. Merrill
President and C.E.O.

Entered on transfer record this _____ day
of _____, 1999.

_____ County Clerk
James Alford

State of Kansas) SS The foregoing instrument acknowledged be-
fore me, this _____ day of _____, 1999, by Linda K. Merrill,
President and C.E.O. of Envision Inc., a Kansas not for profit corporation,
on behalf of the corporation.

My App't. Exp. _____

_____ Notary Public

State of Kansas) SS This is to certify that this plat has been
filed for record in the office of the Register of Deeds, this _____ day
of _____, 1999, at _____ o'clock _____ M.; and is duly recorded.

_____ Register of Deeds
Bill Meek

_____ Deputy
Linda Kizzire