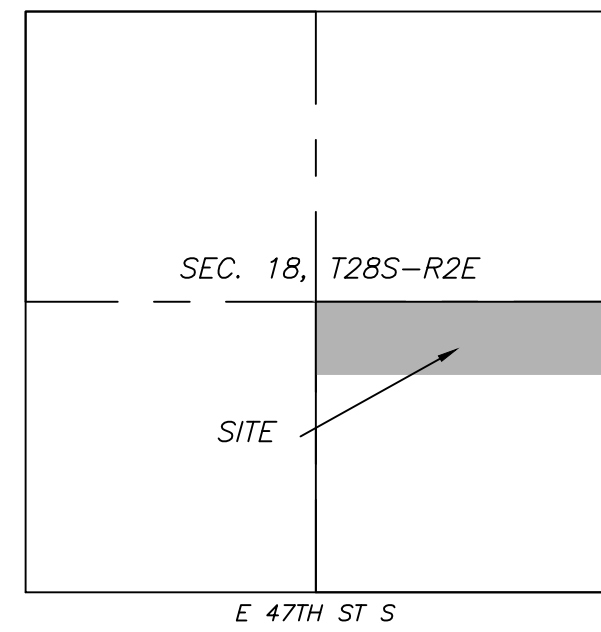


One-Step Final Plat Makers Park Addition a Replat of Glenville East Additon Sedgwick County, Kansas

Part of the SE 1/4, of Section 18, Township 28 South, Range 2 East of the 6th P.M.

VICINITY MAP



LEGEND

- (M) - Measured
- (P) - Platted
- (C) - Calculated
- (D) - Described
- C.A.C. - Complete Access Control
- - 5/8" Rebar w/ KEMPA Cap (Set)
- ⊕ - 5/8" Rebar w/ MKEC Cap (Found)
- ⊙ - 5/8" Rebar w/ Armstrong Cap (Found)
- ∅ - 3/4" Rebar (Found)

Benchmarks:
BM

BM1:
Top of Cap 3/4" Rebar, Section Corner,
NE Corner of the SE Quarter of Section 18,
Township 28S, Range 2E

Elevation = 1383.75 (NAVD88)

BM2:
Top of Magnetic Nail, edge of asphalt,
approximately 42ft east of SE Property
Corner.

Elevation = 1383.65 (NAVD88)

State of Kansas)
County of Sedgwick) SS

I, Keith Severns, a licensed land surveyor of the State of Kansas, do hereby certify that the following described tract of land was surveyed on the 28th day of January, 2025 and the accompanying one step plat prepared and that all the monuments shown herein actually exist and their positions are correctly shown to the best of my knowledge and belief:

LEGAL DESCRIPTION:

Lot 1, Block 1 Glenville East Addition to Sedgwick County, Kansas.

All easements and rights-of-way within said tract are hereby vacated by virtue of KSA 12-512b as amended.

Keith Severns, P.S. #1355 _____ Date

State of Kansas)
County of Sedgwick) SS

Know all men by these presents, that we, the undersigned, have caused the land described in the surveyor's certificate to be platted into Lots, a Block, and Streets to be known as Makers Park Addition, Sedgwick County, Kansas. Any street dedications shown are dedicated to the appropriate governing body. A master drainage plan has been developed for this plat. All drainage easements, rights-of-way, and reserves shall remain at established grades (unless modified for the approval of the applicable City or County Engineer) and shall be unobstructed to allow for the conveyance of stormwater in accordance with the Stormwater Manual. The access controls are hereby granted to the appropriate governing body as shown hereon. The land contained herein is held and shall be conveyed subject to any applicable restrictions, reservations and covenants now on file or hereafter filed in the Office of the Register of Deeds of Sedgwick County, Kansas.

By: _____ Date
Brock Beran, Managing Member
Makers Park LLC

State of Kansas)
County of Sedgwick) SS

This instrument was acknowledged before me on this _____ day _____ of 2025, by Brock Beran, Managing Member, Makers Park LLC.

_____, Notary Public

My commission expires: _____

State of Kansas)
City of Wichita) SS

This plat of Makers Park, Sedgwick County, Kansas, has been submitted to and approved by the Wichita-Sedgwick County Metropolitan Area Planning Commission, Wichita, Kansas. Dated this _____ day of _____, 2025.

_____, Chair
Bryan K. Frye
_____, Secretary
Scott A. Wadle

State of Kansas)
County of Sedgwick) SS

This plat of Makers Park Addition, Sedgwick County, Kansas has been submitted to and approved by the Board of County Commissioners of Sedgwick County, Kansas. On this _____ day of _____, 2025.

Ryan Baty, Fourth District, Chairman

Attest: Kelly B. Arnold, County Clerk

Entered on transfer record this _____ day of _____, 2025.

Kelly B. Arnold, County Clerk

State of Kansas)
County of Sedgwick) SS

This is to certify that this instrument was filed for record in the Register of Deeds Office, at _____ on the _____ day of _____, 2025, and is duly recorded.

_____, Register of Deeds
Tonya Buckingham
_____, Deputy
Kenly Zehring

Reviewed in accordance with K.S.A. 58-2005 on this _____ day of _____, 2025.



HORIZONTAL SCALE
(IN FEET)
1 inch = 100 ft.

3/22/24 | Makers Park Addition Prepared: 01/31/2025

KEMILLER
ENGINEERING PA
117 E. Lewis, Wichita, KS 67202 (316)264-0242

