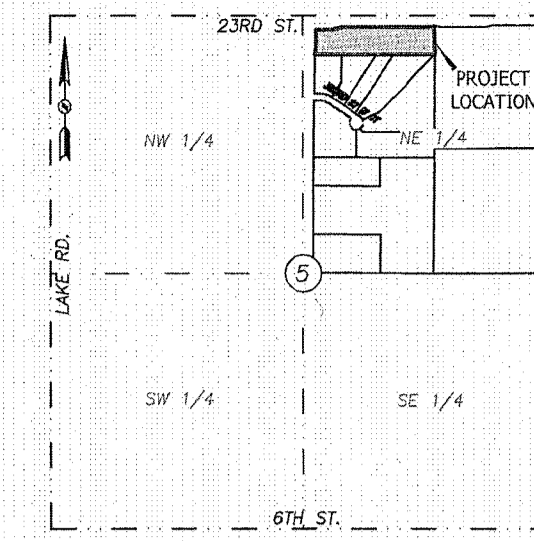
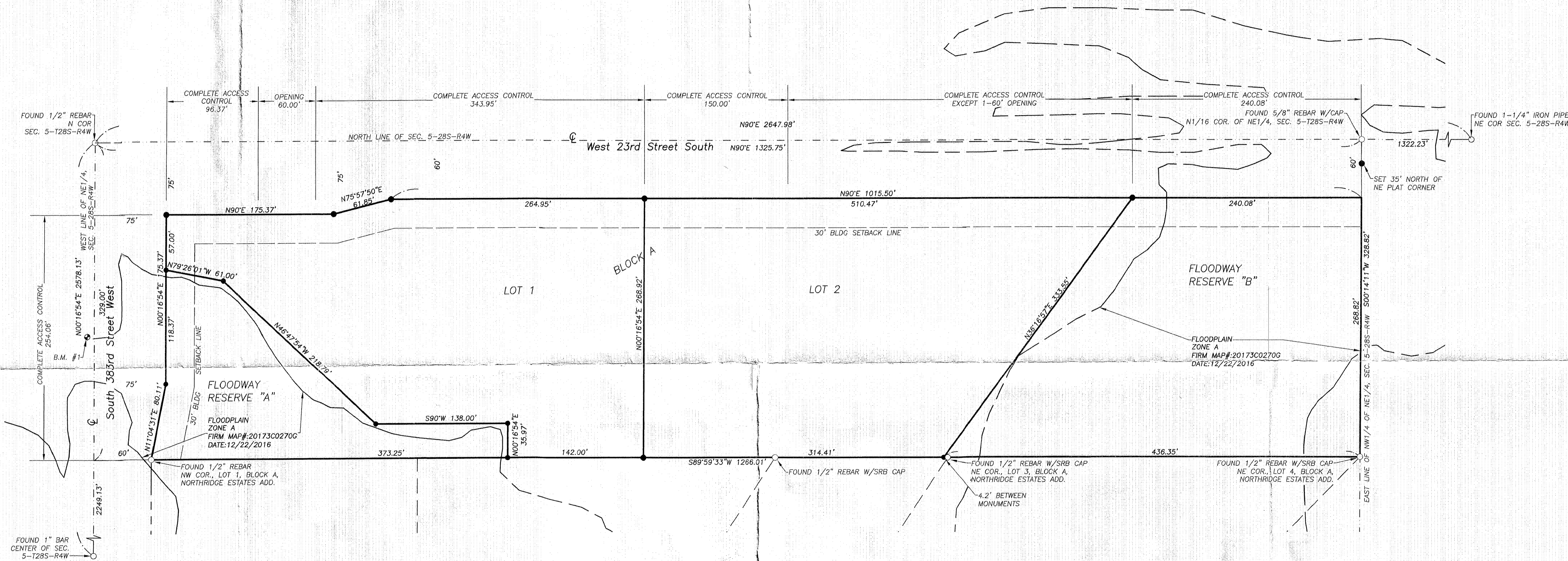
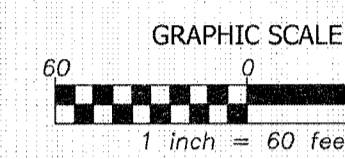


FINAL PLAT SCHEER ESTATES

SEDGWICK COUNTY, KANSAS



SECTION MAP
SECTION 5-T285-R4W
(NOT TO SCALE)



- LEGEND**
- Set Survey Monument (1/2" Reinforcing Rod w/cap: KS CLS 175) unless otherwise noted
 - Found Survey Monument
 - ⊙ Benchmark
 - ⊙ Not To Scale
 - R/W Right-of-Way

BENCHMARKS (NAVD88 Datum)
 BM#1 Square Cut on the Northwest Corner of Bridge Deck Located on 383rd St, 66.9' West and 128.6' N of the Southwest Corner of (Proposed) Scheer Estates Addition
 Elevation: 1367.82

MINIMUM BUILDING PAD ELEVATION FOR LOWEST OPENING INTO STRUCTURES		
LOT NUMBER	BASE FLOOD ELEVATION (BFE)	MINIMUM PAD ELEVATION (NAVD88)
1	1366.0	1368.0
2	1358.6	1362.0

SCHEER ESTATES
 Project No. 046310.00.01

BHC
 CIVIL ENGINEERING / SURVEYING / UTILITIES
 165 S. Rock Island, Suite 150, Wichita, KS 67202
 Phone: (316) 265-0005
BHC is a trademark of Brungardt, Rozanski & Company, P.A.