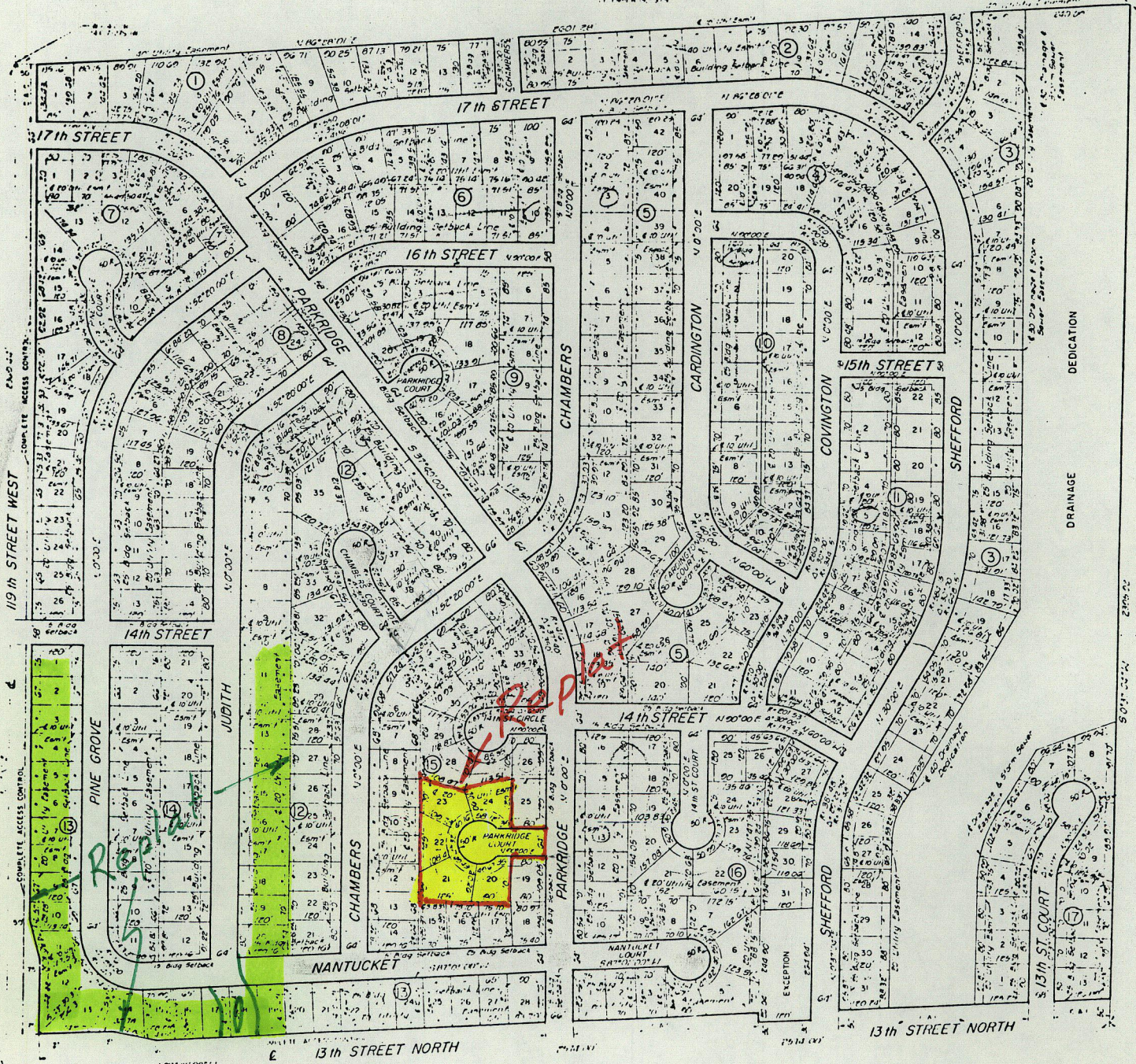


ECHO HILLS

AN ADDITION TO WICHITA SEDGWICK COUNTY, KANSAS

S.M. City Standard Block Case in
 Comm. on Nov. 14, 1937 East
 of 15th Street, Sec. 7,
 T.27S., R.14W.
 Elev. 1945.33

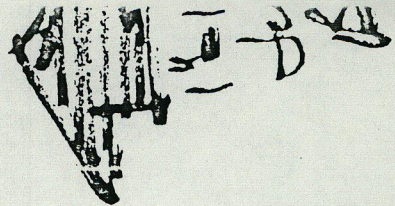


374 City Map
 1937, 1940, 1941
 G.M. PM

Designs

A.H.

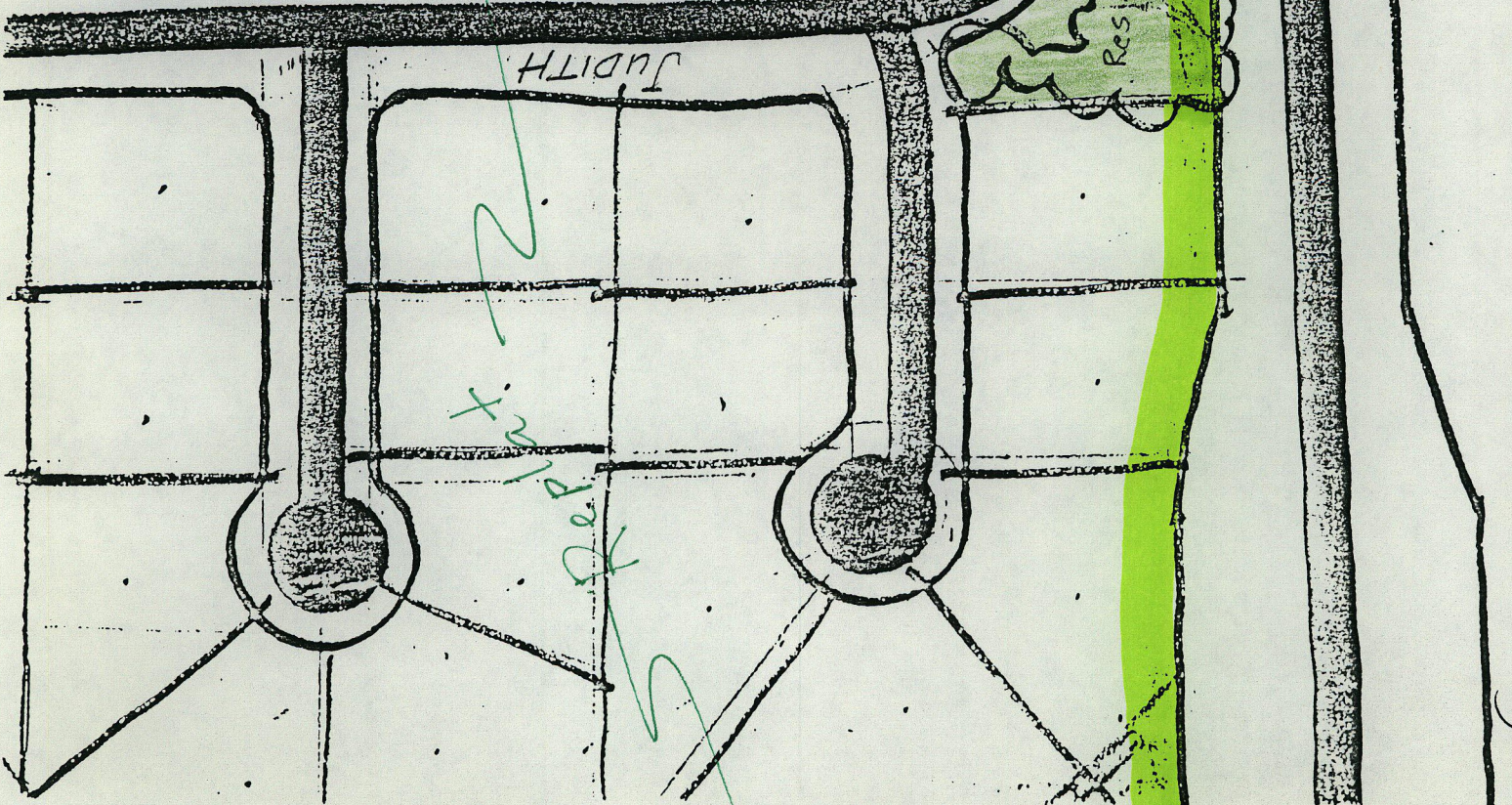
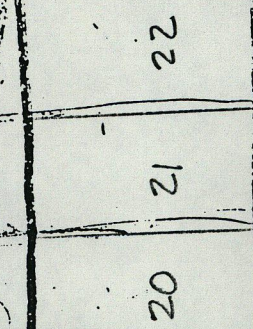
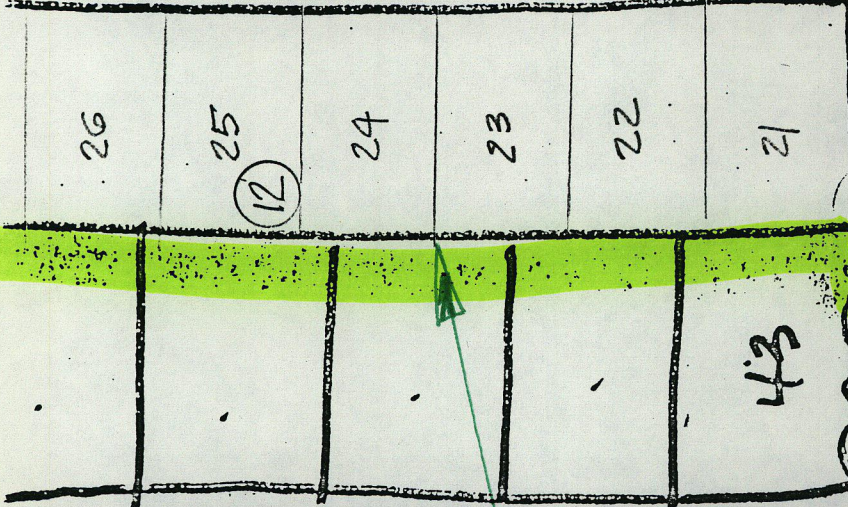
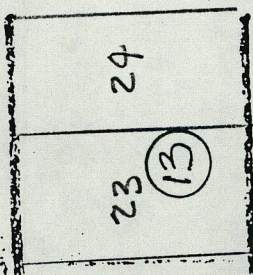
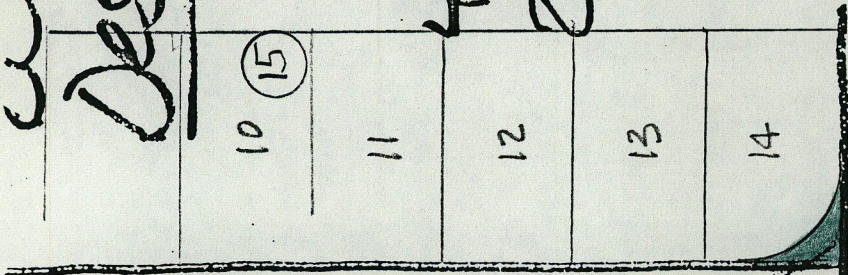
43 lots.
2850' 5"



CHAMBERS

NANTUCKET

13th St



Redupl. x 2

43

Res.

Res.