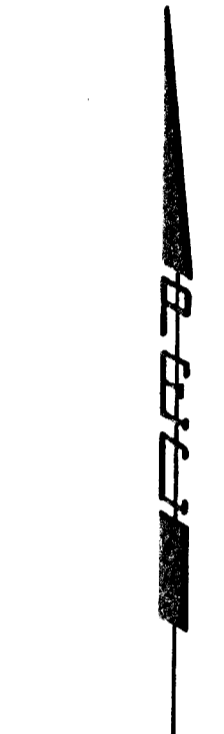
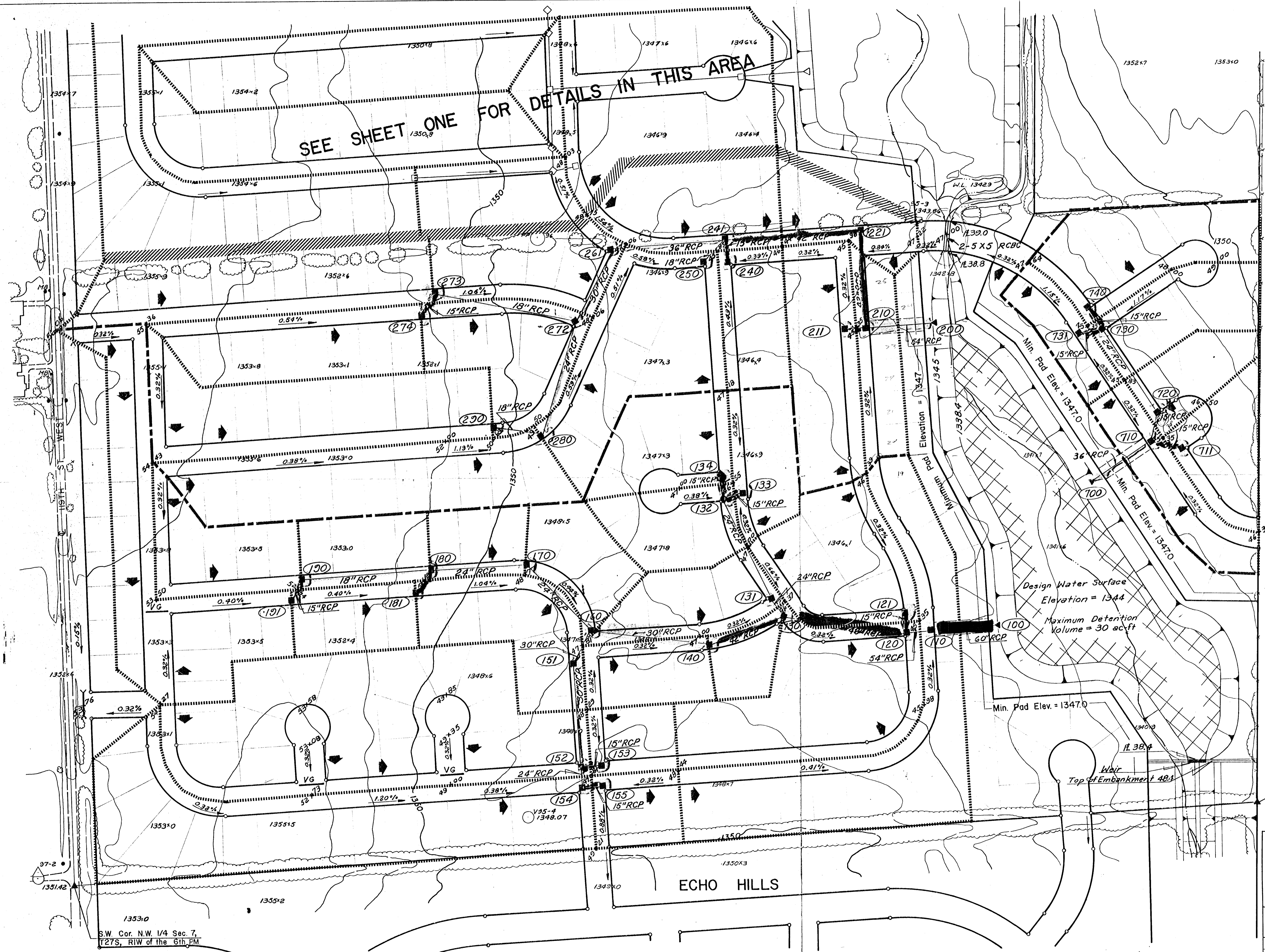


SEE SHEET ONE FOR DETAILS IN THIS AREA



SCALE: 1" = 100'

LEGEND

- INLET LOCATION
- ◄ OUTLET LOCATION
- (121) NODE IDENTIFICATION NO.
- 0.32% STREET GRADE
- ▶ 100 YEAR FLOOD ROUTING
- 45+35 TOP OF CURB ELEVATION
- LIMITS OF 2-YEAR SUBBASIN
- LIMITS OF 100-YEAR DRAINAGE BASIN
- /// DRAINAGE DIVIDE BETWEEN PONDS
- ▬ DROP STRUCTURE REQUIRED

Design Water Surface
Elevation = 1344

Maximum Detention
Volume = 30 ac-ft

Min. Pad Elev. = 13470

Whir
Top of Embankment 48.4

SE. Cor. N.W. 1/4 Sec. 7,
T27S, R1W of the 6th PM.

**ECHO HILLS 2ND ADDITION
DRAINAGE PLAN**

PROFESSIONAL ENGINEERING CONSULTANTS, P.A.
ENGINEERS
WICHITA, KANSAS

Designed by	KJH	Checked by	CMB	SH 2 of 2
Drawn by	HBK	Date	7/3/1980	Job No. 30-7528-112C

1353:0
S.W. Cor. N.W. 1/4 Sec. 7,
T27S, R1W of the 6th PM.

ECHO HILLS