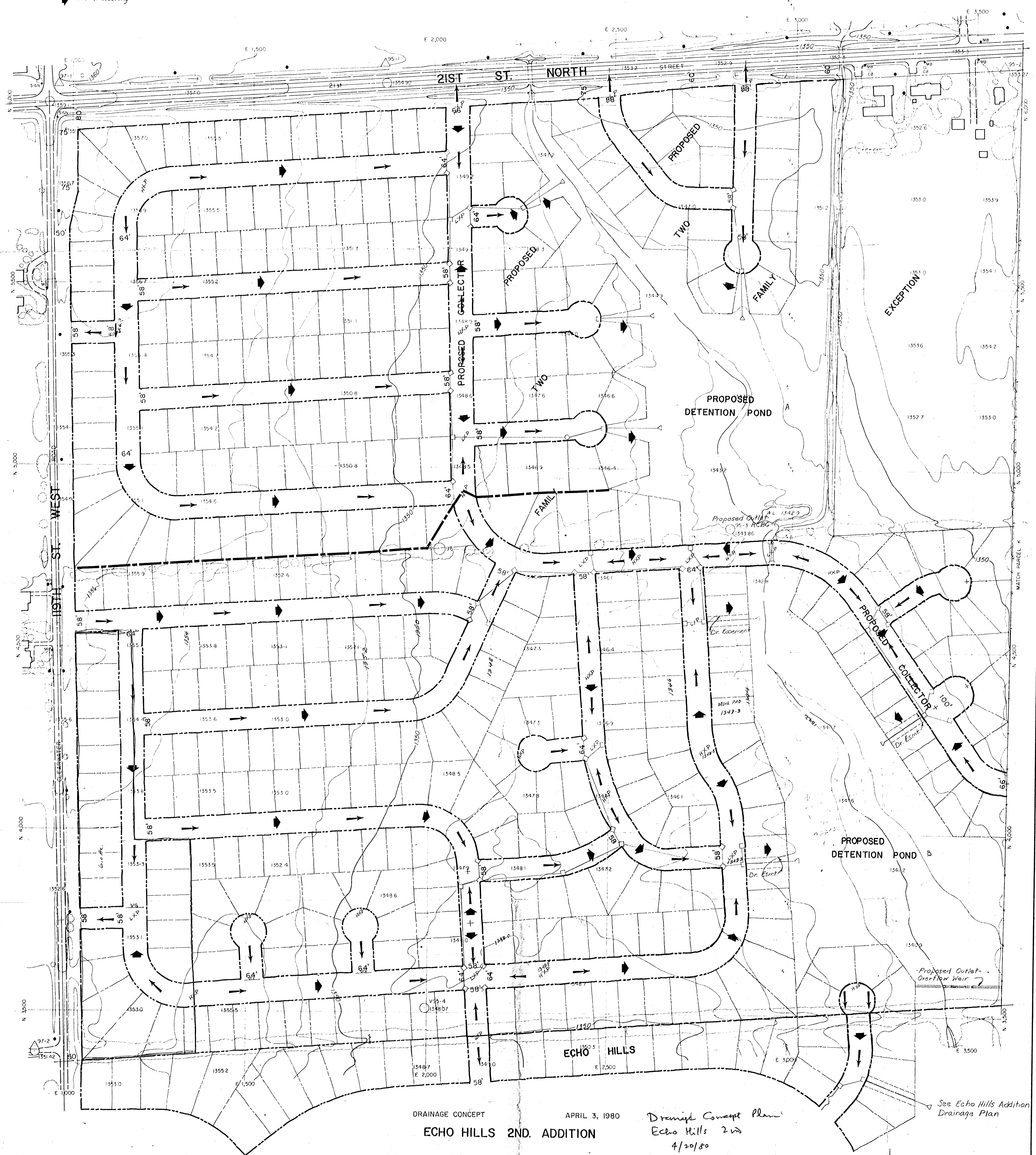


KEY
 High Point
 Low Point
 Inlet Location
 Outlet Location
 Man Hole Location
 Dr. near Top of Street Grade
 100-Yr. Routing



DRAINAGE CONCEPT
 APRIL 3, 1980
 ECHO HILLS 2ND. ADDITION

*Drainage Concept Plan
 Echo Hills 2nd
 4/20/80*

TOPOGRAPHIC MAP OF LANDS LOCATED
 IN THE N.W. 1/4 OF SEC. 7
 T. 27 S. R. 1 W., SEDGWICK COUNTY, KANSAS

SCALE 1"=100'
 100 200 300 400
 CONTOUR INTERVAL 2'
 PHOTOGRAPHY DATE SEPT. 8, 1979

SHEET INDEX

H	K	L
---	---	---

PREPARED BY
 MILES AIR PHOTO SURVEY
 PHOTOGRAMMETRIC SERVICES
 DOWNEY, KANSAS 66209
 19781 882-3550 FILE NO. M-13-44

PREPARED FOR
 ALLIED LABORATORIES -

See Echo Hills Addition
 Drainage Plan