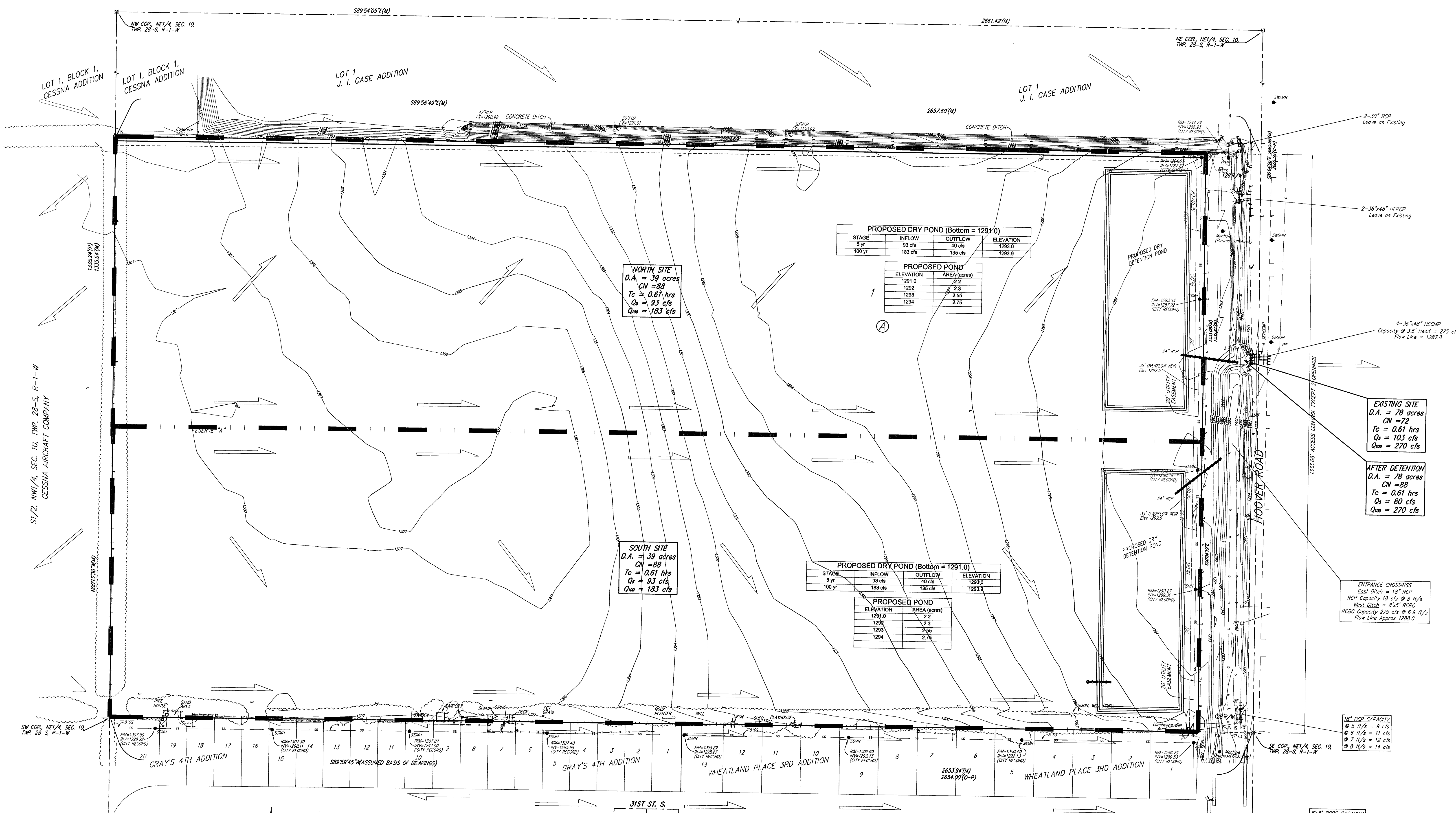


DRAINAGE PLAN

ECCO INDUSTRIAL 2ND ADDITION

WICHITA, SEDGWICK COUNTY, KANSAS



PROPOSED DRY POND (Bottom = 1291.0)

STAGE	INFLOW	OUTFLOW	ELEVATION
5 yr	93 cfs	40 cfs	1293.0
100 yr	183 cfs	135 cfs	1293.9

PROPOSED POND

ELEVATION	AREA (acres)
1291.0	2.2
1292	2.3
1293	2.55
1294	2.75

NORTH SITE
 D.A. = 39 acres
 CN = 88
 Tc = 0.61 hrs
 Qs = 93 cfs
 Qmax = 183 cfs

SOUTH SITE
 D.A. = 39 acres
 CN = 88
 Tc = 0.61 hrs
 Qs = 93 cfs
 Qmax = 183 cfs

PROPOSED DRY POND (Bottom = 1291.0)

STAGE	INFLOW	OUTFLOW	ELEVATION
5 yr	93 cfs	40 cfs	1293.0
100 yr	183 cfs	135 cfs	1293.9

PROPOSED POND

ELEVATION	AREA (acres)
1291.0	2.2
1292	2.3
1293	2.55
1294	2.75

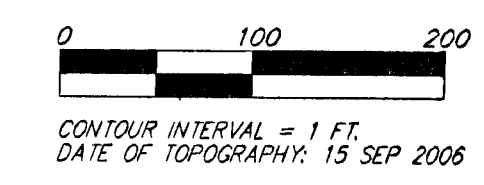
EXISTING SITE
 D.A. = 78 acres
 CN = 72
 Tc = 0.61 hrs
 Qs = 103 cfs
 Qmax = 270 cfs

AFTER DETENTION
 D.A. = 78 acres
 CN = 88
 Tc = 0.61 hrs
 Qs = 80 cfs
 Qmax = 270 cfs

ENTRANCE CROSSINGS
 East Ditch = 18" RCP
 RCP Capacity 18 cfs @ 8 ft/s
 West Ditch = 8" RCB
 RCB Capacity 275 cfs @ 6.9 ft/s
 Flow Line Approx 1288.0

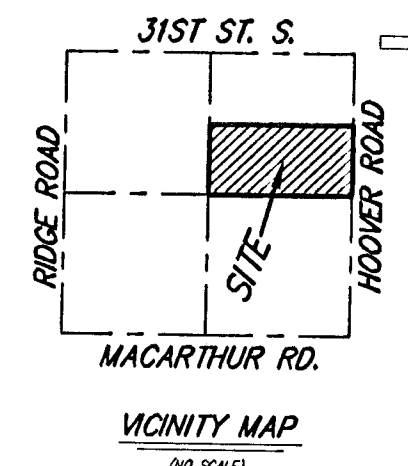
18" RCP CAPACITY
 @ 5 ft/s = 9 cfs
 @ 6 ft/s = 11 cfs
 @ 7 ft/s = 12 cfs
 @ 8 ft/s = 14 cfs

8" RCB CAPACITY
 Full Flow = 250 cfs



- = #4 REBAR W/ "BAUGHMAN" CAP (SET)
- = 1/2" IRON (FOUND)
- = 1" IRON (FOUND)
- = 3/4" IRON (FOUND)

BENCHMARK:
 HOOPER ROAD AND 35TH STREET
 SOUTH - CITY OF WICHITA
 BENCHMARK DISC
 NE CORNER OF DECK ON R.C.B.C. ON
 35TH ST. S., 100.00 FEET WEST OF
 HOOPER RD.
 ELEV. = 1291.24 NGVD29



OWNER:
 ECCO DEVELOPMENT CORP.
 ATTN: DON HAYES
 P.O. BOX 1594
 WICHITA, KS 67201-1594
 PH (316) 721-3259

LEGAL DESCRIPTION:
 A REPLAT OF ALL OF LOTS 1, 2, 3, 4, 5, 6, 7, 8,
 9, 10, 11, 12, 13, 14, 15, AND 16, BLOCK 1,
 TOGETHER WITH ALL OF LOTS 1, 2, 3, 4, 5, 6, 7, &
 8, 10, 11, AND 12, BLOCK 2, TOGETHER WITH ALL
 OF RESERVE "A", TOGETHER WITH ALL OF
 ST. CALVERT ST. AND 34TH ST. S., ALL AS
 PLATTED AND DEDICATED IN ECCO INDUSTRIAL
 ADDITION, SEDGWICK COUNTY, KANSAS

NOTE: There is no mapped FEMA Floodplain or
 Floodway boundaries on the subject property as
 of September 29, 2006.

REVISED DECEMBER 07 2006
3 OCTOBER 2006

Baughman Company, P.A.
 315 Ella St., Wichita, KS 67211 P 316-262-3231 F 316-262-0149
 ENGINEERING | SURVEYING | PLANNING | LANDSCAPE ARCHITECTURE
 F:\HYDRO\Projects\EccoIndustrialPark2nd\ECCO2P_drain.dwg