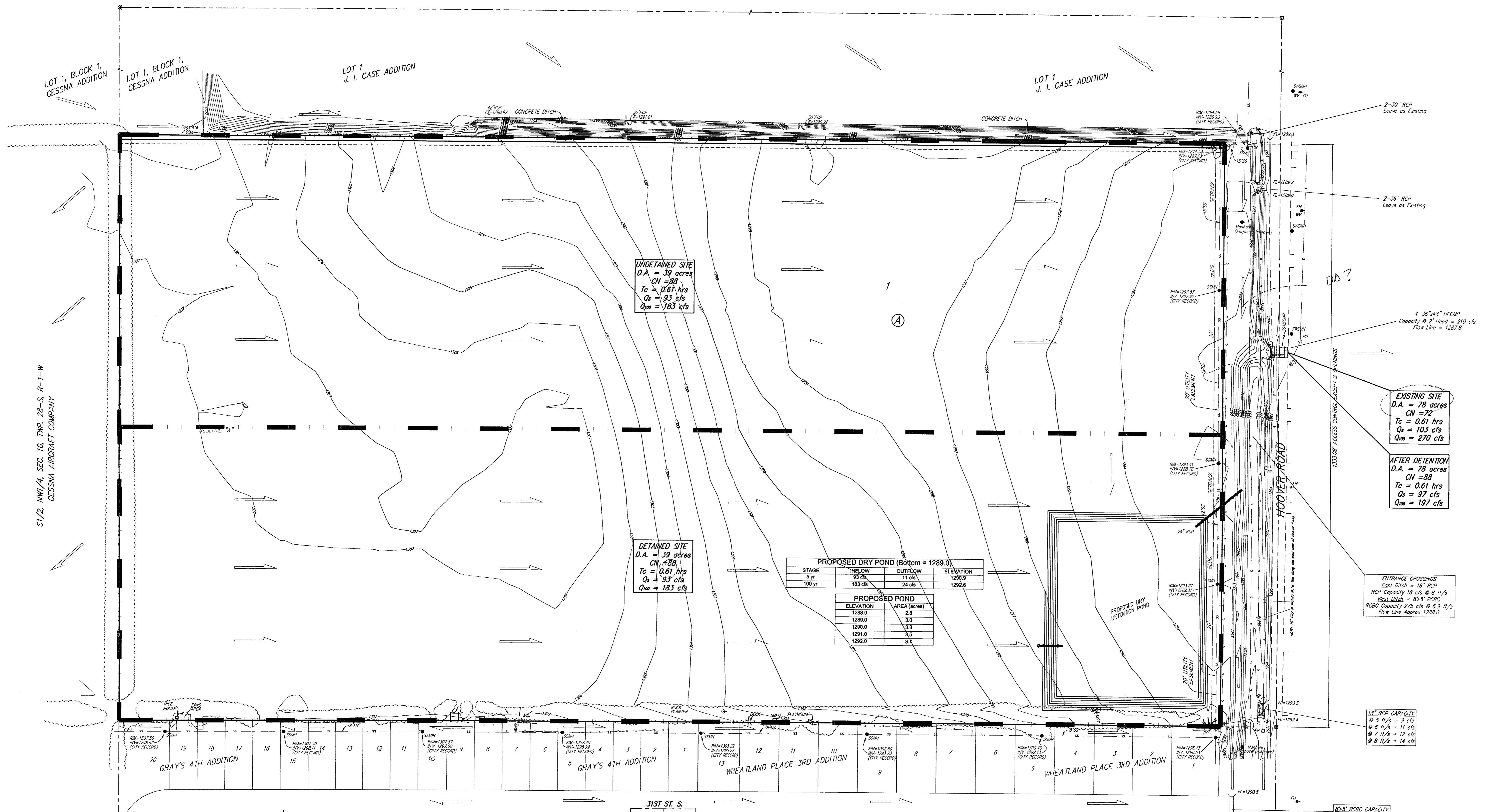


DRAINAGE PLAN

ECCO INDUSTRIAL 2ND ADDITION

WICHITA, SEDGWICK COUNTY, KANSAS



UNDRAINED SITE
 D.A. = 39 acres
 CN = 88
 Tc = 0.61 hrs
 Qs = 93 cfs
 Q100 = 183 cfs

DETAINED SITE
 D.A. = 39 acres
 CN = 88
 Tc = 0.61 hrs
 Qs = 93 cfs
 Q100 = 183 cfs

PROPOSED DRY POND (Bottom = 1289.0)

STAGE	INFLOW	OUTFLOW	ELEVATION
5 yr	93 cfs	11 cfs	1290.9
100 yr	183 cfs	24 cfs	1292.6

PROPOSED POND

ELEVATION	AREA (acres)
1288.0	2.8
1289.0	3.0
1290.0	3.3
1291.0	3.5
1292.0	3.7

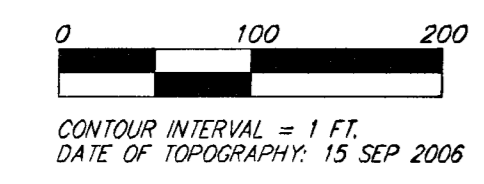
EXISTING SITE
 D.A. = 78 acres
 CN = 72
 Tc = 0.61 hrs
 Qs = 103 cfs
 Q100 = 270 cfs

AFTER DETENTION
 D.A. = 78 acres
 CN = 88
 Tc = 0.61 hrs
 Qs = 97 cfs
 Q100 = 197 cfs

ENTRANCE CROSSINGS
 East Ditch = 18" RCP
 RCP Capacity 18 cfs @ 8 1/2" H₂O
 West Ditch = 8" S" RCBC
 RCBC Capacity 215 cfs @ 6.9 1/2" H₂O
 Flow Line Approx 1288.0

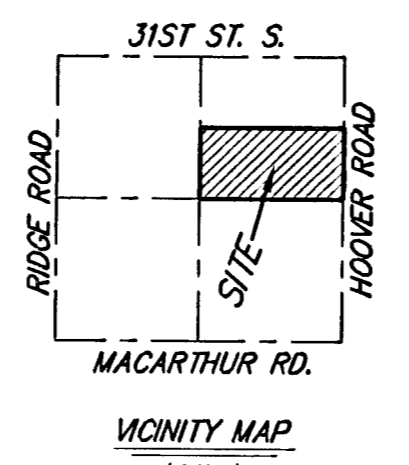
18" RCP CAPACITY
 @ 5 1/2" = 9 cfs
 @ 6 1/2" = 11 cfs
 @ 7 1/2" = 12 cfs
 @ 8 1/2" = 14 cfs

8" S" RCBC CAPACITY
 Full Flow = 250 cfs



- = #4 REBAR W/ "BAUGHMAN" CAP (SET)
- = 1/2" IRON (FOUND)
- = 1" IRON (FOUND)
- ⊗ = 3/4" IRON (FOUND)

BENCHMARK:
 HOOVER ROAD AND 35TH STREET
 SOUTH - CITY OF WICHITA
BENCHMARK DISC:
 NE CORNER OF DECK ON R.C.B.C. ON
 35TH ST. S., 100.00 FEET WEST OF
 HOOVER RD.
 ELEV. = 1297.24 NGVD29



OWNER:
 ECCO DEVELOPMENT CORP.
 ATTN: DON HAYES
 P.O. BOX 1594
 WICHITA, KS 67201-1594
 PH (316) 721-3259

LEGAL DESCRIPTION:
 A REPLAT OF ALL OF LOTS 1, 2, 3, 4, 5, 6, 7, 8,
 9, 10, 11, 12, 13, 14, 15, AND 16, BLOCK 1,
 TOGETHER WITH ALL OF LOTS 1, 2, 3, 4, 5, 6, 7, 8,
 9, 10, 11, AND 12, BLOCK 2, TOGETHER WITH ALL
 OF "RESERVE" "A", TOGETHER WITH ALL OF "RESERVE"
 "A", CALVERT ST., AND 34TH ST. SO., ALL AS
 PLATED AND DEDICATED IN ECCO INDUSTRIAL
 ADDITION, SEDGWICK COUNTY, KANSAS

NOTE: There is no mapped FEMA Floodplain or
 Floodway boundaries on the subject property as
 of September 29, 2006.

3 OCTOBER 2006

Baughman Company, P.A.
 315 Ellis St. Wichita, KS 67211 P 316-262-7211 F 316-262-0149
 ENGINEERING | SURVEYING | PLANNING | LANDSCAPE ARCHITECTURE
 FAHYDRO\Projects\EccoIndustrialPark2nd\ECCO2P_drain.dwg