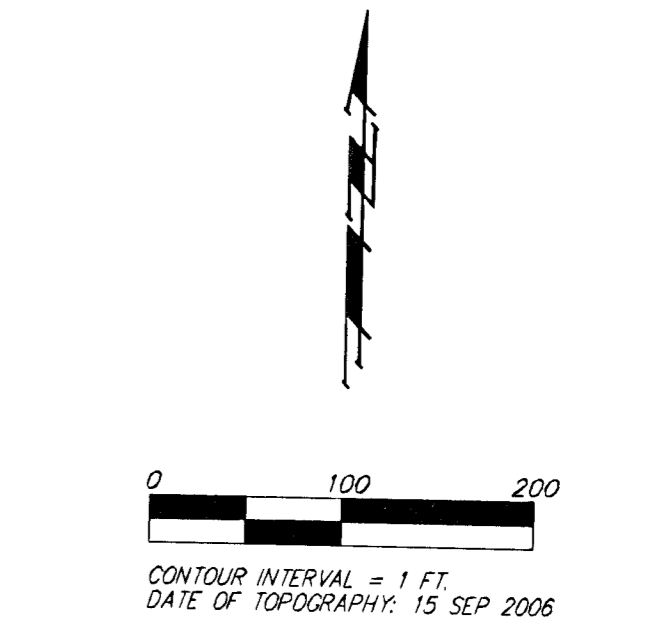
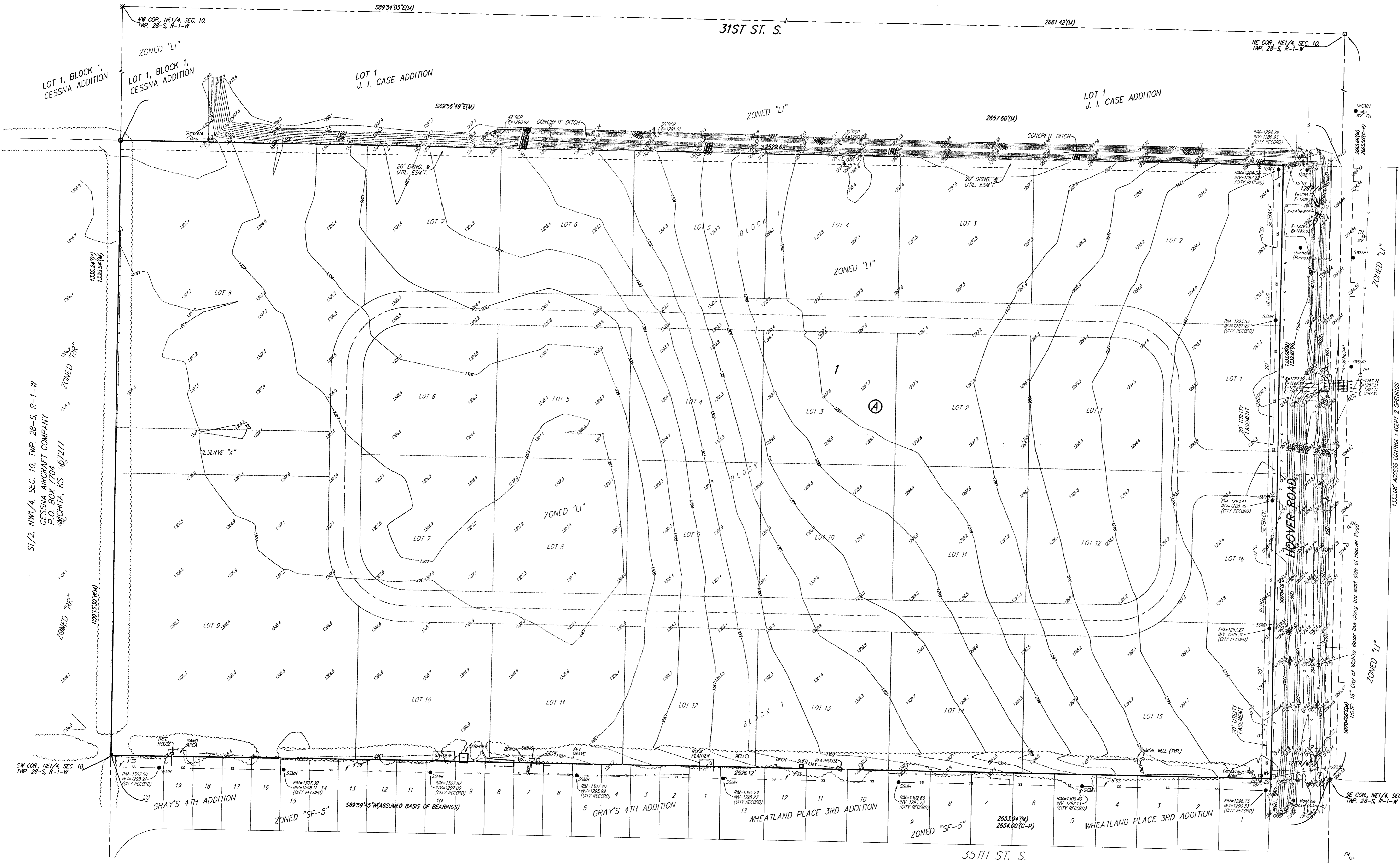


ONE-STEP FINAL PLAT  
**ECCO INDUSTRIAL 2ND ADDITION**  
 WICHITA, SEDGWICK COUNTY, KANSAS

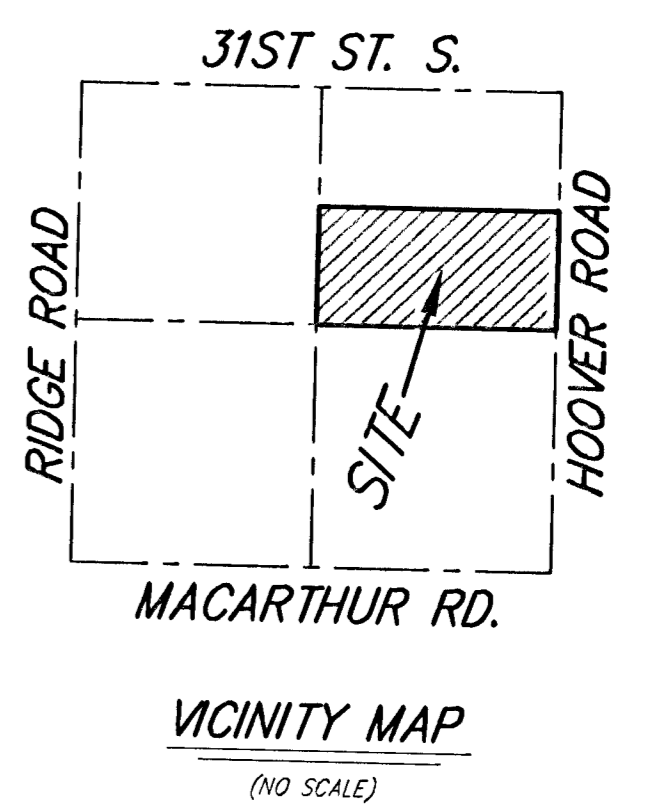


- = #4 REBAR W/ "BAUGHMAN" CAP (SET)
  - = 1/2" IRON (FOUND)
  - = 1" IRON (FOUND)
  - = 3/4" IRON (FOUND)
- (M) = MEASURED  
 (P) = PLATTED  
 (C-P) = CALCULATED PER PLATTED INFO.

OWNER:  
 ECCO DEVELOPMENT CORP.  
 ATTN: DON HAYES  
 P.O. BOX 1594  
 WICHITA, KS 67201-1594  
 PH (316) 721-3259

LEGAL DESCRIPTION:  
 A REPLAT OF ALL OF LOTS 1, 2, 3, 4, 5, 6, 7, 8, 9, 10, 11, 12, 13, 14, 15, AND 16, BLOCK 1, TOGETHER WITH ALL OF LOTS 1, 2, 3, 4, 5, 6, 7, 8, 9, 10, 11, AND 12, BLOCK 2, TOGETHER WITH ALL OF RESERVE "A", TOGETHER WITH ALL OF WEBSTER ST., CALVERT ST., AND 34TH ST. SO., ALL AS PLATTED AND DEDICATED IN ECCO INDUSTRIAL ADDITION, SEDGWICK COUNTY, KANSAS.

BENCHMARK:  
 HOOVER ROAD AND 35TH STREET SOUTH - CITY OF WICHITA.  
 BENCHMARK DISC.  
 NE CORNER OF DECK ON R.C.B.C. ON 35TH ST. S., 100.00 FEET WEST OF HOOVER RD.  
 ELEV. = 1297.24 NGVD29



S1/2 NW1/4, SEC. 10, TWP. 28-S, R-1-W  
 CESSNA AIRCRAFT COMPANY  
 P.O. BOX 1704  
 WICHITA, KS 67217

SW COR. NE1/4, SEC. 10, TWP. 28-S, R-1-W  
 GRAY'S 4TH ADDITION  
 ZONED "SF-5"  
 58959'45" ASSUMED BASIS OF BEARINGS

WHEATLAND PLACE 3RD ADDITION  
 2853.94'(M)  
 2854.00'(C-P)

SE COR. NE1/4, SEC. 10, TWP. 28-S, R-1-W

NOTE:  
 A DRAINAGE PLAN HAS BEEN DEVELOPED FOR THIS SUBDIVISION AND IS ON FILE WITH THE CITY OF WICHITA, KANSAS. DRAINAGE WENT SHALL REMAIN AS DEPICTED OR AS MODIFIED WITH THE APPROVAL OF THE CITY ENGINEER OF THE CITY OF WICHITA, KANSAS. NO OBSTRUCTIONS WHICH IMPEDS THE FLOW OF THIS DRAINAGE PLAN SHALL BE ALLOWED.