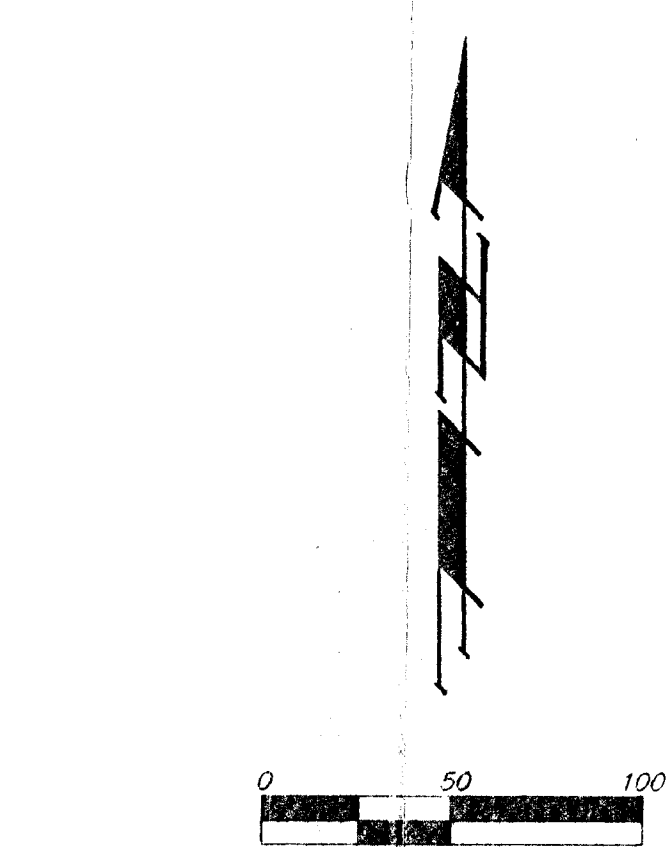
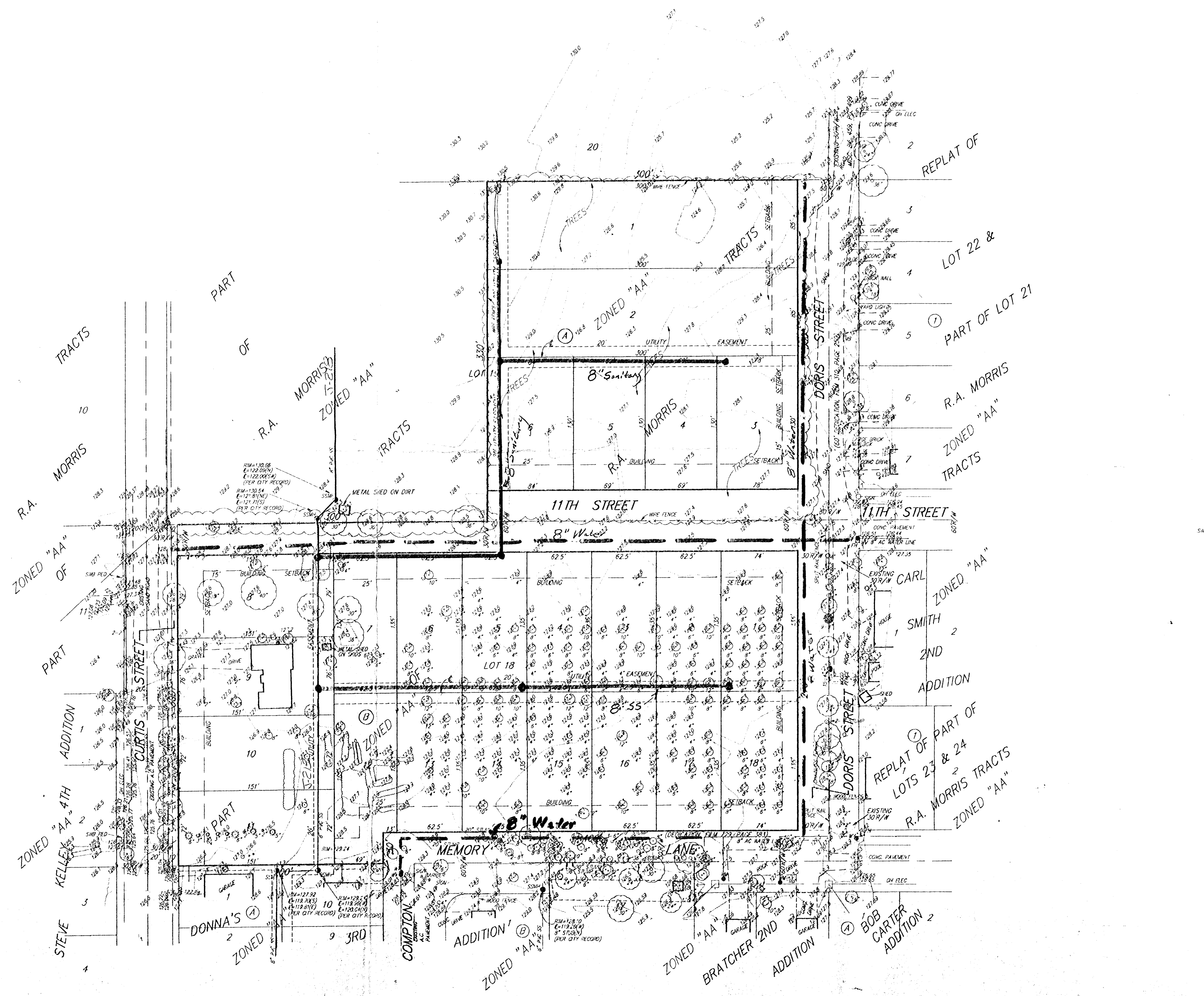


PRELIMINARY PLAT
ECK 4TH ADDITION
 WICHITA, SEDGWICK COUNTY, KANSAS



LEGAL DESCRIPTION:
 A REPLAT OF ALL OF LOT 18 AND THE E1/2 OF LOT 19,
 R.A. MORRIS TRACTS, SEDGWICK COUNTY, KANSAS.

OWNER:
 MATT ECK
 5512 W. CENTRAL
 WICHITA, KS 67212
 PH. 316-942-7402

BENCHMARK:
 CURTIS AND 13TH STREET
 CITY OF WICHITA BENCHMARK DISC. C OF CURTIS EXTENDED,
 2' SOUTH OF SOUTH PROPERTY LINE 1-235 R/W
 21' WEST OF POLE LINE SOUTH EXTENDED
 74' NORTH NORTHWEST OF STREET LIGHT POLE
 68' WEST OF CHAINLINK FENCE CORNER
 ELEV. = 129.152 (CITY DATUM)

- SSM = SANITARY SEWER MAIN
 - FD = FIRE HYDRANT
 - WV = WATER VALVE
 - WP = WATER PILE
 - LP = LIGHT POLE
 - WM = WATER METER
 - GM = GAS METER
 - SMB PED = SOUTHWESTERN BELL PEDESTAL
 - CT = CONIFEROUS TREE
 - DT = DECIDUOUS TREE
-
- ELECTRIC LINE
 - WATER LINE
 - GAS LINE
 - TELEPHONE LINE
 - SANITARY SEWER LINE

Utility Concept 1-22-96

VICINITY MAP