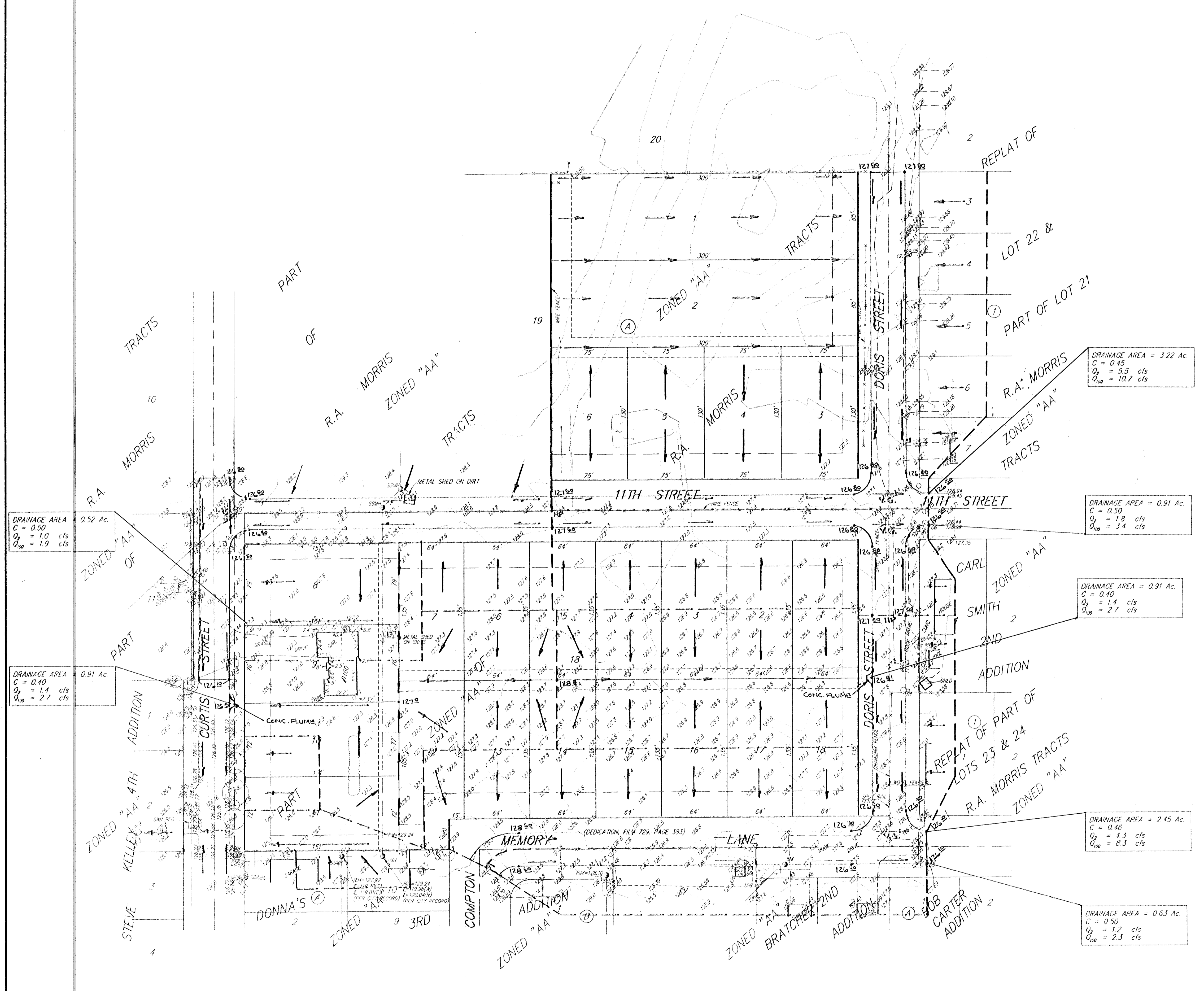


DRAINAGE CONCEPT
ECK 4TH ADDITION
 WICHITA, SEDGWICK COUNTY, KANSAS



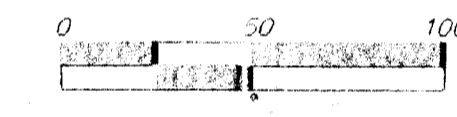
DRAINAGE AREA = 3.22 Ac
 C = 0.45
 Q₁₀ = 5.5 cfs
 Q₁₀₀ = 10.7 cfs

DRAINAGE AREA = 0.91 Ac
 C = 0.50
 Q₁₀ = 1.8 cfs
 Q₁₀₀ = 3.4 cfs

DRAINAGE AREA = 0.91 Ac
 C = 0.40
 Q₁₀ = 1.4 cfs
 Q₁₀₀ = 2.7 cfs

DRAINAGE AREA = 2.45 Ac
 C = 0.46
 Q₁₀ = 1.3 cfs
 Q₁₀₀ = 8.3 cfs

DRAINAGE AREA = 0.63 Ac
 C = 0.50
 Q₁₀ = 1.2 cfs
 Q₁₀₀ = 2.3 cfs

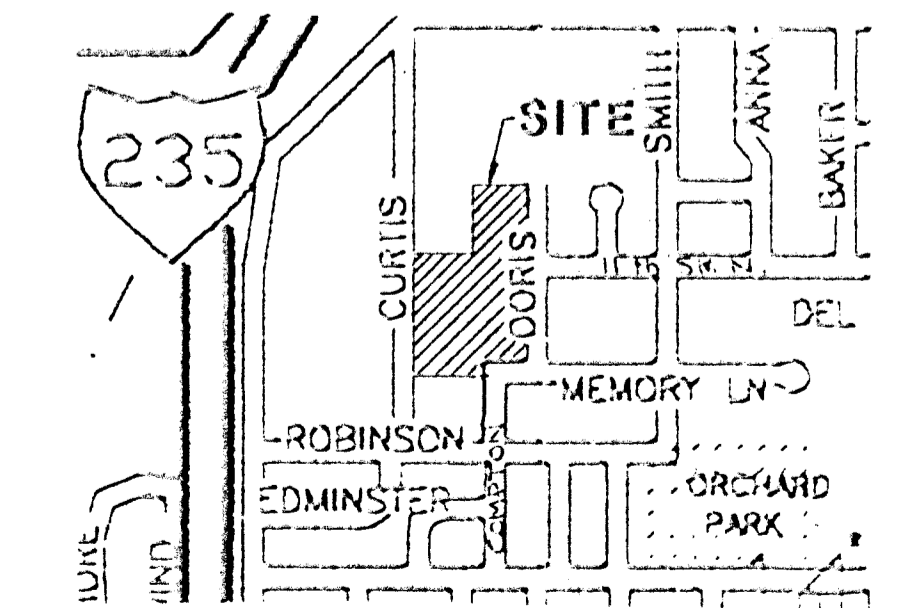


LEGAL DESCRIPTION:
 A REPLAT OF ALL OF LOT 18 AND THE E 1/2 OF LOT 19,
 R.A. MORRIS TRACTS, SEDGWICK COUNTY, KANSAS.

OWNER:
 MATT ECK
 5512 W. CENTRAL
 WICHITA, KS 67212
 PH. 316-942-7402

BENCHMARK:
 CURTIS AND 13TH STREET
 CITY OF WICHITA BENCHMARK DISC. C OF CURTIS EXTENDED,
 2' SOUTH OF SOUTH PROPERTY LINE 1-235 R/W
 21' WEST OF P.C.L. LINE SOUTH EXTENDED
 74' NORTH NORTHWEST OF STREET LIGHT POLE
 68' WEST OF CHAINLINK FENCE CORNER
 ELEV. = 129.152 (CITY DATUM)

NOTE: ALL SPOT ELEVATION ON PROPOSED PAVING
 AND BACKLOT DRAINAGEWAYS ARE FLOW
 LINE ELEVATIONS.



JAN. 20, 1996