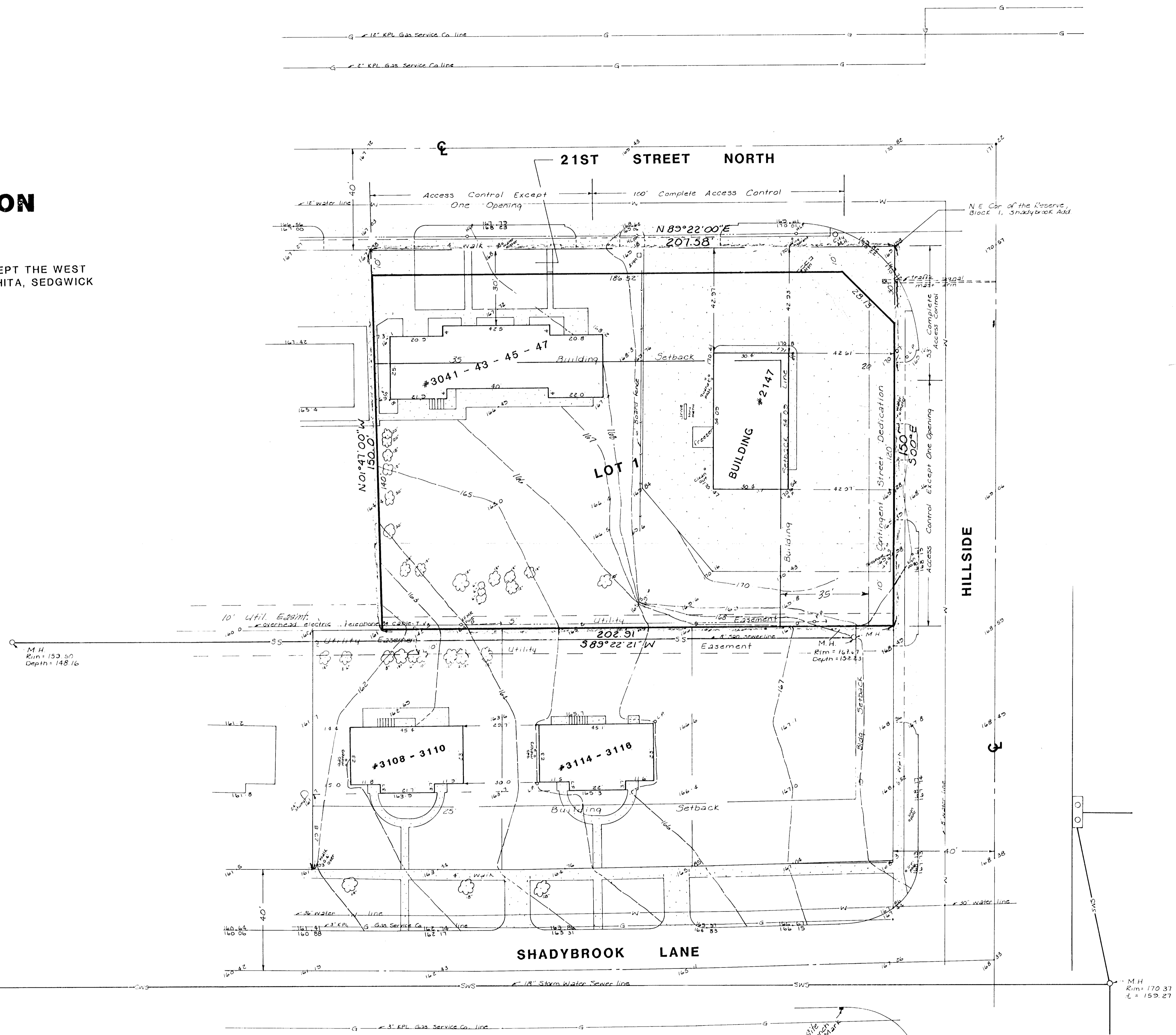


REVISED  
SKETCH PLAT

**ELIZABETH'S ADDITION**

BEING A REPLAT OF THE RESERVE, BLOCK 1, EXCEPT THE WEST  
392 FEET THEREOF, SHADYBROOK ADDITION, WICHITA, SEDGWICK  
COUNTY, KANSAS

OWNERS: JULIUS SMITH  
LEE LUINTRA



Bench Mark  
"B" cut on top of curb, south  
side of Shadybrook & Hillside,  
at end of return  
Elev = 167.23 City Datum

M.H.  
Rim = 157.75  
R = 150.42

M.H.  
Rim = 170.37  
L = 150.27