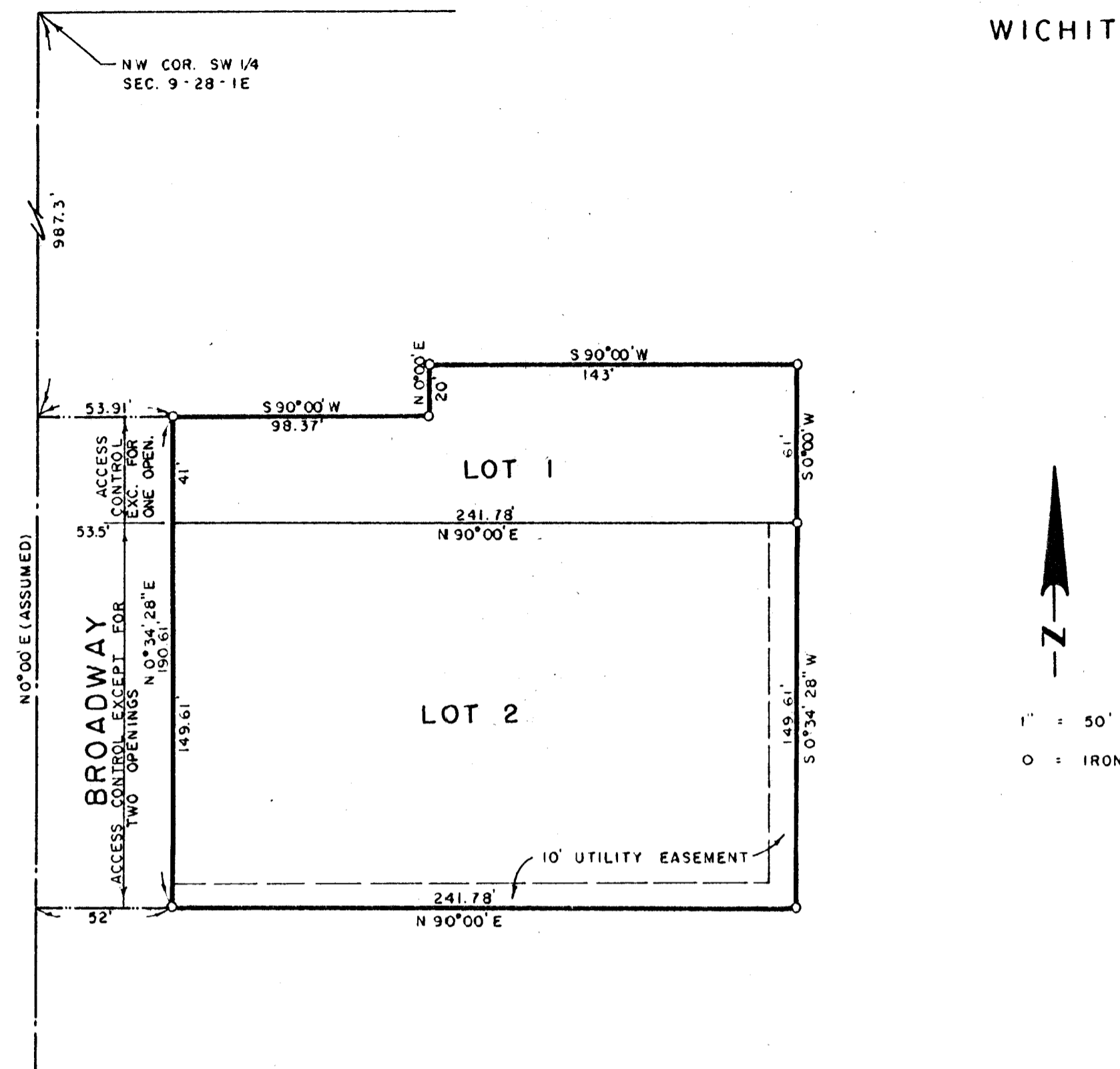


# ERNIE ALCORN ADDITION

WICHITA, SEDGWICK COUNTY, KANSAS



State of Kansas, County of Sedgwick, SS.

I, Lowell D. High, Land Surveyor in said State and County do hereby certify that I have surveyed and platted "ERNIE ALCORN ADDITION", Wichita, Sedgwick County, Kansas and that the accompanying plat is a true and correct exhibit of said survey described as follows: Beginning at a point 1028.3 feet South and 53.5 feet East of the Northwest corner of Lot 10, in Section 9, Township 28 South, Range 1 East of the 6th P.M., Sedgwick County, Kansas, as established by the District Court of Sedgwick County, Kansas in Case No. 19897, said point being in the Easterly Right-of-way line of U.S. Highway 81, thence at right angles East for 241.78 feet, more or less; thence at right angles North for a distance of 61 feet, more or less; thence at a right angle West for a distance of 143 feet; thence at a right angle South for a distance of 20 feet, more or less, to coping 3 feet South of driveway, more or less; thence at a right angle West to a point 41 feet North of the place of beginning, thence South to the point of beginning, AND the West 241.78 feet of beginning at a point 1028.3 feet South of the Northwest Corner of Lot 10, in Section 9, Township 28 South, Range 1 East of the 6th P.M., as established by District Court of Sedgwick County, Kansas, in Case No. 19897; thence South on Section Line 149.61 feet to a point 128 feet North of the Northwest Corner of Aukerman Tract; thence East parallel with the North line of said Aukerman Tract, 1380 feet, more or less, to the East line of Lots 4 and 10; thence Northerly along said line 109.10 feet to the Right Bank of the Arkansas River; thence Northwesterly along said Right Bank 88 feet, more or less, to a point 1028.3 feet South of North line of Lot 10; thence West 1370 feet to the place of beginning, except that part condemned for Highway purposes, described as follows: Beginning 1028.3 feet South of the Northwest Corner of said Lot 10; thence South 149.61 feet; thence East 52 feet; thence Northerly to a point 53.5 feet East of beginning; thence West to the place of beginning, all in Sedgwick County, Kansas.

Lowell D. High, Land Surveyor

Know all men by these presents that we, Ernie J. Alcorn and Shirley A. Alcorn, husband and wife, have caused the land described in the Land Surveyor's Certificate to be platted into Lots to be known as "ERNIE ALCORN ADDITION", Wichita, Sedgwick County, Kansas.

All abutter's rights of access to or from Broadway, over and across the west line of Lot 1 are hereby granted to the appropriate governing body, provided, however, that Lot 1 shall have access to Broadway at one location to be designated by the City Engineer.

All abutter's rights of access to or from Broadway, over and across the west line of Lot 2 are hereby granted to the appropriate governing body, provided, however, that Lot 2 shall have access to Broadway at two locations to be designated by the City Engineer.

Utility easements as indicated on the plat are hereby granted for the construction and maintenance of all public utilities.

Ernie J. Alcorn, Shirley A. Alcorn

State of Kansas, County of Sedgwick, SS.

The foregoing instrument was acknowledged before me this day of \_\_\_\_\_, 1985 by Ernie J. Alcorn and Shirley A. Alcorn, husband and wife.

\_\_\_\_\_, Notary Public

My Commission expires: \_\_\_\_\_

This plat of "ERNIE ALCORN ADDITION", Wichita, Sedgwick County, Kansas has been submitted to and approved by the Wichita-Sedgwick County Metropolitan Area Planning Commission, Wichita, Kansas.

Dated this \_\_\_\_\_ day of \_\_\_\_\_, 1985.

Wichita-Sedgwick County Metropolitan Area Planning Commission

\_\_\_\_\_, Chairman  
\_\_\_\_\_, Secretary

This plat approved and all dedications shown hereon accepted by the Board of City Commissioners of the City of Wichita, Kansas, this \_\_\_\_\_ day of \_\_\_\_\_, 1985.

\_\_\_\_\_, Mayor  
\_\_\_\_\_, City Clerk

This plat approved and all dedications shown hereon accepted by the Board of County Commissioners of Sedgwick County, Kansas, this \_\_\_\_\_ day of \_\_\_\_\_, 1985.

\_\_\_\_\_, Chairman  
\_\_\_\_\_, Commissioner  
ATTEST: \_\_\_\_\_, Commissioner

\_\_\_\_\_, County Clerk

Entered on transfer record this \_\_\_\_\_ day of \_\_\_\_\_, 1985.

\_\_\_\_\_, County Clerk

State of Kansas, County of Sedgwick, SS.

This is to certify that this instrument was filed for record in the Register of Deeds Office at \_\_\_\_\_ o'clock \_\_\_\_\_ m., on the \_\_\_\_\_ day of \_\_\_\_\_, 1985.

\_\_\_\_\_, Register of Deeds  
\_\_\_\_\_, Deputy