

Notes:
 - 4" steel gas main on Mac Arthur
 27' N of the south R.L. dead end
 720' East of East R.L. of Hydraulic
 - Pole shown on south side of
 Mac Arthur belong to K.G.E. &
 are for Street Lightning.

B.M. Disc 31 ft west & 31 ft south of
 the intersection of Hydraulic St. with
 Mac Arthur Rd.
 Elev = 86.273 City datum = 1273.673 m.s.l.

UNPLATTED
 "AAA"
 First United Presbyterian Church

CAMELOT
 ADDITION
 "G"

NEW HOPE
 ADD.
 "AA"

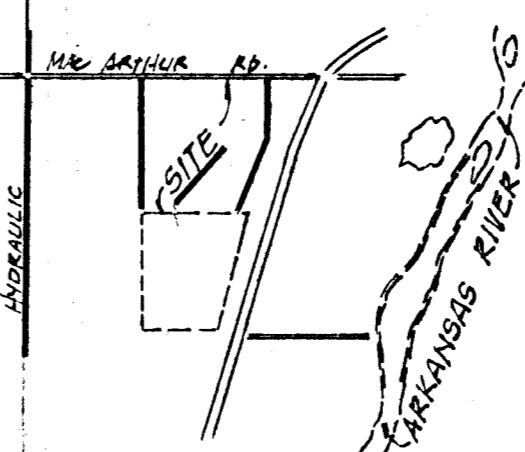
N.H. Cor. NW 1/4, NW 1/4,
 Sec 15, T28N, R1E, 6th P.M.
 rd. 1/8" I.P. in thumb

N.G. Cor. NW 1/4 Sec. 16
 T28N, R1E of 6th P.M.
 rd. 1/8" I.P. in thumb

6-3-88
**DRAINAGE CONCEPT
 EMERY PARK ADDITION**

OWNER • NAGIB T. SHABSHAB % TOMMY N. SHABSHAB
 340 S. KEITH WICHITA, KS. 67209
ENGINEER • P. E. C., P.A.
 1440 E. ENGLISH WICHITA, KS. 67211
 4-20-88

AREA MAP

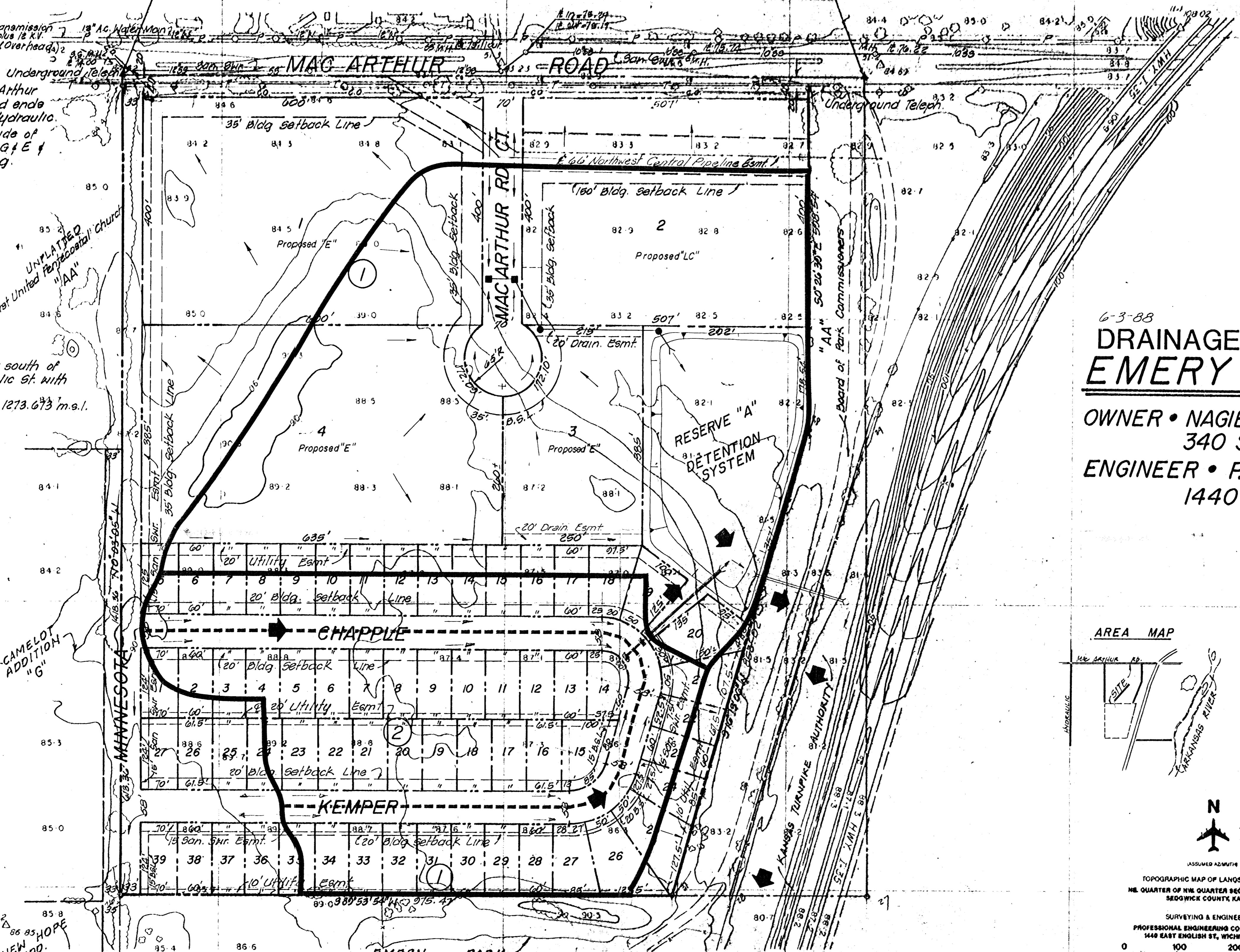


ASSUMED AZIMUTH
 TOPOGRAPHIC MAP OF LANDS LOCATED AT
 NE QUARTER OF NW QUARTER SECTION 15, 28N.1E,
 SEDGWICK COUNTY, KANSAS
 SURVEYING & ENGINEERING
 PROFESSIONAL ENGINEERING CONSULTANTS, P.A.
 1440 EAST ENGLISH ST., WICHITA, KS 67211

PHOTOGRAMMETRY BY
 MILES AIR PHOTO SURVEY
 507 THURSTON STREET
 MANHATTAN, KANSAS 66508
 9-23-78-708 1:62,500 2-27

AERIAL PHOTOGRAPHY
 THE VERTICAL AIR PHOTO
 ALTIITUDE 1,000 FT. A.S.L.
 DATES OBTAINED 7-27-78

- LEGEND**
- Drainage Basin Boundary
 - - - Drainage Sub-basin Boundary
 - Drainage Direction - Minor Storm
 - Drainage Direction - Major Storm
 - Proposed Storm Water Sewer & Inlet



EMERY PARK
 Board of Park Commissioners
 "AA"