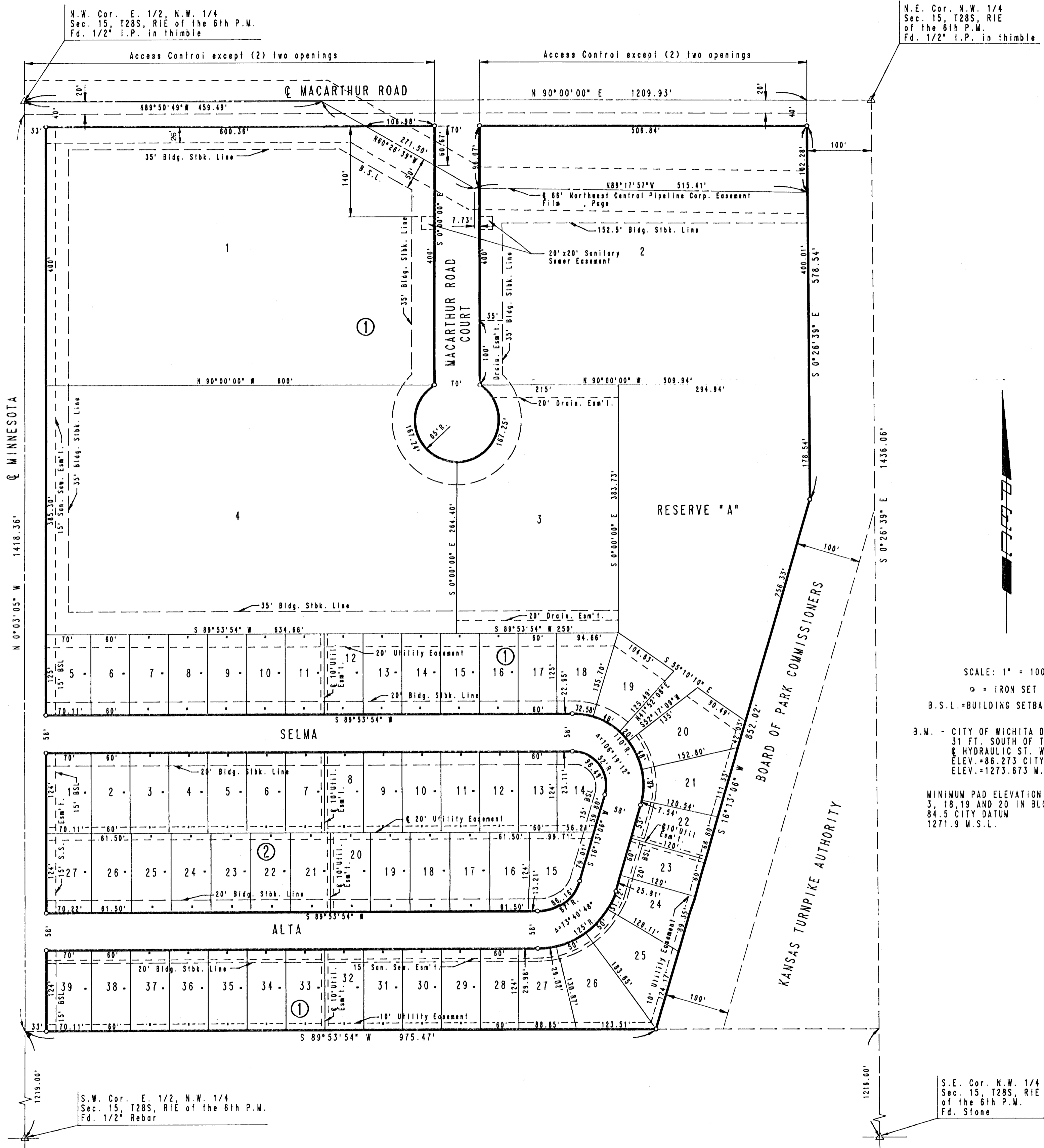


EMERY PARK ADDITION TO WICHITA, SEDGWICK COUNTY, KANSAS



N.E. Cor. N.W. 1/4
Sec. 15, T28S, R1E
of the 6th P.M.
Fd. 1/2" I.P. in thimble

N.W. Cor. E. 1/2, N.W. 1/4
Sec. 15, T28S, R1E of the 6th P.M.
Fd. 1/2" I.P. in thimble

SCALE: 1" = 100'
○ = IRON SET
B.S.L. = BUILDING SETBACK LINE

B.W. - CITY OF WICHITA DISC 31 FT. AND 31 FT. SOUTH OF THE INTERSECTION OF HYDRAULIC ST. WITH MACARTHUR RD. ELEV. +88.273 CITY DATUM ELEV. +1273.673 W.S.L.

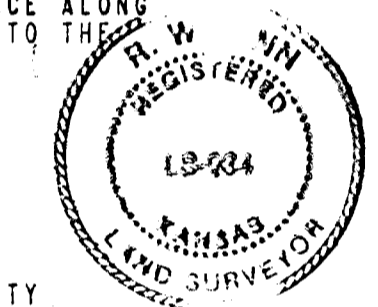
MINIMUM PAD ELEVATION FOR LOTS 2, 3, 18, 19 AND 20 IN BLOCK 1 SHALL BE 84.5 CITY DATUM 1271.9 W.S.L.

S.E. Cor. N.W. 1/4
Sec. 15, T28S, R1E
of the 6th P.M.
Fd. Stone

STATE OF KANSAS)
COUNTY OF SEDGWICK) SS

I, R.W. WILSON, A REGISTERED LAND SURVEYOR IN AFORESAID STATE AND COUNTY, ON THIS 22nd DAY OF October, 1988, IN RESPONSE TO A REQUEST FOR PROFESSIONAL SERVICE FROM THE CITY OF WICHITA, SEDGWICK COUNTY, KANSAS, INTO LOTS, BLOCKS, STREETS AND A RESERVE THE SAME DESCRIBED AS BEGINNING AT THE NW CORNER OF THE NW 1/4 OF SECTION 15, T28S, R1E OF THE 6TH P.M. SEDGWICK COUNTY, KANSAS; THENCE BEARING N90°00'00"E ALONG THE NORTH LINE OF SAID NW 1/4, A DISTANCE OF 1209.93 FEET; THENCE BEARING S0°26'39"W PARALLEL TO AND 100.00 FEET WEST OF EAST LINE OF SAID NW 1/4 A DISTANCE OF 618.54 FEET; THENCE BEARING S16°13'08"W A DISTANCE OF 851.22 FEET; THENCE BEARING S89°53'54"W A DISTANCE OF 975.47 FEET TO A POINT IN THE WEST LINE OF THE E 1/2 OF SAID NW 1/4; THENCE ALONG SAID WEST LINE BEARING N0°03'05"W A DISTANCE OF 1438.36 FEET TO THE POINT OF BEGINNING, CONTAINING 37.79 ACRES MORE OR LESS.

R.W. WILSON, P.L.C. NO. 3684 R.L.S. NO. 934
PROFESSIONAL ENGINEERING CONSULTANTS, P.A.



KNOW ALL MEN BY THESE PRESENTS THAT I, THE UNDERSIGNED PROPERTY OWNER OF THE LAND, AS ABOVE SET FORTH IN THE SURVEYOR'S CERTIFICATE, HAVE CAUSED THE LAND TO BE SURVEYED AND PLATTED INTO LOTS, BLOCKS, STREETS AND A RESERVE THE SAME TO BE KNOWN AS EMERY PARK ADDITION, TO WICHITA, SEDGWICK COUNTY, KANSAS. EASEMENTS AS INDICATED FOR THE CONSTRUCTION AND MAINTENANCE OF PUBLIC UTILITIES, AND DRAINAGE ARE HEREBY GRANTED. THE STREETS ARE HEREBY DEDICATED TO AND FOR THE USE OF THE PUBLIC.

RESERVE "A" IS HEREBY RESERVED FOR LANDSCAPING, OPEN SPACE, PEDESTRIAN USE, DRAINAGE AND A RETENTION-DETENTION SYSTEM. RESERVE "A" SHALL BE OWNED AND MAINTAINED BY THE OWNER(S) OF LOTS 2 AND 3, BLOCK 1, AND THEIR SUCCESSORS OR ASSIGNS.

MINIMUM PAD ELEVATION FOR LOTS 2, 3, 18, 19 AND 20 IN BLOCK 1 SHALL BE 84.5 CITY DATUM, 1271.9 W.S.L.

ALL MATTERS' RIGHT OF ACCESS TO AND FROM MACARTHUR ROAD, OVER AND ACROSS THE NORTH LINE OF LOTS 1 AND 2 IN BLOCK 1, ARE HEREBY GRANTED TO THE CITY OF WICHITA, PROVIDED HOWEVER THAT LOT 1, BLOCK 1 SHALL HAVE ACCESS TO MACARTHUR ROAD AT TWO (2) LOCATIONS AND LOT 2, BLOCK 1 SHALL HAVE ACCESS TO MACARTHUR ROAD AT TWO (2) LOCATIONS; ALL LOCATIONS TO BE DETERMINED BY THE CITY ENGINEER OF THE CITY OF WICHITA, KANSAS.

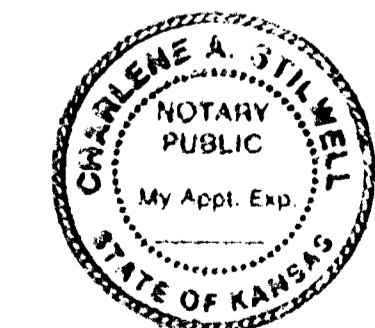
OWNERS:
NAJIB SHABSHAB
MARIE G. SHABSHAB

STATE OF KANSAS)
COUNTY OF SEDGWICK) SS

BE IT REMEMBERED THAT ON THIS 22nd DAY OF October, 1988, BEFORE ME, A NOTARY PUBLIC IN AFORESAID STATE AND COUNTY, CAME NAJIB T. SHABSHAB AND MARIE G. SHABSHAB, HUSBAND AND WIFE, PERSONALLY KNOWN TO ME, THE SAME PERSONS WHO EXECUTED THE FOREGOING INSTRUMENT OF WRITING AND PUBLICLY ACKNOWLEDGED THE EXECUTION OF SAME AS THEIR VOLUNTARY ACT AND DEED. IN TESTIMONY WHEREOF I HAVE HEREUNTO SET MY HAND AFFIXED MY NOTARIAL SEAL THE DAY AND YEAR ABOVE WRITTEN.

Carlene A. Stilwell, NOTARY PUBLIC

MY COMMISSION EXPIRES 11/30/91



THIS PLAT HAS BEEN SUBMITTED TO AND APPROVED BY THE WICHITA-SEDGWICK COUNTY METROPOLITAN AREA PLANNING COMMISSION, WICHITA, KANSAS. DATED THIS DAY OF 1988.

ELTON PARSONS, CHAIRMAN
MARVIN S. KROUT, SECRETARY

THIS PLAT APPROVED AND ALL DEDICATIONS SHOWN HEREON ARE ACCEPTED BY THE CITY COUNCIL OF THE CITY OF WICHITA, KANSAS. DATED THIS DAY OF 1988.

SHELDON KAMEN, MAYOR
DALE E. REA, DEPUTY CITY CLERK

ENTERED ON TRANSFER RECORD, THIS DAY OF 1988.
COUNTY CLERK

THIS IS TO CERTIFY THAT THIS INSTRUMENT WAS FILED FOR RECORD IN THE REGISTER OF DEEDS OFFICE AT WICHITA, KANSAS, ON THIS DAY OF 1988.

PAT KETTLER, REGISTER OF DEEDS
ED RESA, DEPUTY