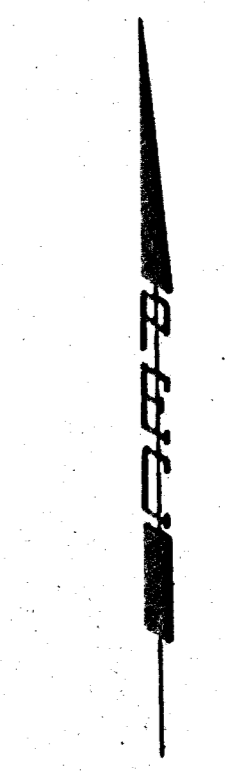
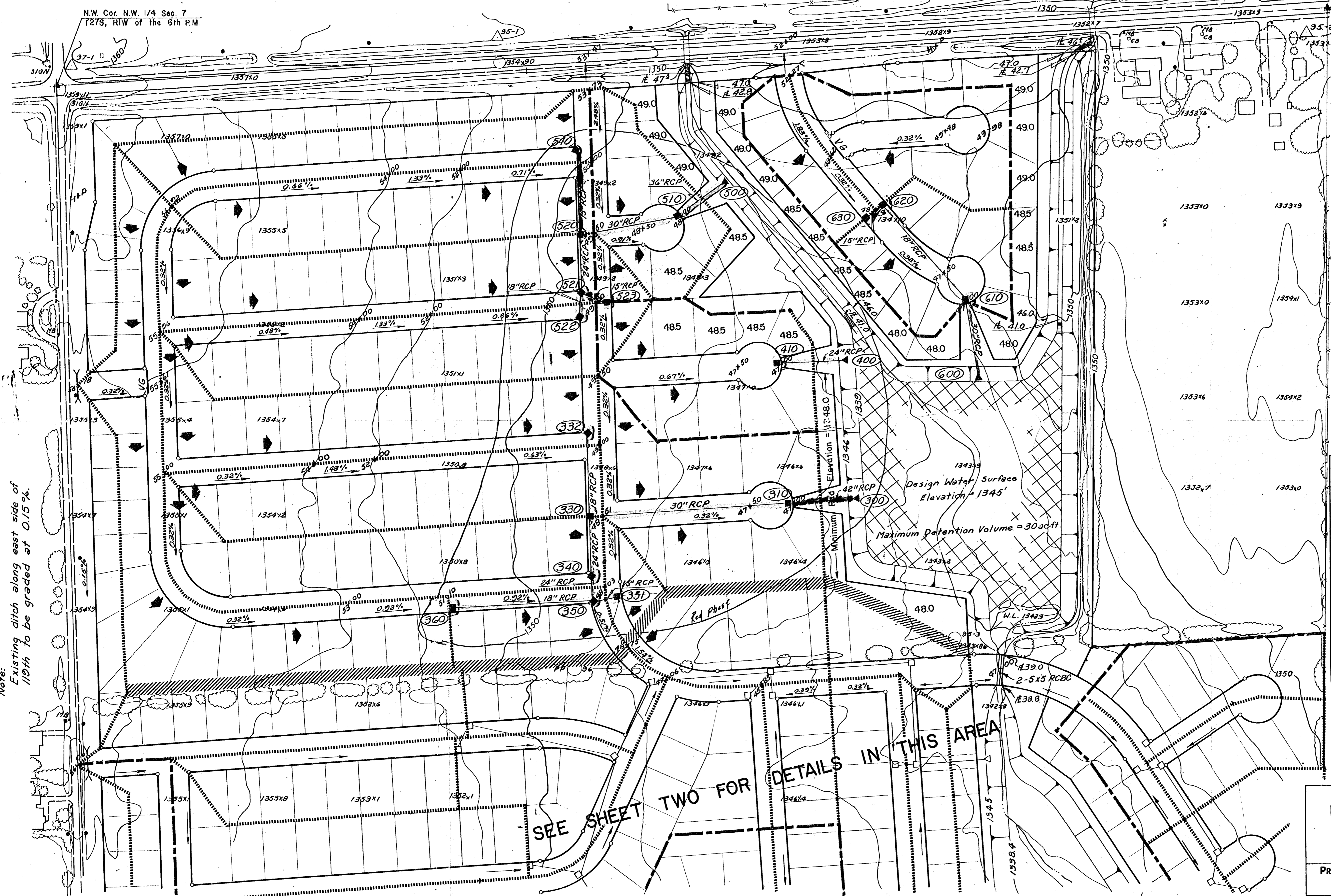


N.W. Cor. N.W. 1/4 Sec. 7  
T27S, R1W of the 6th P.M.

N.E. Cor. N.W. 1/4 Sec. 7  
T27S, R1W of the 6th P.M.

Note:  
Existing ditch along east side of  
19th to be graded at 0.15%.



SCALE: 1"=100'

LEGEND

- INLET LOCATION
- ◄ OUTLET LOCATION
- (251) NODE IDENTIFICATION NO.
- 0.32% STREET GRADE
- ◆ 100 YEAR FLOOD ROUTING
- 45+35 TOP OF CURB ELEVATION
- ..... LIMITS OF 2-YEAR SUBBASIN
- LIMITS OF 100-YEAR DRAINAGE BASIN
- /// DRAINAGE DIVIDE BETWEEN PONDS
- ▬ DROP STRUCTURE REQUIRED

SEE SHEET TWO FOR DETAILS IN THIS AREA

ECHO HILLS 2ND ADDITION  
DRAINAGE PLAN

PROFESSIONAL ENGINEERING CONSULTANTS, P.A.

ENGINEERS  
WICHITA, KANSAS

Designed by	KJH	Checked by	CMB	SH 1 of 2
Drawn by	HBK	Date	JULY 1980	Job No. 30-7928-1120