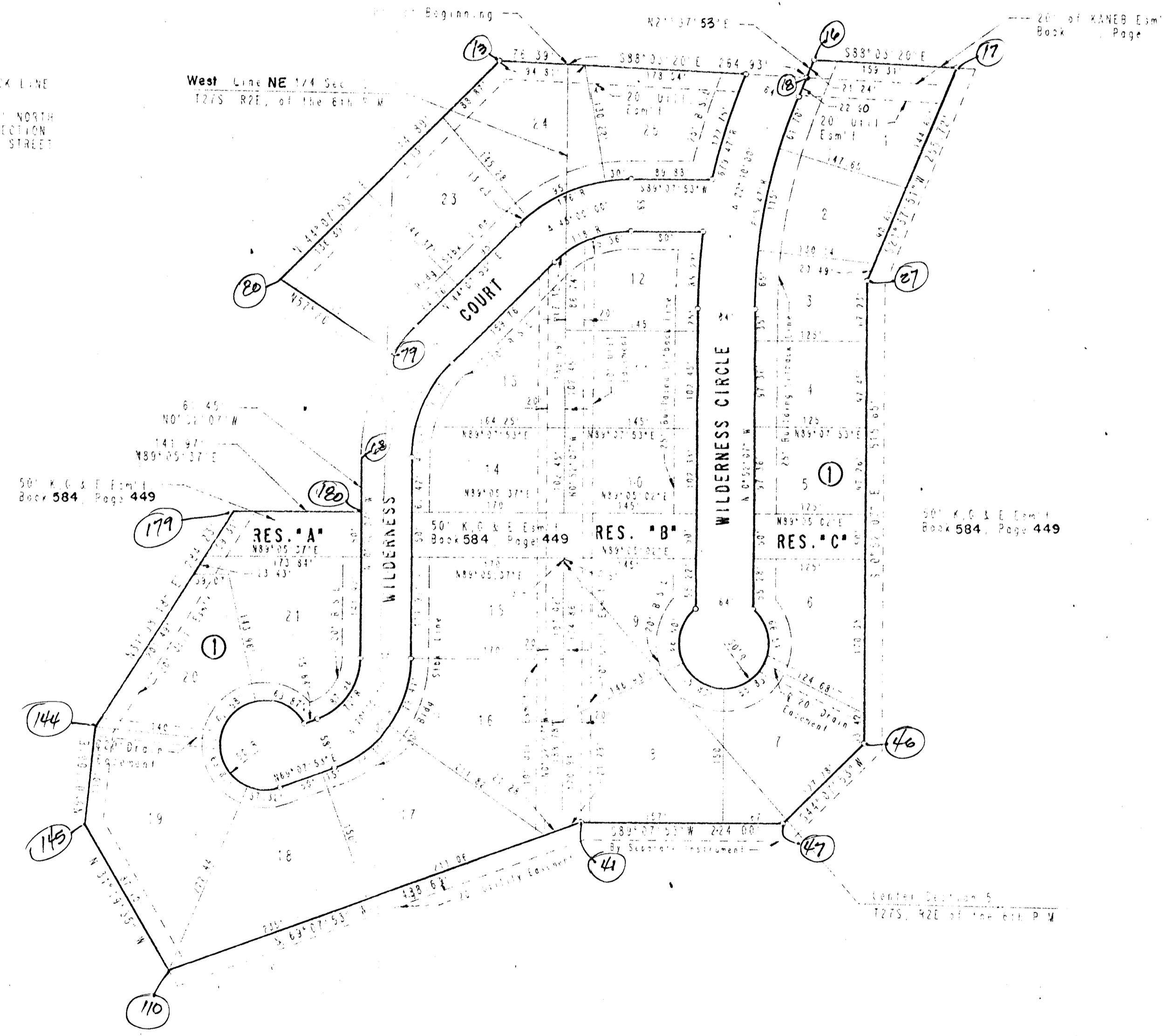


# WILDERNESS 4TH ADDITION TO WICHITA, SEDGWICK COUNTY, KANSAS

SCALE 1" = 100'

IRON S&T  
B S 1 - BUILDING SETBACK LINE  
CITY OF WICHITA B.M. 5100 44' NORTH  
AND 38' WEST OF THE INTERSECTION  
OF THE CENTER LINES OF 29TH STREET  
NORTH AND WEBB ROAD  
ELEV. 220.568 10' U.S. DATUM  
ELEV. 1407.926 M.S.L.



STATE OF KANSAS )  
COUNTY OF SEDGWICK ) 55

I, R. W. LINN, A PROFESSIONAL ENGINEER IN AFORESAID STATE AND COUNTY, DO HEREBY CERTIFY THAT ON THIS \_\_\_\_\_ DAY OF \_\_\_\_\_ 1987, I HAVE BEEN IN RESPONSIBLE CHARGE OF SURVEYING AND PLATTING OF WILDERNESS 4TH ADDITION TO WICHITA, SEDGWICK COUNTY, KANSAS, INTO LOTS AND A BLOCK AND RESERVES, THE SAME BEING A TRACT OF LAND IN SECTION 5, TOWNSHIP 28 SOUTH, RANGE 2 EAST OF THE 6TH PRINCIPAL MERIDIAN, MORE PARTICULARLY DESCRIBED AS: BEGINNING AT THE INTERSECTION OF THE SOUTH LINE OF WILDERNESS THIRD ADDITION, AN ADDITION TO WICHITA, SEDGWICK COUNTY, KANSAS AND THE WEST LINE OF THE NE 1/4 OF SAID SECTION 5, THENCE BEARING S88°03'20"E ALONG SAID SOUTH LINE A DISTANCE OF 264.45 FEET, THENCE BEARING N21°37'53"E A DISTANCE OF 21.24 FEET TO THE SW CORNER OF LOT 3, BLOCK 2, IN SAID WILDERNESS THIRD ADDITION, THENCE BEARING S85°53'22"E A DISTANCE OF 153.37 FEET TO THE SE CORNER OF SAID LOT 3; THENCE BEARING S24°37'51"W A DISTANCE OF 255.12 FEET, THENCE BEARING S44°07'53"W A DISTANCE OF 127.25 FEET, THENCE BEARING S84°07'53"W A DISTANCE OF 224.45 FEET, THENCE BEARING S64°07'53"W A DISTANCE OF 455.65 FEET, THENCE BEARING N31°19'35"W A DISTANCE OF 187.10 FEET, THENCE BEARING N51°01'07"E A DISTANCE OF 284.23 FEET, THENCE BEARING N02°07'50"E A DISTANCE OF 141.37 FEET, THENCE BEARING N02°07'50"E A DISTANCE OF 67.45 FEET TO THE P.O. OF A CURVE TO THE RIGHT HAVING A RADIUS OF 208.00 FEET, THENCE ALONG SAID CURVE THROUGH AN ANGLE OF 33°45'50" AN ARC DISTANCE OF 121.36 FEET, THENCE BEARING N57°02'17"W A DISTANCE OF 151.65 FEET, THENCE BEARING N44°07'53"E A DISTANCE OF 344.89 FEET TO THE SW CORNER OF RESERVE "A" IN SAID WILDERNESS THIRD ADDITION, THENCE ALONG THE SOUTH LINE OF SAID RESERVE "A" BEARING S55°03'22"E A DISTANCE OF 76.39 FEET TO THE POINT OF BEGINNING.

R. W. LINN  
200 S. W. 2654 R. 1, BOX 434  
PROFESSIONAL ENGINEERING CONSULTANTS, P.A.

KNOW ALL MEN BY THESE PRESENTS THAT WE, THE UNDERSIGNED PROPERTY OWNERS OF THE LAND AS ABOVE SET FORTH IN THE ENGINEER'S CERTIFICATE, HAVE CAUSED THE LAND TO BE SURVEYED AND PLATTED INTO LOTS, A BLOCK, STREETS AND RESERVES, THE SAME TO BE KNOWN AS WILDERNESS 4TH ADDITION TO WICHITA, SEDGWICK COUNTY, KANSAS, AS INDICATED FOR THE CONSTRUCTION AND MAINTENANCE OF PUBLIC UTILITIES, DRAINAGE AND ACCESS, ARE HEREBY GRANTED. STREETS ARE HEREBY DEDICATED TO AND FOR THE USE OF THE PUBLIC.

RESERVES "A", "B" AND "C" ARE HEREBY RESERVED FOR LANDSCAPING, IRRIGATION SYSTEMS, UTILITIES CONFINED WITHIN EASEMENTS, AND PEDESTRIAN IMPROVEMENTS. MINIMUM PAD ELEVATION FOR LOTS 18 THROUGH 22 IN BLOCK 1 SHALL BE \_\_\_\_\_ M.S.L. EQUAL \_\_\_\_\_ CITY DATUM.

LOTS 13 THROUGH 16 INCLUSIVE SHALL HAVE THE RIGHT TO EXTEND UTILITY SERVICE CONNECTIONS ACROSS THE WEST 70 FEET OF LOTS 8 THROUGH 12 INCLUSIVE, AND LOTS 8 THROUGH 12 INCLUSIVE SHALL HAVE THE RIGHT TO EXTEND UTILITY SERVICE CONNECTIONS ACROSS THE EAST 20 FEET OF LOTS 13 THROUGH 16 INCLUSIVE.

OWNER: SLAMSON INVESTMENT CORPORATION  
LARRY A. CHAMBERS, VICE PRESIDENT

STATE OF KANSAS )  
COUNTY OF SEDGWICK ) 55

BE IT REMEMBERED THAT ON THIS \_\_\_\_\_ DAY OF \_\_\_\_\_ 1987, BEFORE ME, A NOTARY PUBLIC IN AFORESAID STATE AND COUNTY, CAME LARRY A. CHAMBERS, VICE PRESIDENT OF SLAMSON INVESTMENT CORPORATION, TO ME PERSONALLY KNOWN TO BE THE SAME PERSON WHO EXECUTED THE FOREGOING INSTRUMENT OF WRITING AND DULY ACKNOWLEDGE THE EXECUTION OF SAME FOR AND ON BEHALF AND AS THE VOLUNTARY ACT AND DEED OF SAID CORPORATION, IN TESTIMONY WHEREOF, I HAVE HEREIN SET MY HAND AND AFFIXED MY NOTARIAL SEAL THE DAY AND YEAR ABOVE WRITTEN.

\_\_\_\_\_  
NOTARY PUBLIC  
MY APPOINTMENT EXPIRES \_\_\_\_\_

WE, THE MELLON BANK, N.A., PITTSBURGH, PA., HOLDER OF A MORTGAGE ON THE ABOVE DESCRIBED PROPERTY, DO HEREBY CONSENT TO THE PLATTING OF WILDERNESS 4TH ADDITION TO WICHITA, SEDGWICK COUNTY, KANSAS.

BY \_\_\_\_\_ VICE PRESIDENT

STATE OF PENNSYLVANIA )  
COUNTY OF ALLEGHENY ) 55

BE IT REMEMBERED THAT ON THIS \_\_\_\_\_ DAY OF \_\_\_\_\_ 1987, BEFORE ME, A NOTARY PUBLIC IN AFORESAID STATE AND COUNTY, CAME \_\_\_\_\_ TO ME PERSONALLY KNOWN TO BE THE SAME PERSON WHO EXECUTED THE FOREGOING INSTRUMENT OF WRITING AND DULY ACKNOWLEDGE THE EXECUTION OF SAME FOR AND ON BEHALF AND AS THE VOLUNTARY ACT AND DEED OF SAID BANK, IN TESTIMONY WHEREOF, I HAVE HEREIN SET MY HAND AND AFFIXED MY NOTARIAL SEAL THE DAY AND YEAR ABOVE WRITTEN.

\_\_\_\_\_  
NOTARY PUBLIC  
MY APPOINTMENT EXPIRES \_\_\_\_\_

THIS PLAT HAS BEEN SUBMITTED TO AND APPROVED BY THE WICHITA-SEDGWICK COUNTY METROPOLITAN AREA PLANNING COMMISSION, WICHITA, KANSAS, DATED THIS \_\_\_\_\_ DAY OF \_\_\_\_\_ 1987.

ELTON PARSONS, CHAIRMAN  
MARVIN S. WOOD, SECRETARY

THIS PLAT APPROVED AND ALL DEDICATIONS SHOWN HEREON ARE ACCEPTED BY THE BOARD OF COMMISSIONERS OF THE CITY OF WICHITA, KANSAS, DATED THIS \_\_\_\_\_ DAY OF \_\_\_\_\_ 1987.

ROBERT J. KUCI, MAYOR  
DAVE T. REY, DEPUTY CITY CLERK

ENTERED ON TRANSFER RECORD THIS \_\_\_\_\_ DAY OF \_\_\_\_\_ 1987.

DOV WECH, COUNTY CLERK

THIS IS TO CERTIFY THAT THIS INSTRUMENT WAS FILED FOR RECORD IN THE REGISTRY OF DEEDS OFFICE AT \_\_\_\_\_ WICHITA, KANSAS, ON THIS \_\_\_\_\_ DAY OF \_\_\_\_\_ 1987.

PAUL WETTER, REGISTER OF DEEDS  
ED RESS, DEPUTY