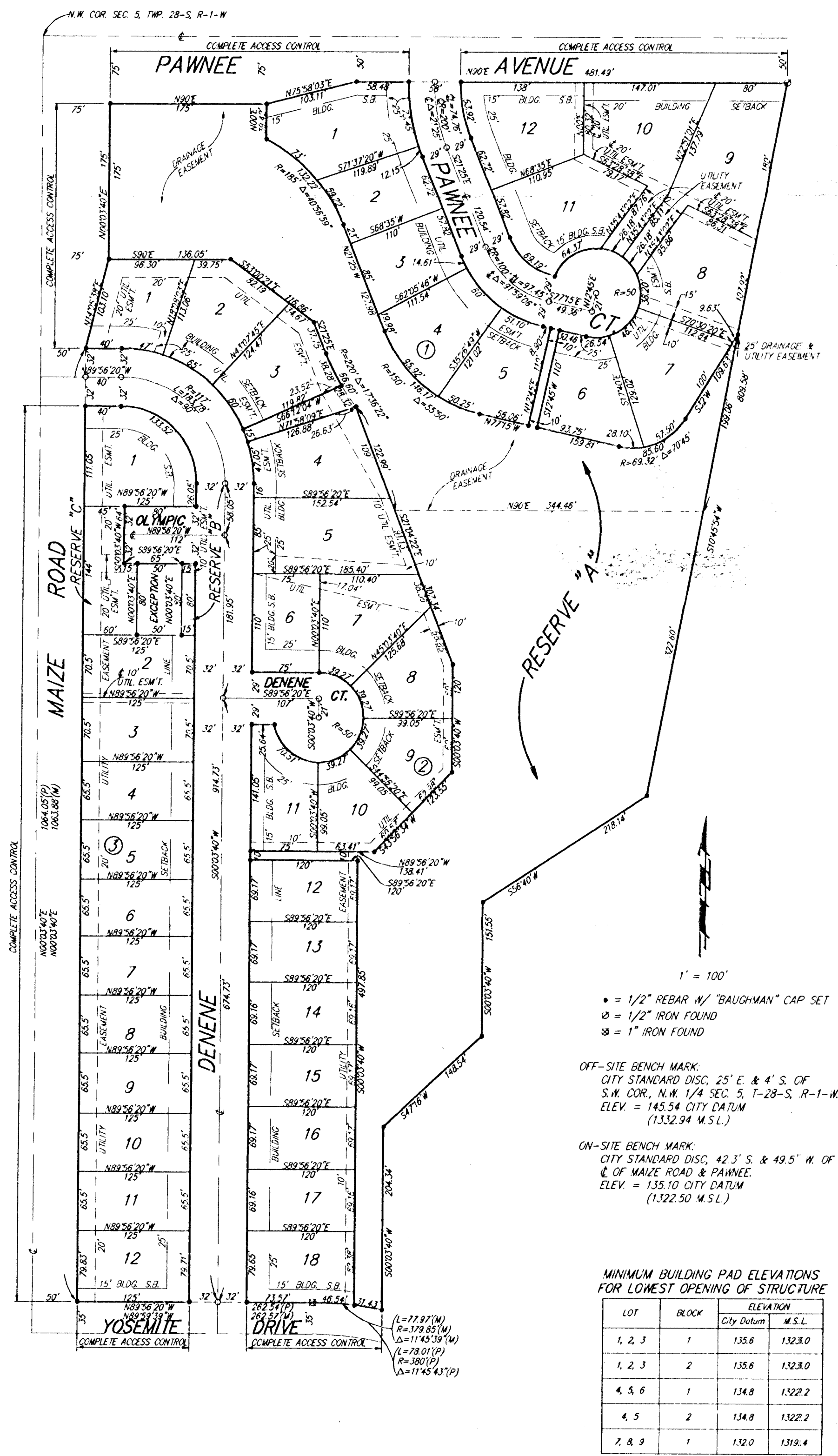


# WILDERNESS AT THE PARK

AN ADDITION TO  
WICHITA, SEDGWICK COUNTY, KANSAS



State of Kansas) SS We, Baughman Company, P.A., Surveyors in  
Sedgwick County) SS aforesaid county and state do hereby certify that we have surveyed  
and platted "WILDERNESS AT THE PARK", an Addition to Wichita, Sedgwick  
County, Kansas, and that the accompanying plat is a true and  
correct exhibit of the land described as and being a replat of Lots  
2, 3, 4, 5, 6, 7, 8, 9, 10, 11, 12, 13, 14, 15, 16, 17, 18, 19, 20, 21,  
22, 23, 24, 25, 26, 27, 28, 29, 30, 31, 32, 33, 34, 35, 36, 37, 38,  
39, 40, 41, 42, 43, 44, 45, 46, 47, 48, 49, 50, 51, 52, 53, 54, 55,  
56, 57, 58, 59, 60, 61, 62, and 63, Block 1 and Lots 1, 3, 4, 5,  
6, 7, 8, 9, 10, 11, 12, 13, 14, 15, 16, 17, and 18, Block 2 together  
with all of Pawnee Court, Olympic Court, Olympic Circle, Shenandoah  
Drive and Shenandoah Courts lying within said Blocks 1 and 2,  
and together with all of Reserve "A" within said Block 1 lying west of the  
following described line: Beginning at the N.E. Corner of said Reserve "A"  
in said Block 1; thence S10°45'54"W along the existing east line  
of said Reserve "A" and extended 809.58 feet; thence S56°40'W,  
218.14 feet; thence S00°03'40"W, 151.55 feet; thence S47°16'W, 148.54  
feet; thence S00°03'40"W, 204.84 feet to a point on the north line  
of Yosemite Drive, all as platted in The Park, an Addition to Wichita,  
Sedgwick County, Kansas.

All being situated in the N.W. 1/4 of Sec. 5, Twp. 28-S, R-1-W of  
the 6th P.M., Sedgwick County, Kansas.  
Existing easements and dedications being vacated by virtue of  
K.S.A. 12-512(b).

9/7/93  
Date

Gregory F. Severns Surveyor  
Gregory F. Severns

Know all men by these presents that we,  
the undersigned, have caused the land described in the surveyors  
certificate to be platted into lots, blocks, streets and reserves to be  
known as "WILDERNESS AT THE PARK", an Addition to Wichita, Sedgwick  
County, Kansas. The utility easements are hereby granted as indicated  
for the construction and maintenance of all public utilities. The drainage  
and utility easement is hereby granted for drainage purposes and for the  
construction and maintenance of all public utilities. The streets are hereby  
dedicated to and for the use of the public. Reserve "A" is hereby reserved for  
open space, recreational uses, sidewalks, and drainage and utility easements.  
The drainage easement in said Reserve "A" is hereby granted for drainage  
purposes. Reserve "A" shall be maintained by the Homeowner's Association.  
Reserves "B" and "C" are hereby reserved for landscaping, open space,  
and the construction and maintenance of all public utilities as confined  
to easements. Reserves "B" and "C" shall be owned and maintained by the  
owner of Lot 1, Block 3. All abutters rights of access to and from Pawnee  
Ave. over and across the north line of Lots 1, 9, 10, and 12, Block 1, and  
the north line of Reserve "A" are hereby granted to the City of Wichita,  
Kansas. All abutters rights of access to and from Maize Road over and  
across the west line of Lots 1, 2, 3, 4, 5, 6, 7, 8, 9, 10, 11, and 12,  
Block 3, the west line of Lot 1, Block 2, and the west line of Reserves "A"  
and "C" are hereby granted to the City of Wichita, Kansas. All abutters  
rights of access to and from Yosemite Drive over and across the south line of  
Lot 12, Block 3, and Lot 18, Block 2 are hereby granted to the City of Wichita,  
Kansas. The Minimum Building Pad Elevations for the lowest opening to  
the structures are as shown on the face of the plat.

A. J. Soerries Carol M. Soerries  
A. J. Soerries Carol M. Soerries

The Park Homeowners' Association, No. 1  
Mark E. Borofsky 9-6-93 President  
Mark Borofsky

Attest: Karen Shope 9-6-93 Secretary  
Karen Shope

We, the undersigned, holders of a mortgage  
on the above described property do hereby consent to this plat of  
"WILDERNESS AT THE PARK", an Addition to Wichita, Sedgwick County,  
Kansas.

Emprise Bank  
Dr. V.P. (Title)

State of Kansas) SS The foregoing instrument acknowledged be-  
fore me this 8th day of September, 1993, by Dr. V.P.  
Dr. V.P. of Emprise Bank, on behalf of the bank.  
(Title)

Melanie Pomeroy Notary Public  
My App't Exp. 5-10-94

State of Kansas) SS The foregoing instrument was acknowledged  
before me this 12th day of September, 1993, by A. J. Soerries  
and Carol M. Soerries, husband and wife.

Lynna J. Chappelle Notary Public  
My App't Exp. 5-4-96

State of Kansas) SS The foregoing instrument was acknowledged  
before me this 7th day of September, 1993, by Mark Borofsky,  
President of The Park Homeowners' Association, No. 1, on behalf of the  
association.

Ed E. Knopp Notary Public  
My App't Exp. 3-3-95

This plat of "WILDERNESS AT THE PARK", an  
Addition to Wichita, Sedgwick County, Kansas has been submitted to and  
approved by the Wichita-Sedgwick County Metropolitan Area Planning  
Commission, Wichita, Kansas,  
Dated this 22nd day of August, 1993.  
Wichita-Sedgwick County Metropolitan Area Planning Commission

\_\_\_\_\_  
Chairman  
\_\_\_\_\_  
Secretary  
Marvin S. Krout

This plat approved and all dedications shown  
hereon accepted by the City Council of the City of Wichita, Kansas,  
this \_\_\_\_\_ day of \_\_\_\_\_, 1993.

\_\_\_\_\_  
Mayor  
Elma Broadfoot  
\_\_\_\_\_  
Deputy City Clerk  
Pat Burnett

Entered on transfer record this \_\_\_\_\_ day of \_\_\_\_\_, 1993.

\_\_\_\_\_  
County Clerk  
Susan E. Crockett-Spoon

State of Kansas) SS This is to certify that this plat has been filed  
for record in the office of the Register of Deeds this \_\_\_\_\_ day of \_\_\_\_\_, 1993, \_\_\_\_\_ o'clock \_\_\_\_\_ M., and is duly recorded.

\_\_\_\_\_  
Register of Deeds  
Pat Kettler  
\_\_\_\_\_  
Deputy  
Ed Resa