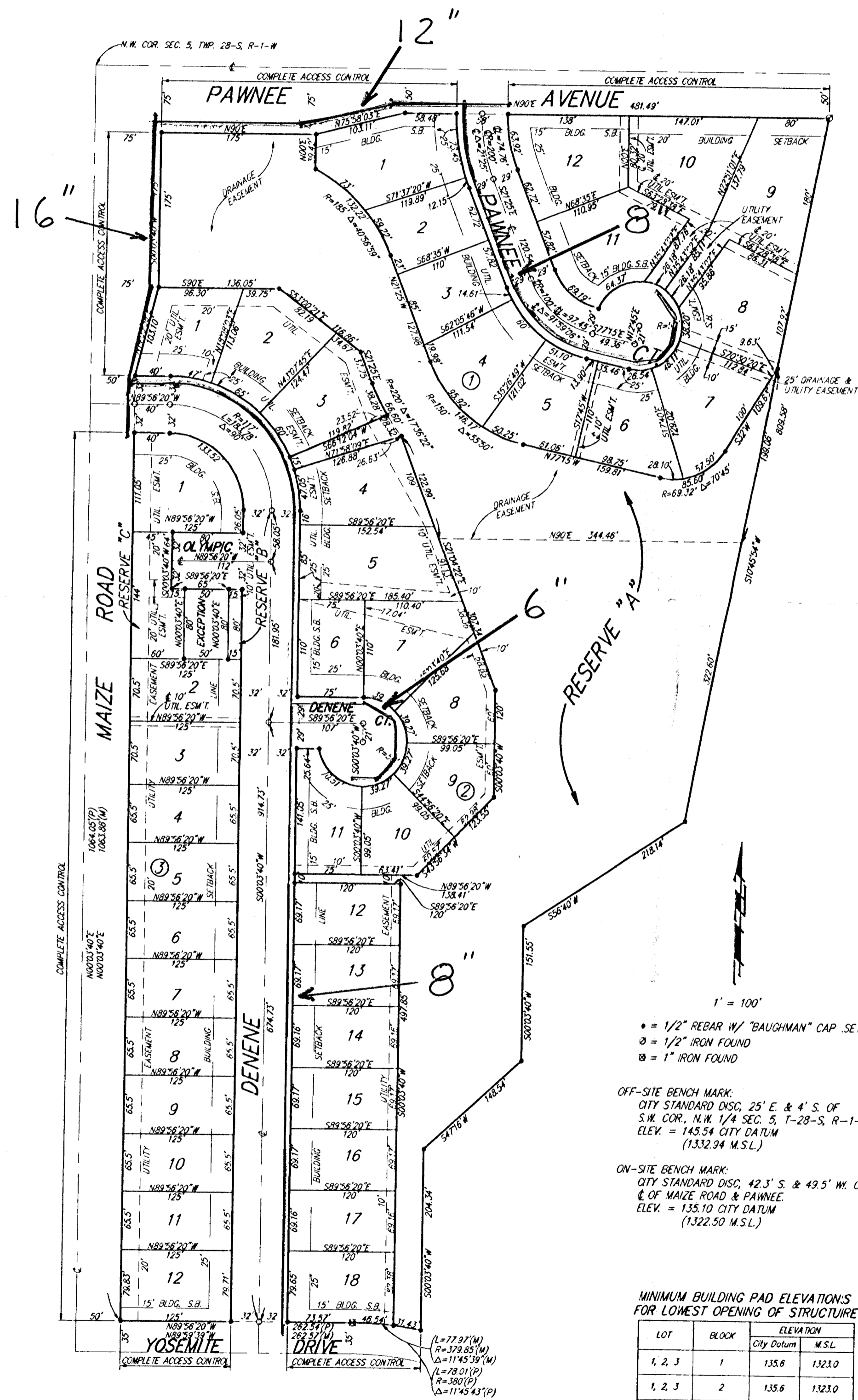


WATER LINE EXTENSIONS
TO SERVE
WILDERNESS AT THE PARK

WILDERNESS AT THE PARK

AN ADDITION TO
WICHITA, SEDGWICK COUNTY, KANSAS



State of Kansas) SS
Sedgwick County) We, Baughman Company, P.A., Surveyors in aforesaid county and state do hereby certify that we have surveyed and platted "WILDERNESS AT THE PARK", an Addition to Wichita, Sedgwick County, Kansas, and that the accompanying plat is a true and correct exhibit of the land described as and being a replat of Lots 2, 3, 4, 5, 6, 7, 8, 9, 10, 11, 12, 13, 14, 15, 16, 17, 18, 19, 20, 21, 22, 23, 24, 25, 26, 27, 28, 29, 30, 31, 32, 33, 34, 35, 36, 37, 38, 39, 40, 41, 42, 43, 44, 45, 46, 47, 48, 49, 50, 51, 52, 53, 54, 55, 56, 57, 58, 59, 60, 61, 62, and 63, Block 1 and Lots 3, 4, 5, 6, 7, 8, 9, 10, 11, 12, 13, 14, 15, 16, 17, and 18, Block 2 together with all of Pawnee Court, Olympic Court, Olympic Circle, Shenandoah Drive and Shenandoah Courts lying within said Blocks 1 and 2, and together with all of Reserve "A" within said Block 1 lying west of the following described line: Beginning at the N.E. Corner of said Reserve "A" in said Block 1; thence S10°45'54"W along the existing east line of said Reserve "A" and extended 809.58 feet; thence S56°40'W, 218.14 feet; thence S00°03'40"W, 151.55 feet; thence S47°16'W, 148.54 feet; thence S00°03'40"W, 204.84 feet to a point on the north line of Yosemite Drive, all as platted in The Park, an Addition to Wichita, Sedgwick County, Kansas.

All being situated in the N.W. 1/4 of Sec. 5, Twp. 28-S, R-1-W of the 6th P.M., Sedgwick County, Kansas.
Existing easements and dedications being vacated by virtue of K.S.A. 12-512(b).

Baughman Company, P.A.

Date _____

Gregory F. Severns Surveyor

Know all men by these presents that we, the undersigned, have caused the land described in the surveyors certificate to be platted into lots, blocks, streets and reserves to be known as "WILDERNESS AT THE PARK", an Addition to Wichita, Sedgwick County, Kansas. The utility easements are hereby granted as indicated for the construction and maintenance of all public utilities. The drainage and utility easement is hereby granted for drainage purposes and for the construction and maintenance of all public utilities. The streets are hereby dedicated to and for the use of the public. Reserve "A" is hereby reserved for open space and drainage and utility easements. The drainage easement in said Reserve "A" is hereby granted for drainage purposes. Reserve "A" shall be maintained by the Homeowner's Association. Reserves "B" and "C" are hereby reserved for landscaping, open space, and the construction and maintenance of all public utilities as confined to easements. Reserves "B" and "C" shall be owned and maintained by the owner of Lot 1, Block 3. All abutters rights of access to and from Pawnee Ave. over and across the north line of Lots 1, 9, 10, and 12, Block 1, and the north line of Reserve "A" are hereby granted to the City of Wichita, Kansas. All abutters rights of access to and from Maize Road over and across the west line of Lots 1, 2, 3, 4, 5, 6, 7, 8, 9, 10, 11, and 12, Block 3, the west line of Lot 1, Block 2, and the west line of Reserves "A" and "C" are hereby granted to the City of Wichita, Kansas. All abutters rights of access to and from Yosemite Drive over and across the south line of Lot 12, Block 3, and Lot 18, Block 2 are hereby granted to the City of Wichita, Kansas. The Minimum Building Pad Elevations for the lowest opening to the structures are as shown on the face of the plat.

A. J. Soerries Carrol M. Soerries

The Park Homeowners' Association, No. 1

Mark Borolsky President

Karen Shope Secretary

We, the undersigned, holders of a mortgage on the above described property do hereby consent to this plat of "WILDERNESS AT THE PARK", an Addition to Wichita, Sedgwick County, Kansas.

Emprise Bank

(Title) _____

State of Kansas) SS
Sedgwick County) The foregoing instrument acknowledged before me this _____ day of _____, 1993, by _____ of Emprise Bank, on behalf of the bank.

(Title) _____

My App't Exp. _____ Notary Public

This plat of "WILDERNESS AT THE PARK", an Addition to Wichita, Sedgwick County, Kansas has been submitted to and approved by the Wichita-Sedgwick County Metropolitan Area Planning Commission, Wichita, Kansas.

Dated this _____ day of _____, 1993.
Wichita-Sedgwick County Metropolitan Area Planning Commission

Chairman

Secretary

Marvin S. Krout

This plat approved and all dedications shown hereon accepted by the City Council of the City of Wichita, Kansas, this _____ day of _____, 1993.

Mayor

Elma Broadfoot

Deputy City Clerk

Pat Burnett

State of Kansas) SS
Sedgwick County) The foregoing instrument was acknowledged before me this _____ day of _____, 1993, by A. J. Soerries and Carrol M. Soerries, husband and wife.

My App't Exp. _____ Notary Public

Entered on transfer record this _____ day of _____, 1993.

County Clerk

Susan E. Crockett-Spoon

State of Kansas) SS
Sedgwick County) This is to certify that this plat has been filed for record in the office of the Register of Deeds this _____ day of _____, 1993, _____ o'clock _____ M., and is duly recorded.

Register of Deeds

Pat Kettler

Deputy

Ed Resa

My App't Exp. _____ Notary Public