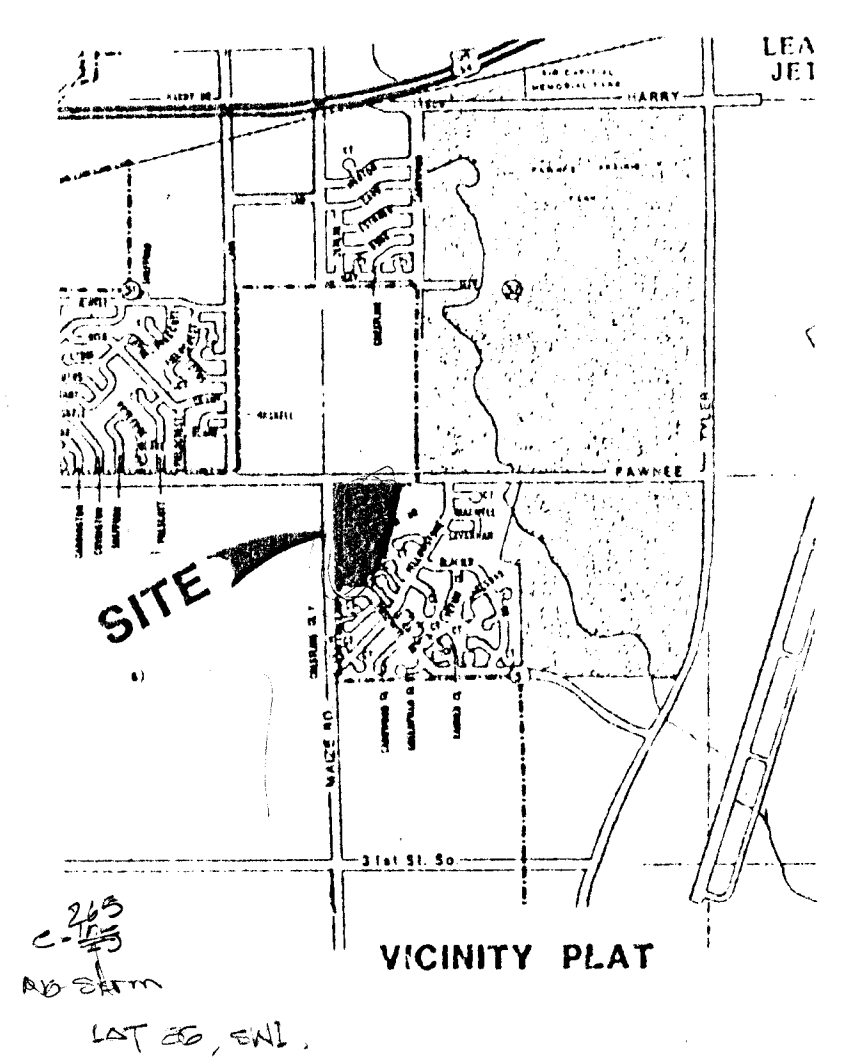
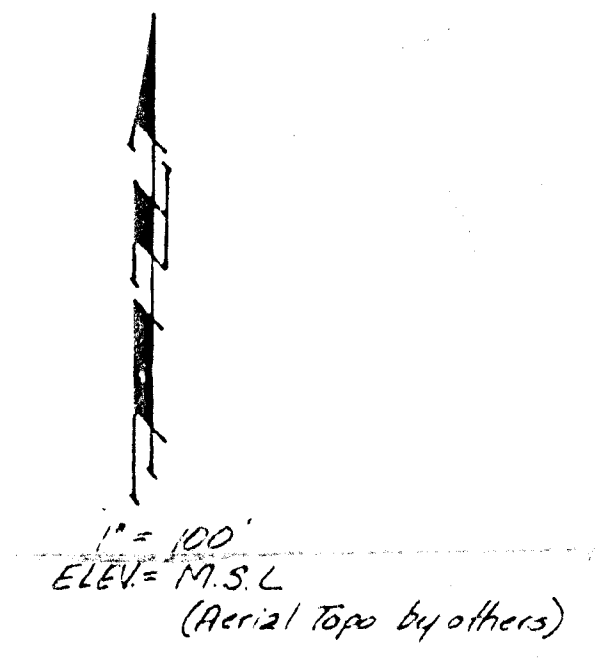
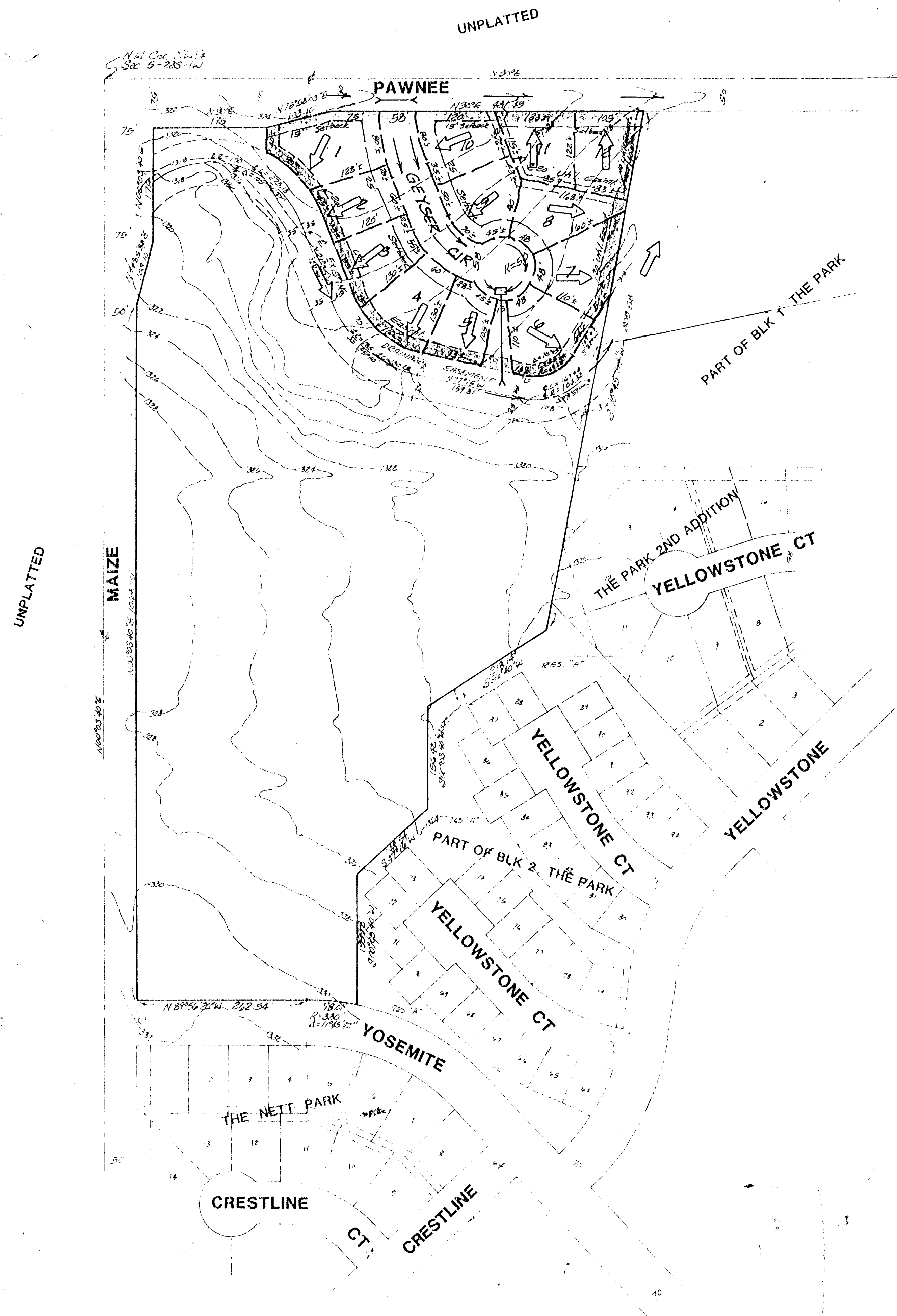


Lat. 88, SW 1 80258
 Par. 80127 \$ 82.34
 \$ 585.37
 \$ 617.71
 water ?

PRELIMINARY PLAT
WILDERNESS AT THE PARK

PART OF THE PART OF BLOCK 2, THE PARK
 WICHITA, SEDGWICK COUNTY, KANSAS

A J SOERRIES REAL ESTATE, INC.
 THE PARK HOMEOWNERS ASSOCIATION NO. 1



DRAINAGE CONCEPT