

FINAL PLAT OF WILLOWBEND FOURTH ADDITION

AN ADDITION TO WICHITA, SEDGWICK COUNTY, KANSAS

Willowbend 4th Addition

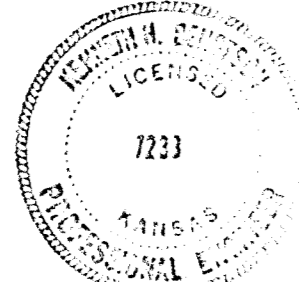
I, Kenneth H. Bengtson, a Civil Engineer in Kansas, do hereby certify that I have been in responsible charge of surveying and platting of "WILLOWBEND FOURTH ADDITION" an addition to Wichita, Sedgwick County, Kansas, into Lots, Blocks, Street, and Reserves, the same being accurately set forth in the accompanying plat and described as follows:

A tract of land lying in the Northeast Quarter, Section 30, Township 26 South, Range 2 East of the 6th P.M., more particularly described as follows:

Commencing from the Southeast corner of said Northeast Quarter; thence N 0° 48' 47" W, 116.94 feet; thence S 89° 11' 13" W, 61.31 feet to the point of beginning; thence N 81° 51' 38" W, 550.00 feet; thence N 18° 08' 22" E, 160.00 feet; thence S 81° 51' 38" E, 72.22 feet; thence N 08° 08' 22" E, 30.00 feet; thence S 81° 51' 38" E, 58.76 feet; thence N 08° 08' 22" E, 68.12 feet; thence N 53° 08' 22" E, 350.00 feet; thence N 89° 11' 13" E, 75.00 feet; thence S 00° 48' 47" E, 375.00 feet to a point on a curve to the right; thence 145.00 feet along said curve having a central angle of 08° 57' 09", a radius of 928.00 feet, and a long chord of 144.85 feet, bearing S 03° 39' 47" W to the point of beginning.

I hereby certify that the details of this plat are correct to the best of my knowledge and belief this 25 day of November, 1986.

Kenneth H. Bengtson
Kenneth H. Bengtson, P.E.
Mid-Kansas Engineering Consultants, P.A.
3500 N. Rock Road, Building #800
Wichita, KS 67226



Know all men by these presents that we the undersigned property owners of the land as above set forth in the Civil Engineers Certificate, have caused the same to be surveyed and platted into Lots, a Block, Reserves and a street, the same to be known as "WILLOWBEND FOURTH ADDITION", an addition to Wichita, Sedgwick County, Kansas. The street is hereby dedicated to and for the use of the public. Reserves are platted for the construction and maintenance of public utilities and drainage. Reserves "A" and "B" are also platted for entrance monuments, landscaping and open spaces. Reserve "C" is also platted for private street and emergency vehicle access. Reserve "D" is also platted as a private drive to serve Lots 7, 8, 9, and 10, Block 1. The Reserves shall be owned and maintained by the Homeowners Association. Easements for the construction and maintenance of private streets, public utilities and drainage, as indicated on the accompanying plat, are hereby granted. The wall easement is hereby platted for the purpose of construction and maintenance of a private wall. All abutters' rights of access to and from Rock Road over and across the East line of Lots 9 and 10 and Reserves "A" and "B" are hereby granted to the City of Wichita, Kansas.

GOLF COURSES OF AMERICA, INC.

By: *Frank A. Mills*
Frank A. Mills, President

STATE OF KANSAS
SEDGWICK COUNTY

Be it remembered that on this 25th day of November, 1986, before me a Notary Public in and for said State and County, came Golf Courses of America, Inc. by Frank A. Mills, President, to me personally known to be the same person who executed the foregoing instrument of writing and duly acknowledged the execution of the same. In testimony whereof I have hereunto set my hand and affixed my notarial seal the day and year above written.

John L. Kautz, Notary Public
My Appointment Expires: June 9, 1988

We, the Bank Audi (USA), mortgagees on the above described property, do hereby consent to the plat of "WILLOWBEND FOURTH ADDITION".

By: *Phillip S. Frick*
Phillip S. Frick, Attorney-in-Fact

STATE OF KANSAS
SEDGWICK COUNTY

Be it remembered that on this 24th day of November, 1986, before me a Notary Public in and for said State and County, came Phillip S. Frick, Attorney-in-Fact on behalf of Bank Audi (USA), to me personally known to be the same person who executed the foregoing instrument of writing and duly acknowledged the execution of the same. In testimony whereof I have hereunto set my hand and affixed my notarial seal the day and year above written.

Patricia Wassinger, Notary Public
My Appointment Expires: June 9, 1988

This plat of "WILLOWBEND FOURTH ADDITION" has been submitted to and approved by the Wichita-Sedgwick County Metropolitan Area Planning Commission, Wichita, Kansas.

Dated this 13th day of November, 1986.

WICHITA-SEDGWICK COUNTY METROPOLITAN AREA PLANNING COMMISSION

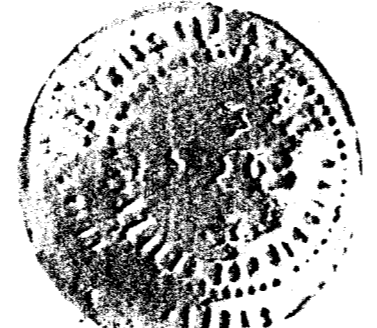
John Perry Moore, Chairman
Michael E. Lindbeck, Secretary

This plat approved and all dedications shown hereon, if any, accepted by the City Commission of the City of Wichita, Kansas, this 17th day of December, 1986.

Tony Casado, Mayor
Debi E. Adams, City Clerk

Entered on transfer record this _____ day of _____, 1986.

Don Wright, County Clerk



STATE OF KANSAS
SEDGWICK COUNTY

This is to certify that this instrument was filed for record in the Register of Deeds office this _____ day of _____, 1986.

Pat Kactor, Register of Deeds
Ed Resa, Deputy

Traverse
TOTAL AREA = 176,532 (INCLUDING RESERVES AND MULBERRY CIRCLE)

