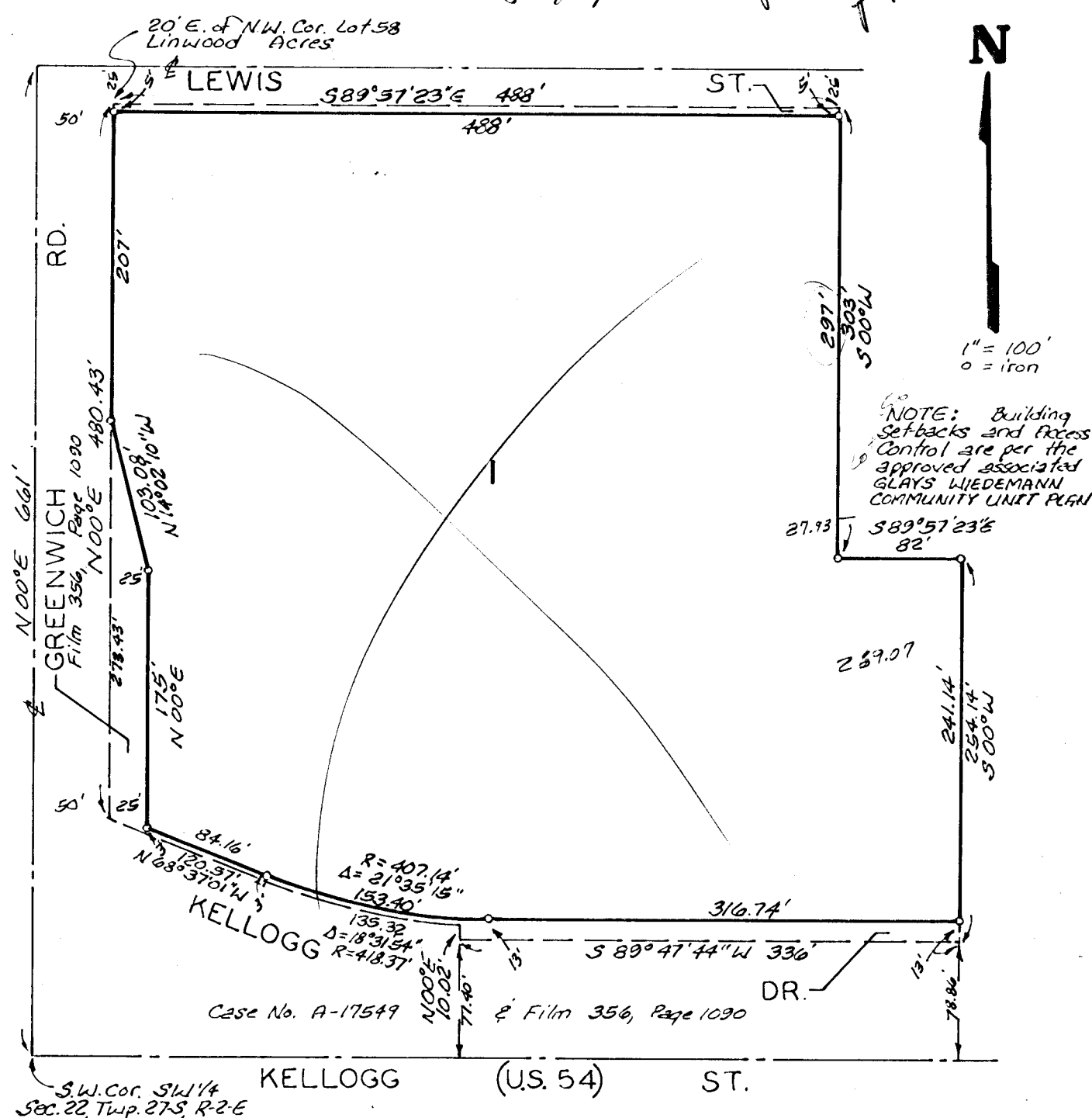


# GLADYS WIEDEMANN ADDITION

WICHITA, KANSAS.

VOID / see Revised Plat



State of Kansas } S.S. We, Baughman Company, P.A.,  
Sedwick County } Surveyors in aforesaid county and state do hereby  
certify that we have surveyed and platted  
"GLADYS WIEDEMANN ADDITION", Wichita,  
Kansas and that the accompanying plat is a  
true and correct exhibit of the property surveyed,  
described as and being a replat of Lots  
57, 58, 59, 60, 61, 62, 63, 64, and the west 82 feet of Lot  
65, except therefrom those portions condemned for  
street purposes in District Court Case No. A-17549  
and dedicated for street purposes and recorded at  
Film 274, Page 816, and Film 356, Page 1090.  
All being situated in the SW 1/4 of Sec. 22  
Twp. 27-S; R-2-E of the 6th. P.M.

Baughman Company, P.A.

Date \_\_\_\_\_ Surveyor  
William L. Korber

Know all men by these presents that we, the undersigned, have caused the land described in the surveyors certificate to be platted into a Lot and streets to be known as "GLADYS WIEDEMANN ADDITION", Wichita, Kansas. The utility easements are hereby granted for the construction and maintenance of all public utilities. The streets are hereby dedicated to and for the use of the public.

K.T. Wiedemann Trust by Gladys Wiedemann  
Co-Trustee and by The Fourth National Bank  
and Trust Company, Wichita, Co-Trustee

Gladys Wiedemann, Co-Trustee

Gladys Wiedemann

The Fourth National Bank and  
Trust Company, Wichita,  
Co-Trustee

D.L. Opplinger Vice-President  
& Trust Officer

This plat of "GLADYS WIEDEMANN ADDITION", Wichita, Kansas, has been submitted to and approved by the Wichita-Sedwick County Metropolitan Area Planning Commission, Wichita, Kansas. Dated this \_\_\_\_\_ day of \_\_\_\_\_, 1983.  
Wichita-Sedwick County Metropolitan Area Planning Commission.

\_\_\_\_\_  
David Bayouth Chairman  
\_\_\_\_\_  
Robert A. Lakin Secretary

This plat approved and all dedications shown hereon accepted by the Board of Commissioners of the City of Wichita, Kansas, this \_\_\_\_\_ day of \_\_\_\_\_, 1983.

\_\_\_\_\_  
Albert J. Kirk Mayor  
\_\_\_\_\_  
Donald C. Dziwick City Clerk

This plat approved and all dedications shown hereon accepted by the Board of Commissioners of Sedwick County, Kansas, this \_\_\_\_\_ day of \_\_\_\_\_, 1983.

\_\_\_\_\_  
Jack Spratt Chairman  
\_\_\_\_\_  
Tom Scott Commissioners  
\_\_\_\_\_  
Donald E. Grapp Commissioners  
\_\_\_\_\_  
Dorothy K. White County Clerk

Entered on transfer record this \_\_\_\_\_ day of \_\_\_\_\_, 1983.

Dorothy K. White  
County Clerk

State of Kansas } S.S. This is to certify that this plat  
Sedwick County } has been filed for record in the office of the  
Register of Deeds this \_\_\_\_\_ day of \_\_\_\_\_  
1983, at \_\_\_\_\_ o'clock \_\_\_\_\_ M.; and is duly recorded.

\_\_\_\_\_  
Bette F. Mearns Register of Deeds  
\_\_\_\_\_  
Pat Kettler Deputy

State of Kansas } S.S. Be it remembered that on this  
Sedwick County } day of \_\_\_\_\_, 1983, before me, a notary  
public in aforesaid county and state came Gladys  
Wiedemann, Co-Trustee of the K.T. Wiedemann  
Trust, known to me to be the same person  
who acknowledged the foregoing instrument  
of writing and duly acknowledged the same,  
for and on behalf and as the act and deed of  
said Trust. In testimony whereof I have  
hereunto set my hand and affixed my notarial  
seal the day and year above written.

\_\_\_\_\_  
Notary Public  
My App't. Exp. \_\_\_\_\_

State of Kansas } S.S. Be it remembered that on this  
Sedwick County } day of \_\_\_\_\_, 1983, before me a notary  
public in aforesaid county and state, came  
D.L. Opplinger, Vice-President and Trust Officer  
of The Fourth National Bank and Trust  
Company, Co-Trustee of the K.T. Wiedemann  
Trust, known to me to be the same person  
who acknowledged the foregoing instrument  
of writing and duly acknowledged the same  
for and on behalf and as the act and deed of  
said Trust. In testimony whereof I have  
hereunto set my hand and affixed my notarial  
seal the day and year above written.

\_\_\_\_\_  
Notary Public  
My App't. Exp. \_\_\_\_\_