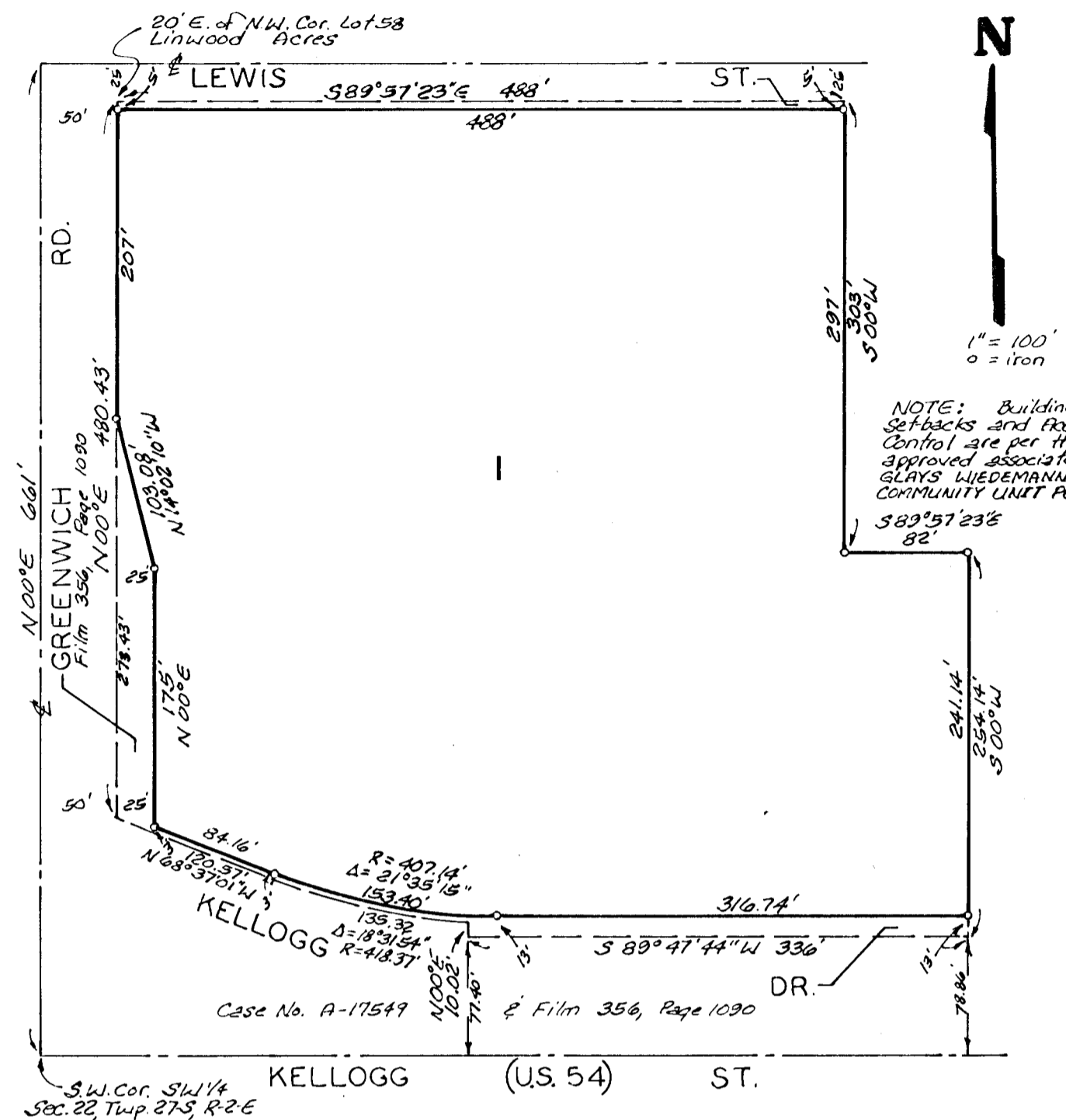


GLADYS WIEDEMANN ADDITION

WICHITA, KANSAS.



State of Kansas 2 S.S. Sedwick County, S.S. We, Baughman Company, P.A., Surveyors in aforesaid county and state do hereby certify that we have surveyed and platted "GLADYS WIEDEMANN ADDITION", Wichita, Kansas and that the accompanying plat is a true and correct exhibit of the property surveyed, described as and being a replat of Lots 57, 58, 59, 60, 61, 62, 63, 64 and the west 82 feet of Lot 65, except therefrom those portions condemned for street purposes in District Court Case No. A-17549 and dedicated for street purposes and recorded at Film 274 Page 816 and Film 356 Page 1090. All being situated in the SW 1/4 of Sec. 22 Twp. 27-S, R-2-E of the 6th. P.M.

Baughman Company, P.A.

Date _____ Surveyor
William L. Kerber

Know all men by these presents that we, the undersigned, have caused the land described in the surveyors' certificate to be platted into a Lot and Streets to be known as "GLADYS WIEDEMANN ADDITION" Wichita, Kansas. The utility easements are hereby granted for the construction and maintenance of all public utilities. The streets are hereby dedicated to and for the use of the public.

K.T. Wiedemann Trust by Gladys Wiedemann Co-Trustee and by The Fourth National Bank and Trust Company, Wichita, Co-Trustee

Gladys Wiedemann, Co-Trustee

Gladys Wiedemann

The Fourth National Bank and Trust Company, Wichita, Co-Trustee

D.L. Opplinger Vice-President & Trust Officer

This plat of "GLADYS WIEDEMANN ADDITION", Wichita, Kansas, has been submitted to and approved by the Wichita-Sedwick County Metropolitan Area Planning Commission, Wichita, Kansas. Dated this _____ day of _____, 1983. Wichita-Sedwick County Metropolitan Area Planning Commission.

Chairman
David Bayouth
Secretary
Robert A. Lakin

This plat approved and all dedications shown hereon accepted by the Board of Commissioners of the City of Wichita, Kansas, this _____ day of _____, 1983.

Mayor
Albert J. Kirk
City Clerk
Donald C. Bissick

This plat approved and all dedications shown hereon accepted by the Board of Commissioners of Sedwick County, Kansas, this _____ day of _____, 1983.

Chairman
Jack Spratt
Commissioners
Tom Scott
Commissioners
Donald E. Grapp
County Clerk
Dorothy K. White

Entered on transfer record this _____ day of _____, 1983.

County Clerk
Dorothy K. White

State of Kansas 2 S.S. Sedwick County, S.S. This is to certify that this plat has been filed for record in the office of the Register of Deeds this _____ day of _____, 1983, at _____ o'clock _____ M.; and is duly recorded.

Register of Deeds
Bette K. Mozart
Deputy
Pat Kettler

State of Kansas 2 S.S. Be it remembered that on this _____ day of _____, 1983, before me, a notary public in aforesaid county and state came Gladys Wiedemann, Co-Trustee of the K.T. Wiedemann Trust, known to me to be the same person who acknowledged the foregoing instrument of writing and duly acknowledged the same, for and on behalf and as the act and deed of said Trust. In testimony whereof I have hereunto set my hand and affixed my notarial seal the day and year above written.

My App't. Exp. _____ Notary Public

State of Kansas 2 S.S. Be it remembered that on this _____ day of _____, 1983, before me a notary public in aforesaid county and state, came D.L. Opplinger, Vice-President and Trust Officer of The Fourth National Bank and Trust Company, Co-Trustee of the K.T. Wiedemann Trust, known to me to be the same person who acknowledged the foregoing instrument of writing and duly acknowledged the same for and on behalf and as the act and deed of said Trust. In testimony whereof I have hereunto set my hand and affixed my notarial seal the day and year above written.

My App't. Exp. _____ Notary Public