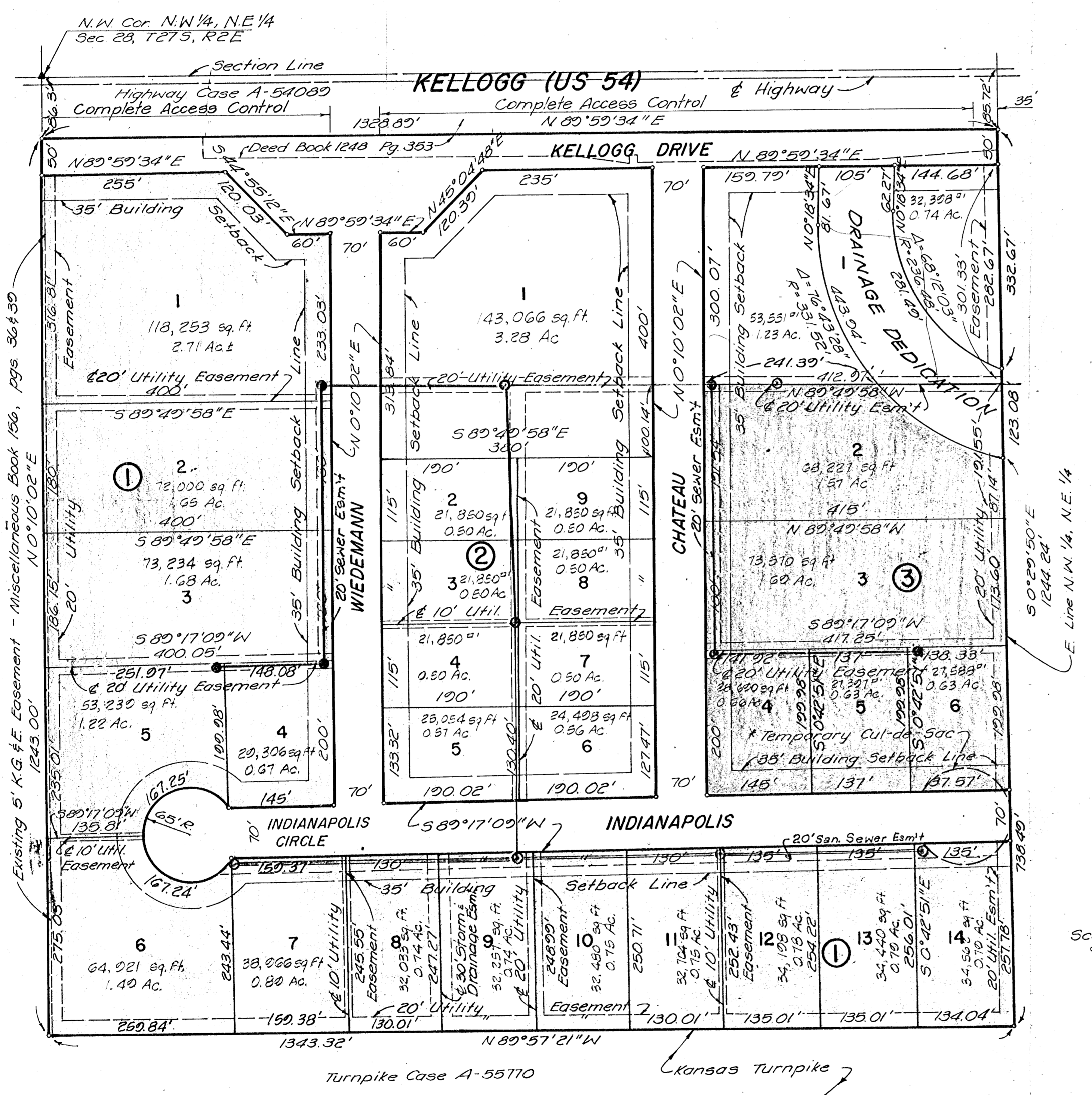


# K.T. WIEDEMANN BUSINESS PARK WICHITA, SEDGWICK COUNTY, KANSAS



STATE OF KANSAS  
SEDGWICK COUNTY

I, CHARLES M. JEFFRIES, A REGISTERED LAND SURVEYOR IN AFORESAID STATE AND COUNTY, DO HEREBY CERTIFY, THAT ON THIS \_\_\_\_\_ DAY OF \_\_\_\_\_, 1980, I HAVE SURVEYED AND PLATTED K. T. WIEDEMANN BUSINESS PARK, WICHITA, SEDGWICK COUNTY, KANSAS INTO BLOCKS, LOTS AND STREETS, DESCRIBED AS FOLLOWS: THE NORTHWEST QUARTER OF THE NORTHEAST QUARTER (NW/4 NE/4) OF SECTION 28, TOWNSHIP 27 SOUTH, RANGE 2 EAST, SUBJECT TO THE RIGHTS AS HERETOFORE CONVEYED BY OR CONVEYED TO THE STATE OF KANSAS FOR HIGHWAY PURPOSES AS APPEAR OF RECORD, AND MORE PARTICULARLY DESCRIBED AS: BEGINNING AT A POINT IN THE WEST LINE AND 86.30 FEET SOUTH OF THE NW CORNER OF THE NW 1/4, NE 1/4 OF SECTION 28 TOWNSHIP 27 SOUTH, RANGE 2 EAST OF THE 6TH P.M.; THENCE BEARING N 89°59'34" E ALONG THE SOUTH RIGHT-OF-WAY LINE OF HIGHWAY US 54 A DISTANCE OF 1328.89 FEET TO A POINT IN THE EAST LINE OF THE NW 1/4, NE 1/4 OF SAID SECTION 28, THENCE BEARING S 0°29'50" E ALONG SAID EAST LINE, A DISTANCE OF 1244.24 FEET TO A POINT IN THE NORTH RIGHT-OF-WAY LINE OF THE KANSAS TURNPIKE; THENCE BEARING N 89°57'21" W ALONG SAID NORTH RIGHT-OF-WAY LINE A DISTANCE OF 1343.32 FEET TO A POINT IN THE WEST LINE OF THE NW 1/4, NE 1/4 OF SAID SECTION 28; THENCE BEARING N 0°10'02" E ALONG SAID WEST LINE A DISTANCE OF 1243.00 FEET TO THE POINT OF BEGINNING EXCEPT FOR THAT PORTION OF KELLOGG DRIVE ALREADY DEDICATED BY INSTRUMENT IN DEED BOOK 1248 PAGE 353.

CHARLES M. JEFFRIES  
REG. NO. 595

KNOW ALL MEN BY THESE PRESENTS, THAT WE, THE UNDERSIGNED PROPERTY OWNERS OF THE LAND AS ABOVE SET FORTH IN THE SURVEYOR'S CERTIFICATE, HAVE CAUSED THE LAND TO BE SURVEYED AND PLATTED INTO LOTS, BLOCKS, STREETS AND DRAINAGE RIGHT-OF-WAY, THE SAME TO BE KNOWN AS K. T. WIEDEMANN BUSINESS PARK, WICHITA, SEDGWICK COUNTY, KANSAS. THE STREETS ARE HEREBY DEDICATED TO AND FOR THE USE OF THE PUBLIC. THE EASEMENTS, AS INDICATED, ARE GRANTED FOR CONSTRUCTION AND MAINTENANCE OF PUBLIC UTILITIES. THE DRAINAGE DEDICATION IS HEREBY DEDICATED TO THE PUBLIC FOR DRAINAGE PURPOSES. ACCESS CONTROL BETWEEN KELLOGG AND KELLOGG DRIVE AS SHOWN IN PLAT IS HEREBY GRANTED TO THE CITY OF WICHITA.

THE K. T. WIEDEMANN TRUST  
GLADYS H. G. WIEDEMANN  
TRUSTEE  
FOURTH NATIONAL BANK AND TRUST COMPANY  
VICE-PRESIDENT

STATE OF KANSAS  
SEDGWICK COUNTY

BE IT REMEMBERED THAT ON THIS \_\_\_\_\_ DAY OF \_\_\_\_\_, 1980, BEFORE ME, A NOTARY PUBLIC IN AFORESAID COUNTY AND STATE, CAME GLADYS H. G. WIEDEMANN AND THE FOURTH NATIONAL BANK AND TRUST COMPANY, WICHITA, KANSAS BY \_\_\_\_\_ AND \_\_\_\_\_ TESTAMENTARY TRUSTEES UNDER THE WILL AND OF THE ESTATE OF K. T. WIEDEMANN, TO ME KNOWN TO BE THE SAME PERSONS WHO EXECUTED THE FOREGOING INSTRUMENT OF WRITING AND DULY ACKNOWLEDGED THE EXECUTION OF THE SAME. IN TESTIMONY WHEREOF I HAVE HEREUNTO SET MY HAND AND AFFIXED MY NOTARIAL SEAL THE DAY AND YEAR ABOVE WRITTEN.

\_\_\_\_\_  
NOTARY PUBLIC  
MY COMMISSION EXPIRES \_\_\_\_\_

THIS PLAT HAS BEEN SUBMITTED TO AND APPROVED BY THE WICHITA-SEDGWICK COUNTY METROPOLITAN AREA PLANNING COMMISSION, WICHITA, KANSAS.

DATED THIS \_\_\_\_\_ DAY OF \_\_\_\_\_, 1980.

\_\_\_\_\_  
WILLIAM J. GOEBEL CHAIRMAN  
\_\_\_\_\_  
ROBERT A. LAKIN SECRETARY

THIS PLAT APPROVED AND ALL DEDICATIONS SHOWN HEREON ARE ACCEPTED BY THE CITY COMMISSION OF THE CITY OF WICHITA, KANSAS, THIS \_\_\_\_\_ DAY OF \_\_\_\_\_, 1980.

\_\_\_\_\_  
ROBERT G. KNIGHT MAYOR  
\_\_\_\_\_  
DONALD C. GISTICK CITY CLERK

THIS IS TO CERTIFY THAT THIS INSTRUMENT WAS FILED FOR RECORD IN THE REGISTER OF DEEDS OFFICE AT \_\_\_\_\_ M., ON THE \_\_\_\_\_ DAY OF \_\_\_\_\_, 1980.

\_\_\_\_\_  
BETTE F. MC CART REGISTER OF DEEDS  
\_\_\_\_\_  
PAT RETTLER DEPUTY

THIS PLAT APPROVED AND ALL DEDICATIONS SHOWN HEREON ARE ACCEPTED BY THE BOARD OF COUNTY COMMISSIONERS OF SEDGWICK COUNTY, KANSAS, THIS \_\_\_\_\_ DAY OF \_\_\_\_\_, 1980.

\_\_\_\_\_  
EVERETT PATRICK CHAIRMAN  
\_\_\_\_\_  
TOM SCOTT COMMISSIONER  
\_\_\_\_\_  
DONALD E. GRAGO COMMISSIONER

ATTEST

\_\_\_\_\_  
DOROTHY K. WHITE  
COUNTY CLERK

ENTERED ON TRANSFER RECORD THIS \_\_\_\_\_ DAY OF \_\_\_\_\_, 1980.

\_\_\_\_\_  
DOROTHY K. WHITE COUNTY CLERK

Scale: 1" = 100'  
• Irons Set

\* To be dedicated by Separate Instrument