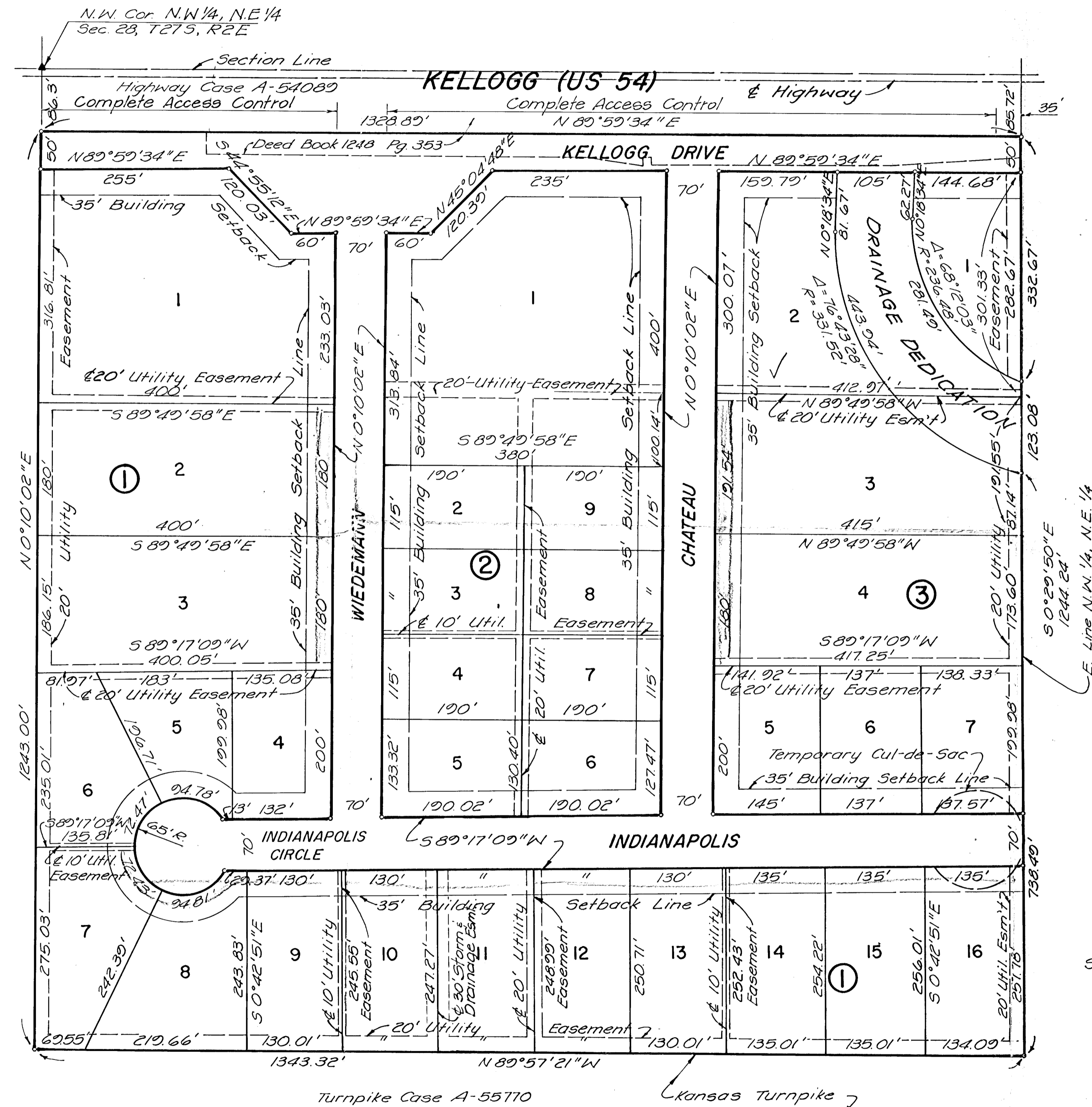


K.T. WIEDEMANN BUSINESS PARK WICHITA, SEDGWICK COUNTY, KANSAS



STATE OF KANSAS
 COUNTY OF SEDGWICK

I, CHARLES M. JEFFRIES, A REGISTERED LAND SURVEYOR IN AFORESAID STATE AND COUNTY, DO HEREBY CERTIFY, THAT ON THIS _____ DAY OF _____, 1978, I HAVE SURVEYED AND PLATTED K. T. WIEDEMANN BUSINESS PARK, WICHITA, SEDGWICK COUNTY, KANSAS INTO BLOCKS, LOTS AND STREETS, DESCRIBED AS FOLLOWS: THE NORTHWEST QUARTER OF THE NORTHEAST QUARTER (NW/4 NE/4) OF SECTION 28, TOWNSHIP 27 SOUTH, RANGE 2 EAST, SUBJECT TO THE RIGHTS AS HERETOFORE CONDEMNED BY OR CONVEYED TO THE STATE OF KANSAS FOR HIGHWAY PURPOSES AS APPEAR OF RECORD, AND MORE PARTICULARLY DESCRIBED AS: BEGINNING AT A POINT IN THE WEST LINE AND 86.30 FEET SOUTH OF THE NW CORNER OF THE NW 1/4, NE 1/4 OF SECTION 28 TOWNSHIP 27 SOUTH, RANGE 2 EAST OF THE 6TH P.M.; THENCE BEARING N 89°59'34" E ALONG THE SOUTH RIGHT-OF-WAY LINE OF HIGHWAY US 54 A DISTANCE OF 1328.89 FEET TO A POINT IN THE EAST LINE OF THE NW 1/4, NE 1/4 OF SAID SECTION 28, THENCE BEARING S 0°29'50" E ALONG SAID EAST LINE, A DISTANCE OF 1244.24 FEET TO A POINT IN THE NORTH RIGHT-OF-WAY LINE OF THE KANSAS TURNPIKE; THENCE BEARING N 89°57'21" W ALONG SAID NORTH RIGHT-OF-WAY LINE A DISTANCE OF 1343.32 FEET TO A POINT IN THE WEST LINE OF THE NW 1/4, NE 1/4 OF SAID SECTION 28; THENCE BEARING N 0°10'02" E ALONG SAID WEST LINE A DISTANCE OF 1243.00 FEET TO THE POINT OF BEGINNING EXCEPT FOR THAT PORTION OF KELLOGG DRIVE ALREADY DEDICATED BY INSTRUMENT IN DEED BOOK 1248 PAGE 353.

CHARLES M. JEFFRIES
 REG. NO. 555

KNOW ALL MEN BY THESE PRESENTS, THAT WE, THE UNDERSIGNED PROPERTY OWNERS OF THE LAND AS ABOVE SET FORTH IN THE SURVEYOR'S CERTIFICATE, HAVE CAUSED THE LAND TO BE SURVEYED AND PLATTED INTO LOTS, BLOCKS, STREETS AND DRAINAGE RIGHT-OF-WAY. THE SAME TO BE KNOWN AS K. T. WIEDEMANN BUSINESS PARK, WICHITA, SEDGWICK COUNTY, KANSAS. THE STREETS ARE HEREBY DEDICATED TO AND FOR THE USE OF THE PUBLIC. THE EASEMENTS, AS INDICATED, FOR CONSTRUCTION AND MAINTENANCE OF PUBLIC UTILITIES. THE DRAINAGE RIGHT-OF-WAY IS HEREBY DEDICATED TO THE PUBLIC FOR DRAINAGE PURPOSES. COMPLETE ACCESS CONTROL ACROSS THE NORTH LINE OF KELLOGG DRIVE AS SHOWN IN PLAT IS HEREBY GRANTED TO THE CITY OF WICHITA.

THE K. T. WIEDEMANN TRUST

GLADYS H. G. WIEDEMANN
 TRUSTEE
 FOURTH NATIONAL BANK AND TRUST COMPANY

VICE-PRESIDENT

STATE OF KANSAS
 SEDGWICK COUNTY

BE IT REMEMBERED THAT ON THIS _____ DAY OF _____, 197____, BEFORE ME, A NOTARY PUBLIC IN AFORESAID COUNTY AND STATE, CAME GLADYS H. G. WIEDEMANN AND THE FOURTH NATIONAL BANK AND TRUST COMPANY, WICHITA, KANSAS BY _____ AND _____, TESTAMENTARY TRUSTEES UNDER THE WILL AND OF THE ESTATE OF K. T. WIEDEMANN, TO ME KNOWN TO BE THE SAME PERSONS WHO EXECUTED THE FOREGOING INSTRUMENT OF WRITING AND DULY ACKNOWLEDGED THE EXECUTION OF THE SAME. IN TESTIMONY WHEREOF I HAVE HEREUNTO SET MY HAND AND AFFIXED MY NOTARIAL SEAL THE DAY AND YEAR ABOVE WRITTEN.

 NOTARY PUBLIC
 MY COMMISSION EXPIRES _____

THIS PLAT HAS BEEN SUBMITTED TO AND APPROVED BY THE WICHITA-SEDGWICK COUNTY METROPOLITAN AREA PLANNING COMMISSION, WICHITA, KANSAS.

DATED THIS _____ DAY OF _____, 1978.

 CHAIRMAN
 JERRY GRIEDER

 SECRETARY
 ROBERT A. LAKIN

THIS PLAT APPROVED AND ALL DEDICATIONS SHOWN HEREON ARE ACCEPTED BY THE CITY COMMISSION OF THE CITY OF WICHITA, KANSAS, THIS _____ DAY OF _____, 1978.

 MAYOR
 CORNIE A. PETERS

 CITY CLERK
 DONALD C. GISTICK

THIS IS TO CERTIFY THAT THIS INSTRUMENT WAS FILED FOR RECORD IN THE REGISTER OF DEEDS OFFICE AT _____ M., ON THE _____ DAY OF _____, 1978.

 REGISTER OF DEEDS
 BETTE F. MC CART

 DEPUTY
 PAY KETTLER

THIS PLAT APPROVED AND ALL DEDICATIONS SHOWN HEREON ARE ACCEPTED BY THE BOARD OF COUNTY COMMISSIONERS OF SEDGWICK COUNTY, KANSAS, THIS _____ DAY OF _____, 1978.

 CHAIRMAN
 TOM SCOTT

 COMMISSIONER
 EVERETT PATRICK

 COMMISSIONER
 DON GRAGG

ATTEST

DOROTHY K. WHITE
 COUNTY CLERK

ENTERED ON TRANSFER RECORD THIS _____ DAY OF _____, 1978.

 COUNTY CLERK
 DOROTHY K. WHITE

Scale: 1" = 100'
 ° = Irons Set