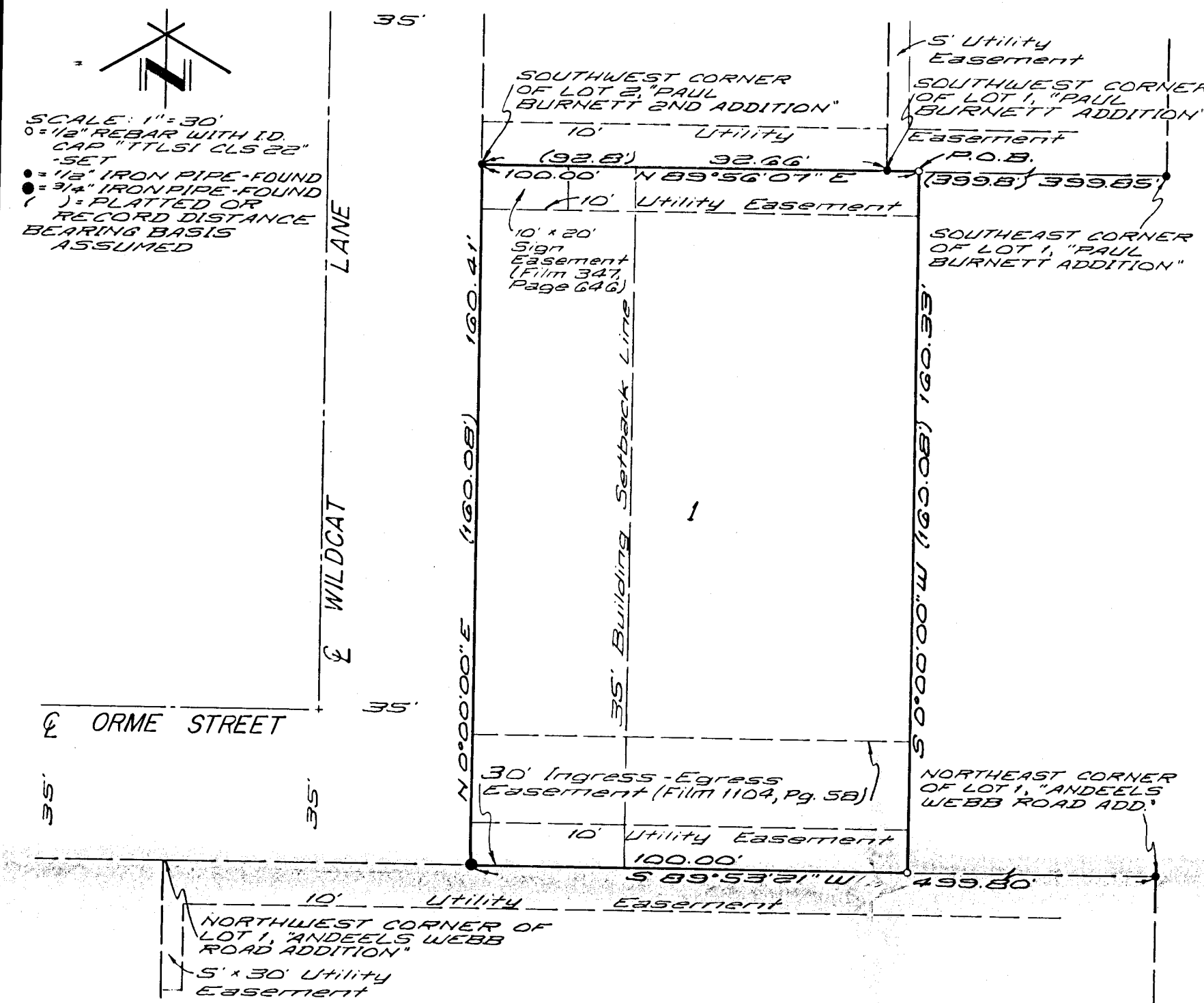


# WILDCAT RSC ADDITION WICHITA, KANSAS

(NW 1/4 SEC. 28, T27S, R2E)



KNOW ALL MEN BY THESE PRESENTS THAT THE UNDERSIGNED OWNER OF THE LAND DESCRIBED IN THE SURVEYOR'S CERTIFICATE HAS CAUSED THE SAME TO BE SURVEYED AND PLATTED INTO A LOT TO BE KNOWN AS "WILDCAT RSC ADDITION", WICHITA, KANSAS. UTILITY EASEMENTS AS SHOWN ON THE PLAT ARE HEREBY GRANTED FOR THE CONSTRUCTION AND MAINTENANCE OF ALL PUBLIC UTILITIES.

SOUTHWESTERN BELL TELEPHONE COMPANY

Vance W. Liston  
VANCE W. LISTON  
DISTRICT MANAGER, REAL ESTATE MANAGEMENT  
STATE OF KANSAS)  
SHAWNEE COUNTY ) SS

THIS INSTRUMENT WAS ACKNOWLEDGED BEFORE ME THIS 6TH DAY OF June, 1990, BY VANCE W. LISTON, DISTRICT MANAGER, REAL ESTATE MANAGEMENT, FOR SOUTHWESTERN BELL TELEPHONE COMPANY, A MISSOURI CORPORATION, HAVING ITS PRINCIPAL PLACE OF BUSINESS AT 1010 PINE STREET, ST. LOUIS, MISSOURI AND AUTHORIZED TO DO BUSINESS IN THE STATE OF KANSAS, ON BEHALF OF THE CORPORATION.

Vicki L. Williams, NOTARY PUBLIC

VICKI L. WILLIAMS  
MY COMMISSION EXPIRES: 5-4-92  
THIS PLAT OF "WILDCAT RSC ADDITION", WICHITA, KANSAS, HAS BEEN SUBMITTED TO AND APPROVED BY THE WICHITA-SEDGWICK COUNTY METROPOLITAN AREA PLANNING COMMISSION, WICHITA, KANSAS.

DATED THIS 5th DAY OF March, 1990.

WICHITA-SEDGWICK COUNTY  
METROPOLITAN AREA PLANNING COMMISSION

George D. Sherman, ACTING CHAIRMAN  
GEORGE D. SHERMAN

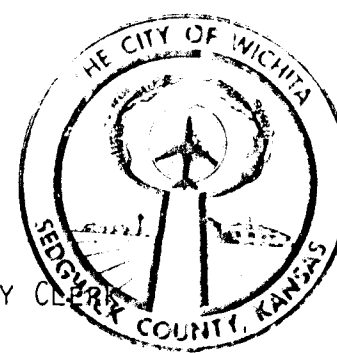
Marvin S. Krout, SECRETARY  
MARVIN S. KROUT

THIS PLAT APPROVED AND ALL DEDICATIONS SHOWN HEREON ARE ACCEPTED BY THE CITY COUNCIL OF THE CITY OF WICHITA, KANSAS, THIS 5th DAY OF June, 1990.

WICHITA CITY COUNCIL

Bob Knight, MAYOR  
BOB KNIGHT

Pat Burnett, DEPUTY CITY CLERK  
PAT BURNETT



STATE OF KANSAS)  
SEDGWICK COUNTY) SS

THIS IS TO CERTIFY THAT THIS INSTRUMENT WAS FILED FOR RECORD IN THE REGISTER OF DEEDS OFFICE ON THE \_\_\_\_\_ DAY OF \_\_\_\_\_, 1990, AT \_\_\_\_\_ O'CLOCK \_\_\_\_\_ M.

\_\_\_\_\_, REGISTER OF DEEDS  
PAT KETTLER

\_\_\_\_\_, DEPUTY  
ED RESA

ENTERED ON TRANSFER RECORD THIS \_\_\_\_\_ DAY OF \_\_\_\_\_, 1990.

\_\_\_\_\_, COUNTY CLERK  
DON WRIGHT

STATE OF KANSAS)  
SEDGWICK COUNTY) SS

TERRA TECH LAND SURVEYING, INC., A CORPORATION REGISTERED AND AUTHORIZED TO PRACTICE LAND SURVEYING IN THE STATE OF KANSAS, HEREBY CERTIFIES THAT IT HAS SURVEYED AND PLATTED "WILDCAT RSC ADDITION", WICHITA, KANSAS, AND THE ACCOMPANYING PLAT IS A TRUE AND CORRECT EXHIBIT OF SUCH SURVEY, DESCRIBED AS FOLLOWS:

A TRACT IN THE NORTHWEST QUARTER OF SECTION 28 TOWNSHIP 27 SOUTH, RANGE 2 EAST OF THE SIXTH PRINCIPAL MERIDIAN, SEDGWICK COUNTY, KANSAS, MORE PARTICULARLY DESCRIBED AS: BEGINNING 622 FEET SOUTH AND 399.8 FEET WEST OF THE NORTHEAST CORNER OF THE WEST HALF OF SAID NORTHWEST QUARTER; THENCE SOUTH A DISTANCE OF 160.08 FEET, MORE OR LESS, TO THE NORTH LINE OF "ANDEELS WEBB ROAD ADDITION"; THENCE WEST, ON SAID NORTH LINE, A DISTANCE OF 100 FEET, MORE OR LESS, TO THE EAST OF LINE OF WILDCAT LANE; THENCE NORTH, ON SAID EAST LINE, A DISTANCE OF 160.08 FEET, MORE OR LESS, TO THE SOUTHWEST CORNER OF "PAUL BURNETT SECOND ADDITION"; THENCE EAST, ON THE SOUTH LINE OF SAID ADDITION, A DISTANCE OF 100 FEET TO THE POINT OF BEGINNING.

TERRA TECH LAND SURVEYING, INC. C. WARD  
Bradley C. Ward  
BRADLEY C. WARD  
REGISTERED SURVEYOR  
KANSAS  
NO. 184920  
DATE  
JUNE 1, 1990

