

FINAL PLAT OF WILDERNESS

AN ADDITION TO WICHITA, SEDGWICK COUNTY, KANSAS

I, Michael D. Harding, a Civil Engineer in Kansas, do hereby certify that I have been in responsible charge of surveying and platting of "Wilderness", an addition to Wichita, Sedgwick County, Kansas, into lots, blocks, and reserves, the same being accurately set forth in the accompanying plat and described as follows:

A tract of land in the north half of Section 5, Township 27 South, Range 2 east of the 6th P.M., Sedgwick County, Kansas described as:

Beginning at the intersection of the south right-of-way line of 29th Street North and the west line of said northeast quarter; thence easterly along the south line of 29th Street North bearing N 89° 06' 39" E, 1278.11 feet; thence S 44° 06' 39" W, 237.28 feet to a point on a curve to the right with a central angle of 45° 00' 00", a radius of 109.00 feet, a length of 85.61 feet and a long chord of 83.43 feet bearing S 23° 23' 21" E; thence S 0° 53' 21" W, 99.00 feet; thence S 89° 06' 39" W, 148.82 feet; thence S 44° 06' 39" W, 87.95 feet; thence S 0° 53' 21" W, 126.72 feet; thence S 79° 19' 10" W, 193.57 feet to a point on a curve to the right with a central angle of 126° 03' 03", a radius of 50.00 feet, a length of 110.00 feet and a long chord of 89.12 feet bearing S 52° 20' 42" W; thence S 34° 34' 38" W, 80.00 feet; thence S 55° 23' 22" W, 43.86 feet to a point on a curve to the right with a central angle of 94° 33' 13", a radius of 262.88 feet, a length of 433.83 feet and a long chord of 386.25 feet bearing S 8° 08' 44" E; thence S 39° 07' 53" W, 304.68 feet to a point on a curve to the left with a central angle of 40° 00' 00", a radius of 174.06 feet, a length of 121.52 feet and a long chord of 119.06 feet bearing S 19° 07' 53" W; thence S 0° 52' 07" W, 110.91 feet to a point on a curve to the right with a central angle of 22° 30' 00", a radius of 308.50 feet, a length of 121.15 feet and a long chord of 120.37 feet bearing S 10° 22' 53" W; thence S 21° 37' 53" W, 70.17 feet; thence S 89° 07' 53" W, 334.55 feet; thence N 45° 52' 07" W, 160.00 feet; thence N 44° 07' 53" E, 40.00 feet to a point on the west line of the northeast quarter of said Section 5; thence N 0° 52' 07" W, 1602.61 feet to the point of beginning, containing 30.26 acres more or less.

I hereby certify that the details of this plat are correct to the best of my knowledge and belief this 25th day of July, 1983.



Michael D. Harding
Michael D. Harding, P.E.
Mid-Kansas Engineering Consultants, P.A.
240 North Rock Road, Suite 130
Wichita, Kansas 67206

Know all men by these presents that we the undersigned property owners of the land as above set forth in the Engineer's Certificate, have caused the same to be surveyed and platted into lots, blocks, streets and reserves, the same to be known as "Wilderness", an addition to Wichita, Sedgwick County, Kansas. The streets are hereby dedicated to and for the use of the public. Easements are hereby granted as indicated for the construction and maintenance of all public utilities and drainage. Reserves are platted for construction and maintenance of utilities, drainage, cart paths, recreation, buffer zones and open space and shall be owned and maintained by the Homeowners Association. The building setbacks shall be in accordance with the Tallgrass Community Unit Plan (D.P. - 96) on file in the City of Wichita, Sedgwick County Metropolitan Area Planning Department Office.

Tallgrass Company

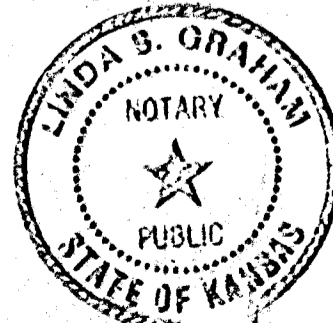
By: *W.F. Binter*
W.F. BINTER

STATE OF KANSAS
COUNTY OF SEDGWICK

Be it remembered that on this 13th day of July, 1983 before me, a Notary Public in and for said State and County, came *W.F. Binter*, on behalf of Tallgrass Company, a Partnership, to me personally known to be the same person who executed the foregoing instrument of writing and duly acknowledged the execution of the same. In testimony whereof I have hereunto set my hand and affixed my notarial seal the day and year above written.

Linda S. Graham
Notary Public

My Appointment Expires: 2-9-86



This plat approved and all dedications shown hereon, if any, accepted by the Board of County Commissioners of Sedgwick County, Kansas, this _____ day of _____, 1983.

_____, Chairman
_____, Commissioner
_____, Commissioner
_____, County Clerk
_____, County Clerk

STATE OF KANSAS
COUNTY OF SEDGWICK
This is to certify that this instrument was filed for record in the Register of Deeds Office at _____ on the _____ day of _____, 1983.

_____, Register of Deeds
_____, Deputy

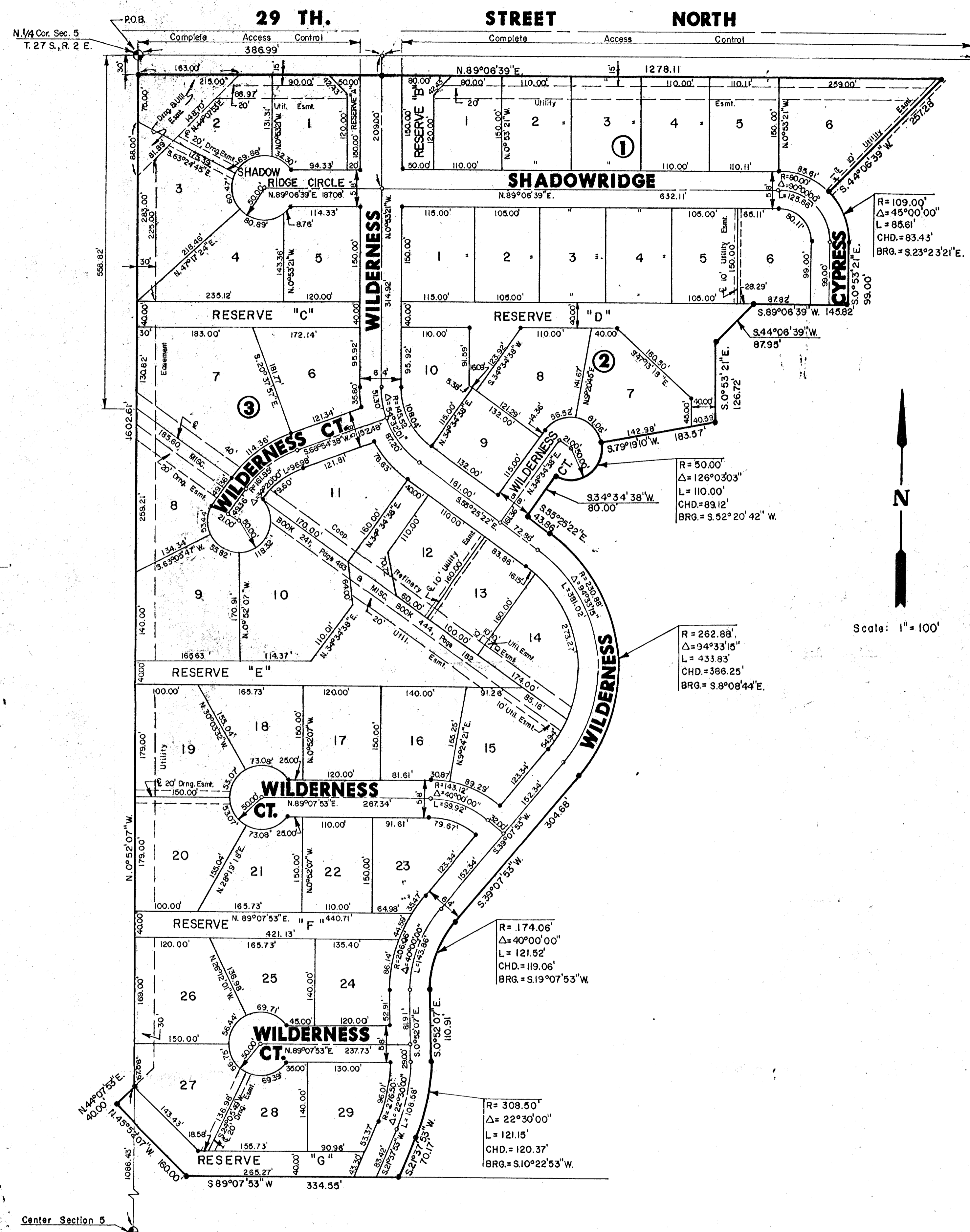
This plat of "Wilderness" has been submitted to and approved by the Wichita-Sedgwick County Metropolitan Area Planning Commission, Wichita, Kansas.

Dated this 16th day of June, 1983.
Wichita-Sedgwick County Metropolitan Area Planning Commission

David Bayouff Chairman
Robert A. Lakin Secretary

This plat approved and all dedications shown hereon, if any, accepted by the City Commission of the City of Wichita, Kansas this 26th day of _____, 1983.

Robert G. Knight Vice-Mayor
Donald C. Giesic City Clerk



Center Section 5