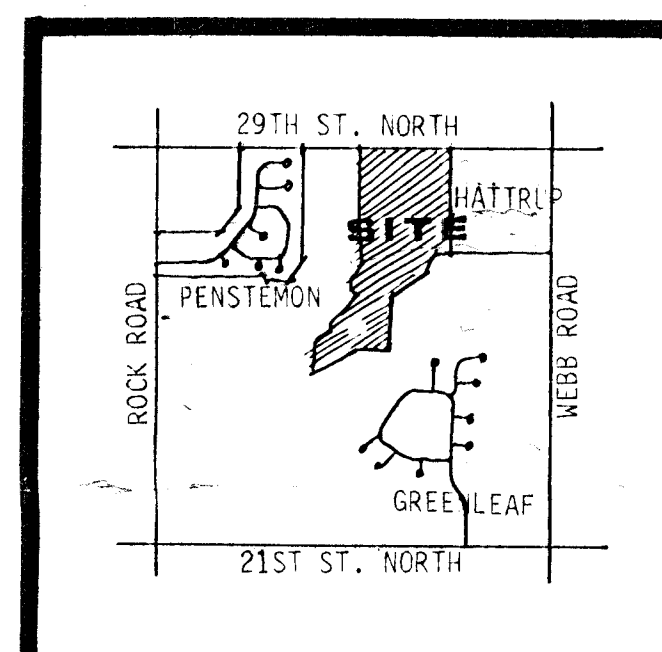
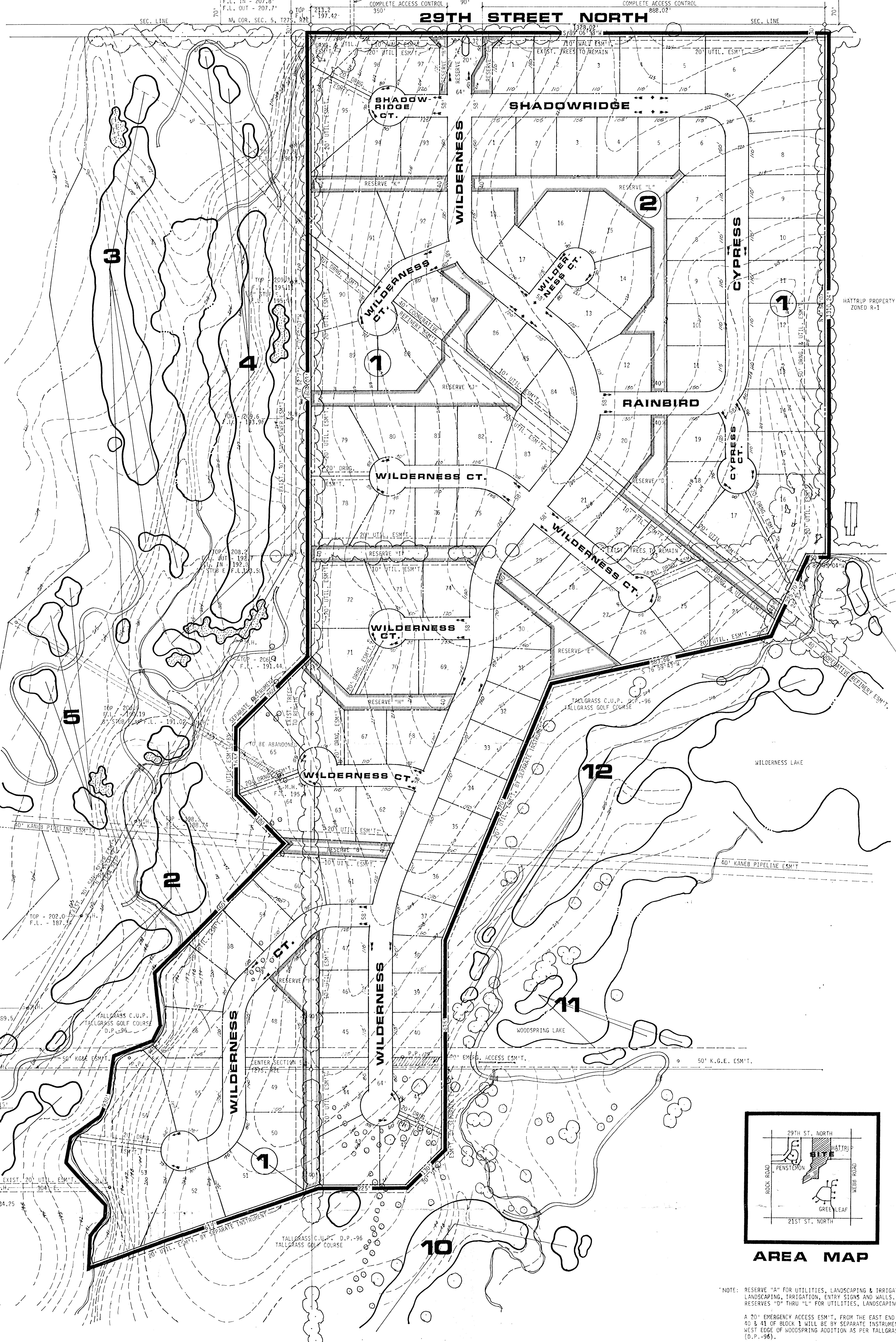


PARCEL NO. 20 C.U.P. D.P.-112
PROPOSED USES: FOUR-FLY, TOWNHOUSES,
GARDEN APARTMENTS, MID-RISE APARTMENTS

PARCEL NO. 20 C.U.P. D.P.-112
PROPOSED USES: DUPLEX, FOUR-FLY

PROPOSED BOX CULVERT - 106.73' EAST OF
NA COR. SEC. 5, T27S, R2E

COMPLETE ACCESS CONTROL



AREA MAP

NOTE: RESERVE "A" FOR UTILITIES, LANDSCAPING & IRRIGATION. RESERVES "B" AND "C" FOR UTILITIES, LANDSCAPING, IRRIGATION, ENTRY STONE AND WALLS. RESERVES "D" THRU "L" FOR UTILITIES, LANDSCAPING, DRAINAGE & IRRIGATION.

A 20' EMERGENCY ACCESS ESM'T. FROM THE EAST END OF LOTS 40 & 41 OF BLOCK 1 WILL BE BY SEPARATE INSTRUMENT, TO THE WEST EDGE OF WOODSPRING ADDITION AS PER TALLGRASS C.U.P. (D.P.-96).

A DRAINAGE CONCEPT PLAN IS TO BE PREPARED BY MID KANSAS ENGINEERING.

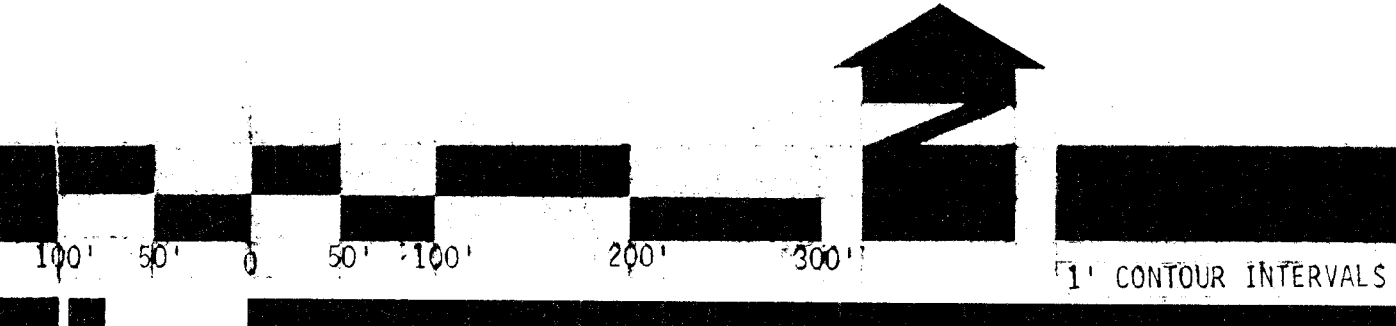
8625 POWER POLE ON NORTH R/W LINE OF 29TH ST. NORTH APPROXIMATELY 1,000 FT. WEST OF WEBB ROAD.

SETBACKS ARE AS PER GENERAL PROVISION NO. 4 TALLGRASS C.U.P. (D.P.-96).

PRELIMINARY PLAT WILDERNESS

OWNER: TALLGRASS COMPANY, P.O. BOX 4048 WICHITA, KANSAS 67203

DATE: APRIL 27, 1983



BILL G. YUNG DESIGN
8225 E. 35TH ST. NORTH, WICHITA, KS 67226 316-683-5567