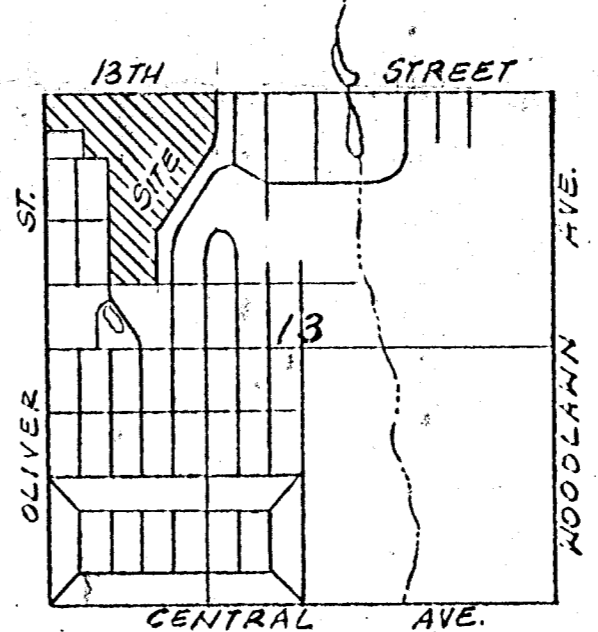


UTILITIES:  
 WATER: As shown. Also 8" Water Main (E/W) on 13th St. 15' North of N. curb line.  
 6" Water Main on W. line Pinecrest, 7' West of West curb line. (City of Wichita.)  
 TELEPHONE: As shown. Also underground conduit (N/S) on east side of Oliver; underground conduit on Esmt. on back of lots facing Pinecrest & Parkwood (S. Keith Bell)  
 GAS: (Gas Service Co.): As shown. Also 4" Gas main 6' West of east of Pinecrest-Parkwood  
 POWER: (K.G.&E) As shown.  
 SANITARY & STORM SEWER: As shown.

PRELIMINARY PLAT OF  
**WILLIAMSBURG**  
 Wichita, Sedgwick County, Kansas.

OWNER: WILLIAMSBURG PARTNERSHIP  
 c/o William E. Marin  
 555 N. Woodlawn Bldg. 1  
 Wichita, Ks.  
 ENGINEER: P.E.C. P.A.  
 1440 English  
 Wichita, Ks.



B.M. Oliver & 13th St.  
 City of Wichita Bench Mark Disc.  
 41.6' east & 33' north of centerline  
 of both. Elev. 208.204 City datum.  
 Note: For required Blodg. setbacks  
 See DP-135 & also D.P. 140

SCALE 1"=100'

Aug. 1984.

PRELIMINARY MAP OF LOTS LOCATED AT  
 N.W. 1/4 SECTION 13, 27S./1E.,  
 SEDGWICK COUNTY, KANSAS  
 P. E. C. - ALLIED LABORATORIES

