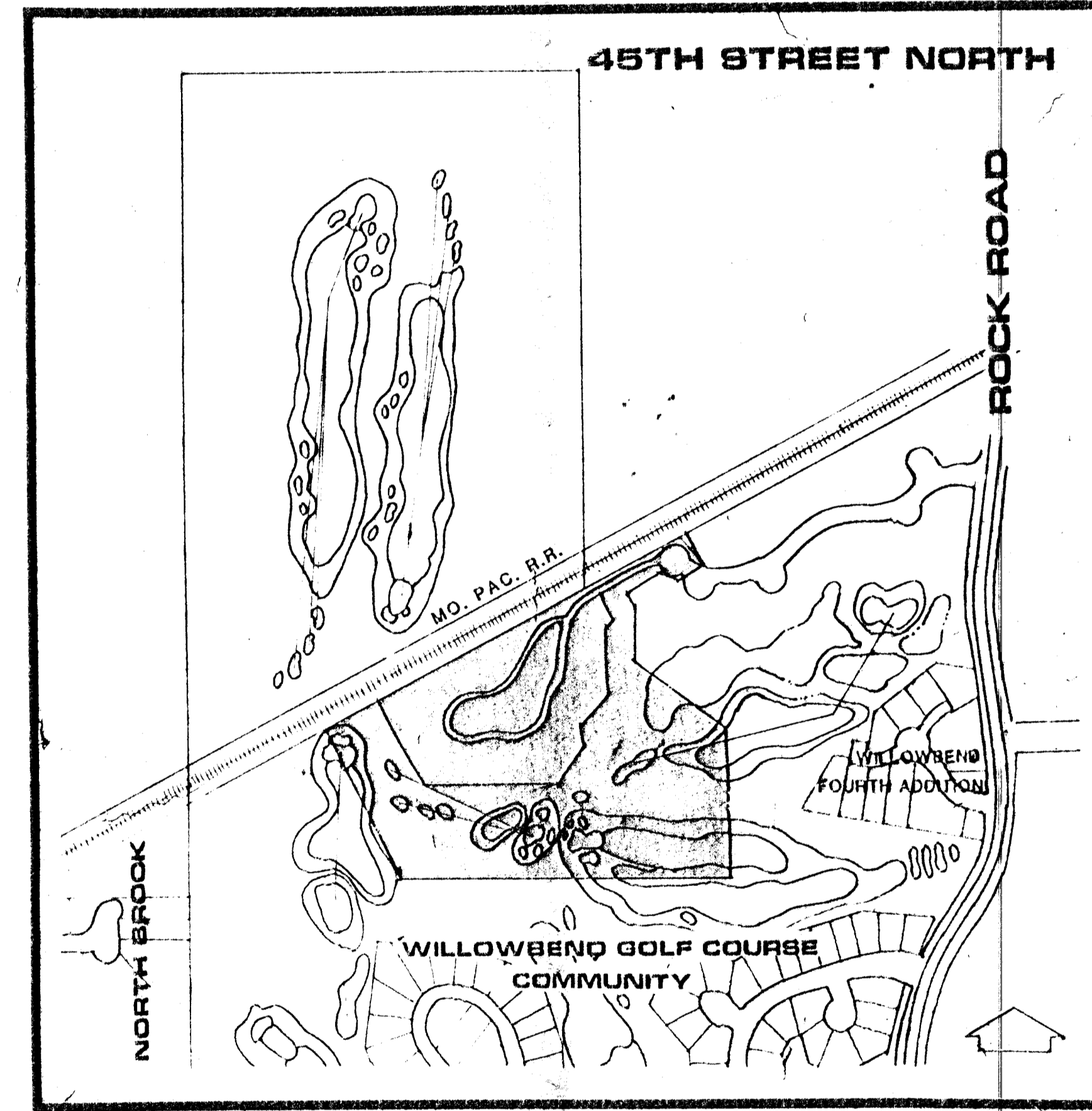
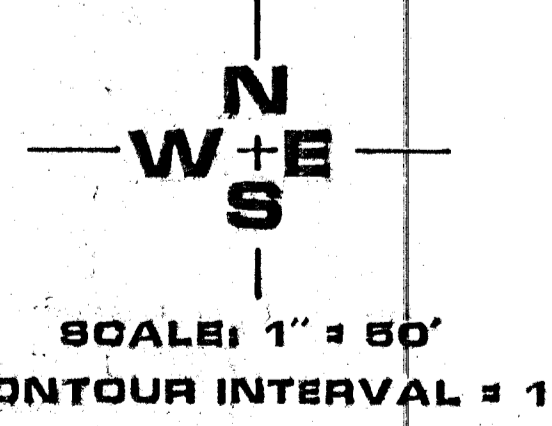


NOTES:
 BENCH MARK:
 30. CUT ON N.E. CORNER OF R.O.B. 900' N. OF E. 1/4
 COR. SECTION 30 T28S R2E ELEV. 186.38



LOCATION MAP
 SCALE: 1" = 400'



MID-KANSAS ENGINEERING CONSULTANTS PA
 3500 NORTH ROCK ROAD
 BUILDING #800
 WICHITA, KANSAS 67226 682-6561

DRAINAGE & UTILITY CONCEPT

WILLOWBEND HEIGHTS

GOLF COURSES OF AMERICA
 WILLOWBEND G.C.
 ZONED AA

GOLF COURSES OF AMERICA
 WILLOWBEND G.C.
 ZONED AA

ELMER PETERS
 ZONED R-1

GOLF COURSES OF AMERICA
 PROPOSED WILLOWBEND 5TH ADDITION
 ZONED AA

GOLF COURSES OF AMERICA
 WILLOWBEND G.C.
 ZONED AA

GOLF COURSES OF AMERICA
 WILLOWBEND G.C.
 ZONED AA

SECTION LINE

MIN. PAD REQUIRED FOR LOTS 1-25, BLOCK I

S.E. COR. N.E. 1/4
 SEC. 30, T28S, R2E

WILLOWBEND G.C.
 RESERVE "A"

WILLOWBEND G.C.
 RESERVE "A"

EXIST. LAKE
 RESERVE "A"

CART PATH

16

17

1

2

1

389'09"00"W
 1114.32'

500'51"00"E
 451.32'

859.44'

MO. PAC. R.R.

CHAMPIONS CT.

CHAMPIONS CT.

CHAMPIONS CT.

118' 10"

118' 10"

118' 10"

118' 10"

118' 10"

118' 10"

118' 10"

118' 10"

118' 10"

118' 10"

118' 10"

118' 10"

118' 10"

118' 10"

118' 10"

118' 10"

118' 10"

118' 10"

118' 10"

118' 10"

118' 10"

118' 10"

118' 10"

118' 10"

118' 10"

118' 10"

118' 10"

118' 10"

118' 10"

118' 10"

118' 10"

118' 10"

118' 10"

118' 10"

118' 10"

118' 10"

118' 10"

118' 10"

118' 10"

118' 10"

118' 10"

118' 10"

118' 10"

118' 10"

118' 10"

118' 10"

118' 10"

118' 10"

118' 10"

118' 10"

118' 10"

118' 10"

118' 10"

118' 10"

118' 10"

118' 10"

118' 10"

118' 10"

118' 10"

118' 10"

118' 10"