

CATHOLIC LIFE
1ST. ADD.

ST. JOSEPH CEMETARY ADD.

UNPLATTED
CATHOLIC DIOCESE
OF WICHITA

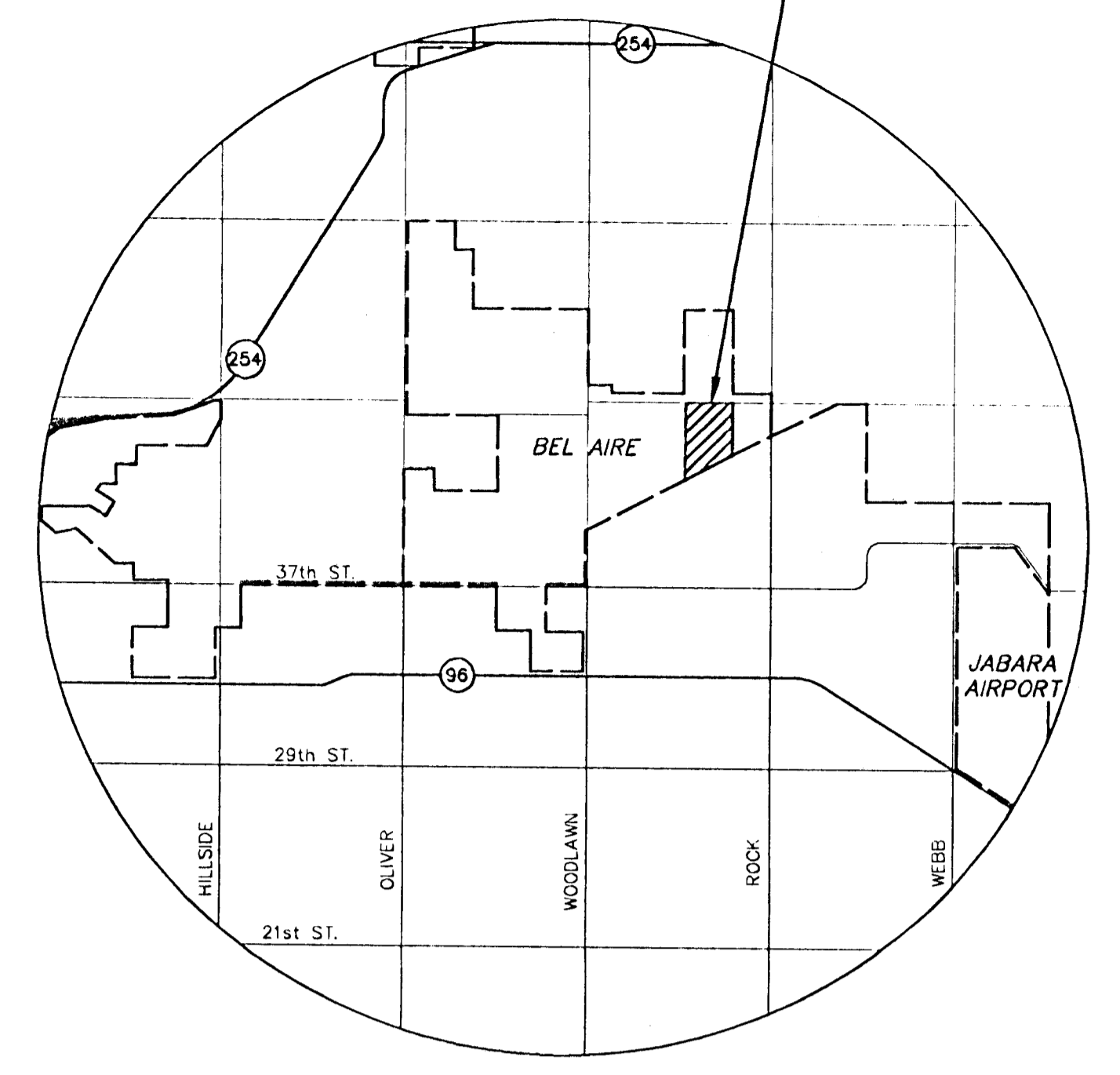
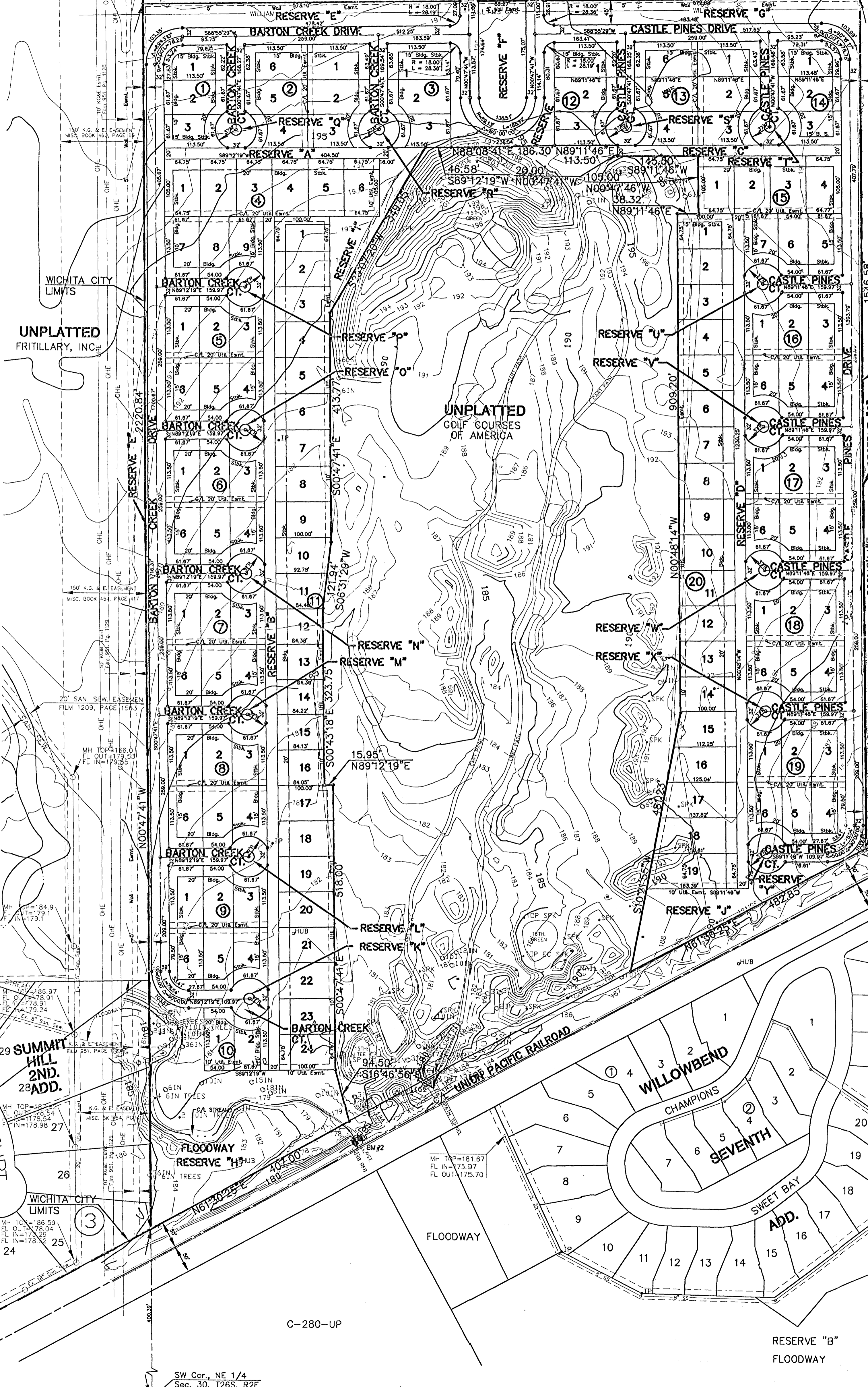
UNPLATTED
WAYNE TGADEN
PY-109

CATHOLIC DIOCESE
OF WICHITA
ZONED R-4

NW Cor., NE 1/4
Sec. 30, T26S, R2E

WICHITA CITY
LIMITS

NE Cor., NE 1/4
Sec. 30, T26S, R2E



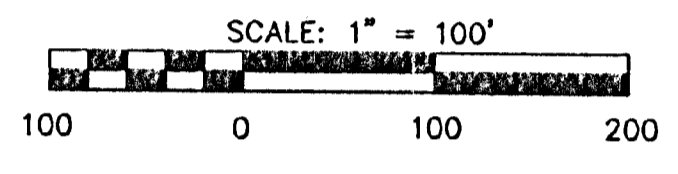
UNPLATTED
ELMER S. PETERS, JR.
ETUX
PY-BA-112

UNPLATTED
ELMER PETERS
PY-BA-113

UNPLATTED
MARY L. PETERS
c/o MARY L. &
ELMER S. PETERS TRUSTS
PY-BA-111

UNPLATTED
FREDRICK KNOWBLAUCH
PY-BA-115

UNPLATTED
MARY L. PETERS
PY-BA-114-1

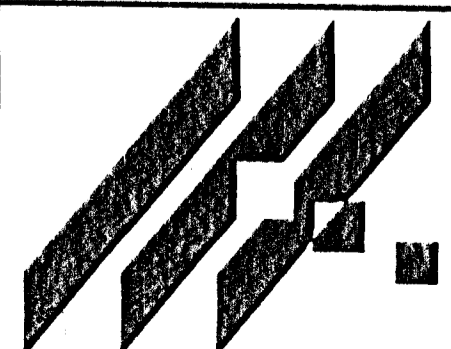


SCALE: 1" = 100'
SURVEYED: MKEC FEB., 1997
PREPARED: FEB., 1997
EXISTING ZONING: SF-6
PROPOSED ZONING: SF-6
EXISTING USE: GRASSLAND
MINIMUM PADS AS INDICATED
ON DRAINAGE PLAN
OWNER/DEVELOPER
BUILD TECH 2000
3500 N. ROCK ROAD, BLDG. 400
WICHITA, KANSAS 67226

- Reserves A, B, C and D are platted for driveways, emergency vehicle access, open space and pedestrian ways.
- Reserves H, I, J, K, L, M, N, O, P, Q, R, S, T, U, V, W and Y are platted for landscaping and open space.
- Reserves E, F and G are platted for entry monuments, landscaping and open space.
- Reserve H is platted for drainage, landscaping and open space.
- Reserves I and J are platted for landscaping and open space.

BENCHMARKS

- BM#1 "I" CUT NE COR. RCB UNDER ROCK RD. ±1740' S. OF 45TH. ST. NO. ELEV. = 186.99
- BM#2 NE COR. OF RCB UNDER UNION PACIFIC RAILROAD, ±420' NE OF INTERSECTION CENTER SEC. LINE & C/L RAILROAD. ELEV. = 185.31



WILLOWBEND NORTH
PROJECT NAME

PRELIMINARY PLAT
SHEET TITLE

MID-KANSAS ENGINEERING
CONSULTANTS, INC.
411 N WEBB ROAD
WICHITA, KS. 67206
316-684-9600

GJA
DESIGN BY:
FEB., 1997
DATE

WALJ
DRAWN BY:
96082PP
JOB NO.

GJA
CHECKED BY:
1/1
SHEET/OF

H:\C:\11\5682\PROJ\PREL1\5602PP.dwg Mon Feb 17 15:20:03 1997