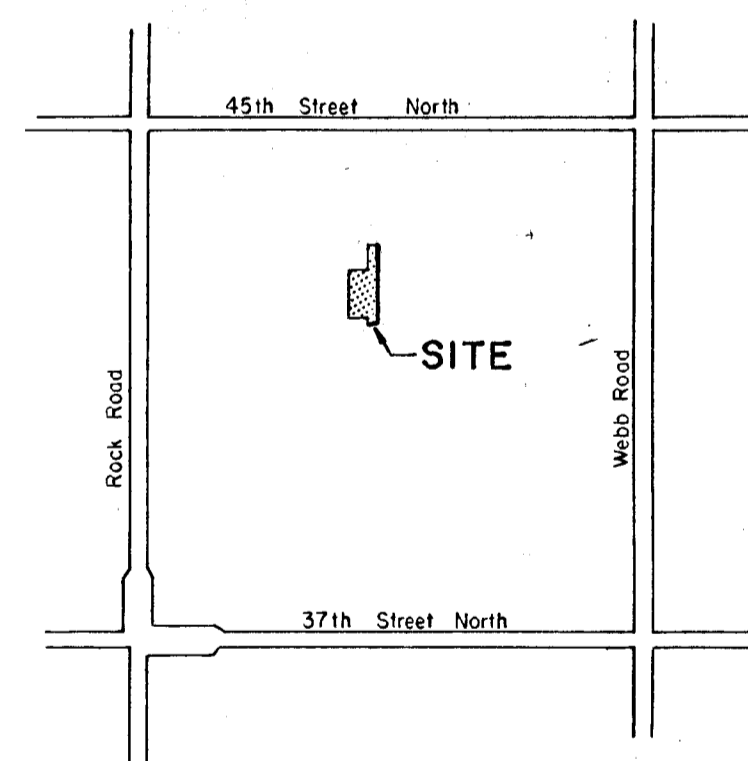
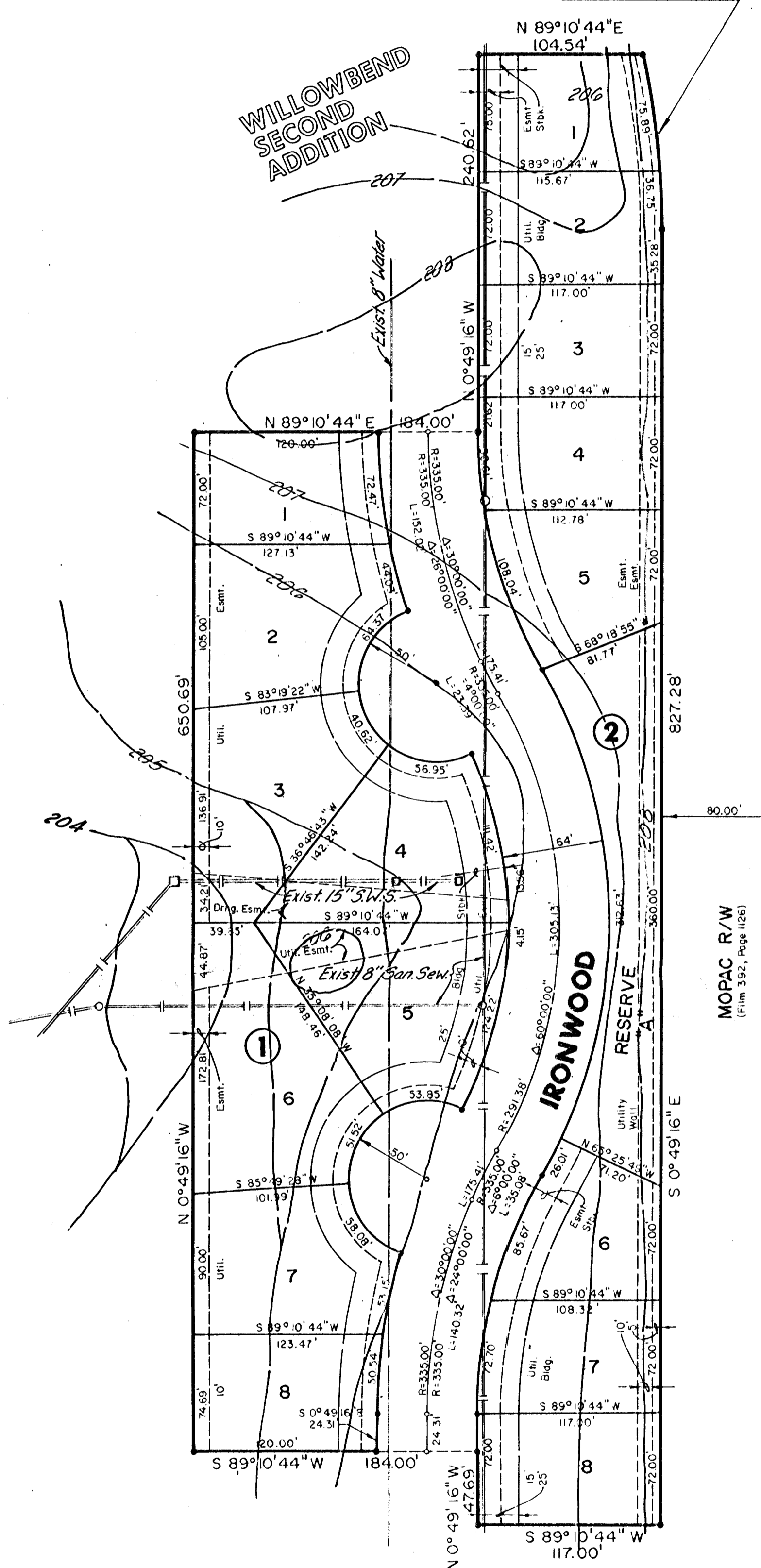
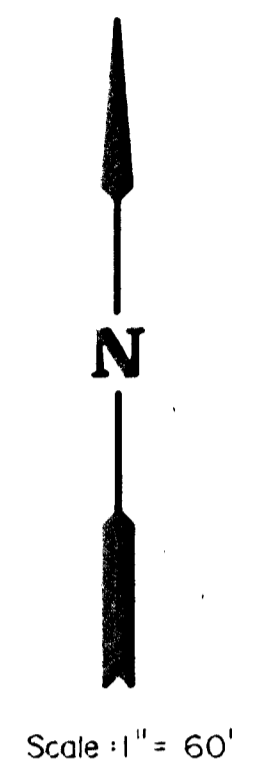


PRELIMINARY PLAT OF WILLOWBEND EIGHTH ADDITION

AN ADDITION TO WICHITA, SEDGWICK COUNTY, KANSAS
DECEMBER, 1986

R = 507.15'
 $\Delta = 12^\circ 43' 33''$
 L = 112.64'
 Brg = S 7° 11' 03" E.
 Chd. = 112.41'

N.E. Cor., N.W. 1/4, Sec. 29
 T26S., R.2E., 6th P.M.



LOCATION MAP

BENCH MARKS

- B.M. #1 "D" Cut On N.W. Corner RCB, 16' N. And 36' W. Of Center Section 29-26-2E. Elev. = 208.18
- B.M. #2 "D" Cut On N.W. Corner RCB Under R.R., Easterly Of Lot 62, Block 3, Willowbend Second. Elev. = 208.52

WILLOWBEND SECOND
ADDITION

	WILLOWBEND EIGHTH ADDITION	Design
	PRELIMINARY PLAT	Drawn by
		Checked by
		Date
		Job No.
MID-KANSAS ENGINEERING CONSULTANTS PA 3500 NORTH ROCK ROAD BUILDING #800 WICHITA, KANSAS 67226		Sheet 1 of 1
		682-6561