

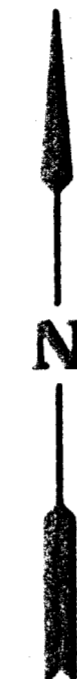
DRAINAGE & UTILITY CONCEPT

WILLOWBEND EIGHTH ADDITION

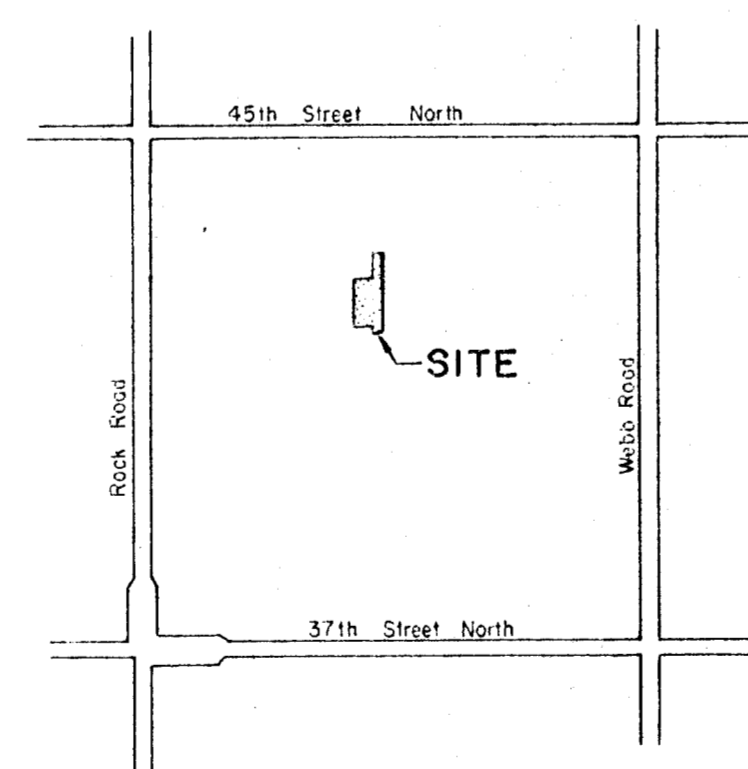
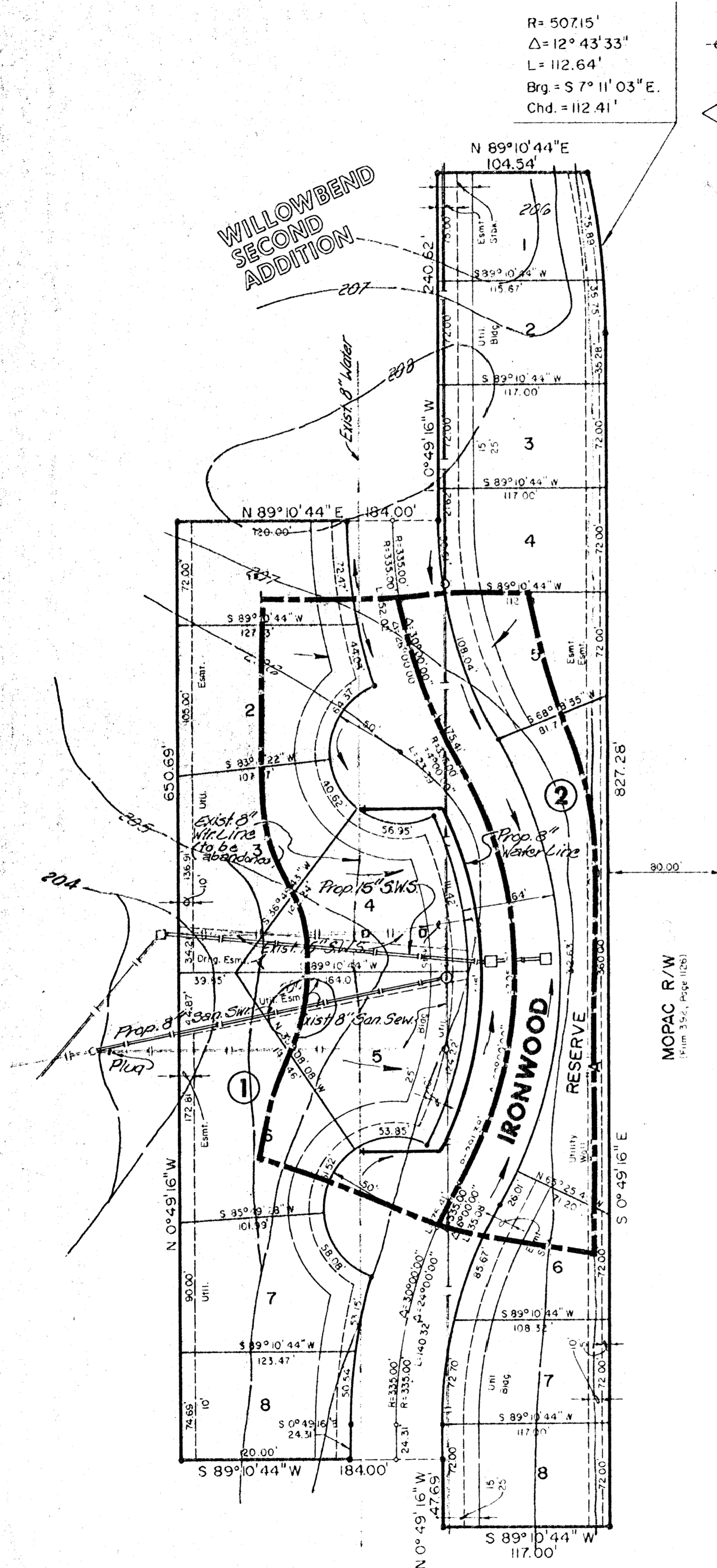
AN ADDITION TO WICHITA, SEDGWICK COUNTY, KANSAS
DECEMBER, 1986

R = 507.15'
Δ = 12° 43' 33"
L = 112.64'
Brg = S 7° 11' 03" E.
Chd. = 112.41'

N.E. Cor., N.W. 1/4, Sec. 29
T26S, R.2E., 6th P.M.



Scale 1" = 60'

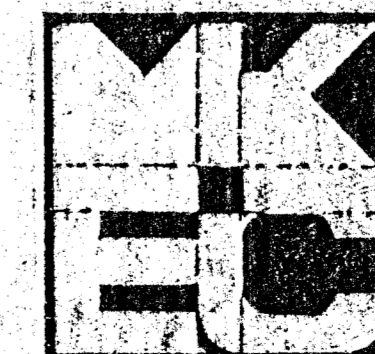


LOCATION MAP

BENCH MARKS

- B.M. # 1 "□" Cut On N.W. Corner RCB, 16' N. And 35' W. Of Center Section 29-26-2E. Elev. = 208.18
- B.M. # 2 "□" Cut On N.W. Corner RCB Under R.R., Easterly Of Lot 62, Block 3, Willowbend Second. Elev. = 208.52

WILLOWBEND SECOND ADDITION



WILLOWBEND EIGHTH ADDITION
DRAINAGE & UTILITY CONCEPT

MID-KANSAS ENGINEERING CONSULTANTS PA
3500 NORTH ROCK ROAD
BUILDING 1800
WICHITA, KANSAS 67226

482-6561

Design	
Checked By	
Drawn By	
Date	
Scale	
Sheet	1