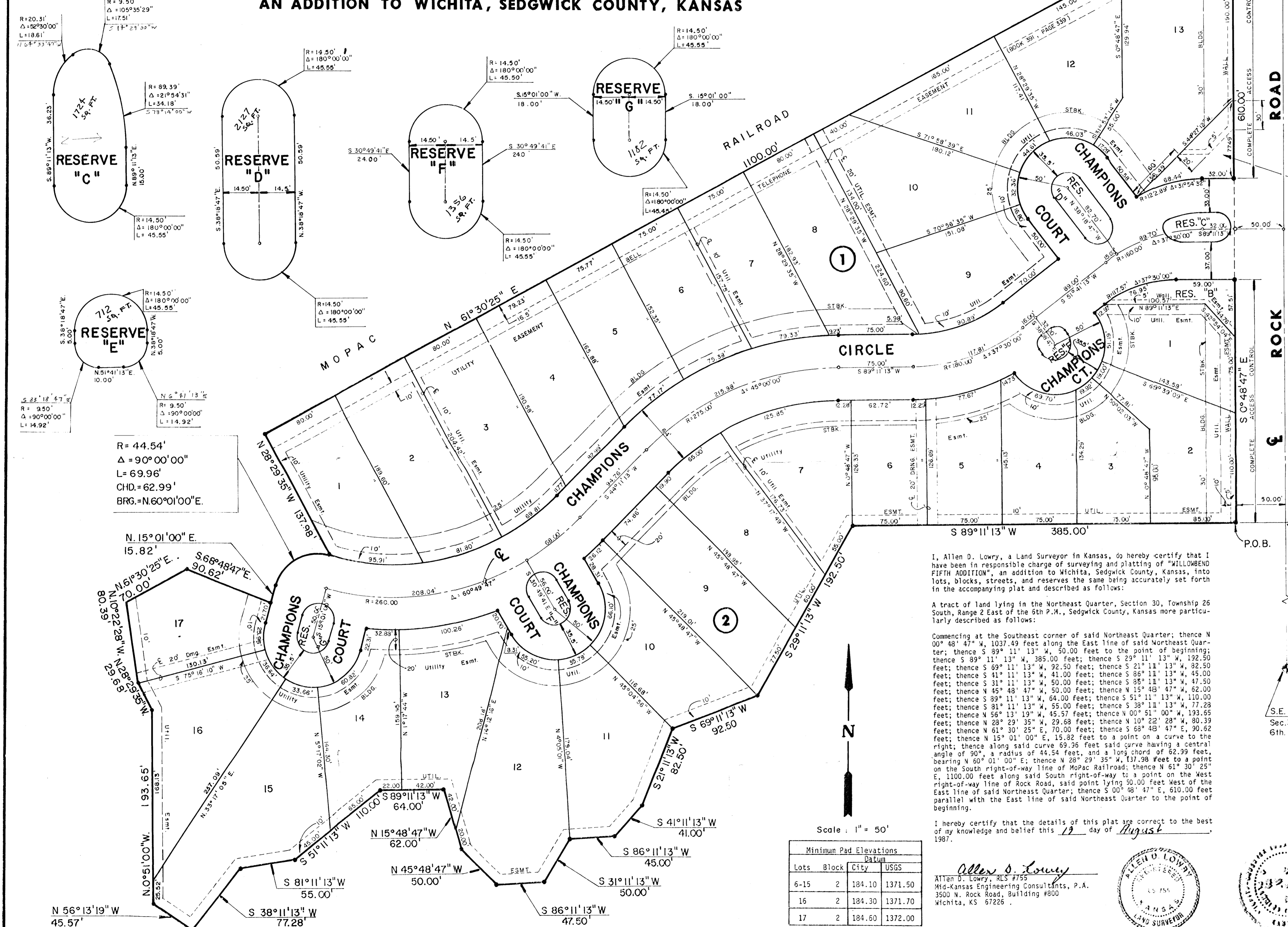


Willowbend 5th Addition

# FINAL PLAT OF WILLOWBEND FIFTH ADDITION

## AN ADDITION TO WICHITA, SEDGWICK COUNTY, KANSAS



N.E. Cor. NE 1/4  
Sec. 30, T. 26S, R. 2E.  
6th P.M.

Know all men by these presents that we the undersigned property owners of the land as above set forth in the Land Surveyors Certificate, have caused the same to be surveyed and platted into lots, blocks, streets, and reserves, the same to be known as "WILLOWBEND FIFTH ADDITION", an addition to Wichita, Sedgwick County, Kansas. The streets are hereby dedicated to and for the use of the public. Easements for the construction and maintenance of drainage and public utilities, as indicated on the accompanying plat, are hereby granted. The wall easements are for the purpose of construction and maintenance of a private wall. The reserves shall be owned and maintained by the Homeowners Association. Reserves "A" and "B" are for entry monuments, landscaping, irrigation, utilities, and walls confined to easements. Reserves "C" thru "G" are for landscaping, irrigation, and utilities. All abutters right of access to or from the West line of Rock Road over and across the East lines of Lot 13, Block 1, Lots 1 and 2, Block 2, and reserves "A" and "B", Willowbend Fifth Addition are hereby granted to the City of Wichita. Minimum pads are as shown on the face of the plat.

GOLF COURSES OF AMERICA, INC.  
By: Frank A. Mills  
Frank A. Mills, President

STATE OF KANSAS )  
                          ) SS:  
SEDGWICK COUNTY )  
Be it remembered that on this 19th day of August, 1987, before me a Notary Public in and for said State of Kansas, came Frank A. Mills, president of Golf Courses of America, Inc., to me personally known to be the same person who executed the foregoing instrument of writing and duly acknowledged the execution of the same. In testimony whereof I have hereunto set my hand and affixed my notarial seal the day and year above written.

John E. Kaufman, Notary Public  
My Appointment Expires: June 1, 1988

This plat of "WILLOWBEND FIFTH ADDITION" has been submitted to and approved by the Wichita-Sedgwick County Metropolitan Area Planning Commission, Wichita, Kansas.  
Dated this 6th day of August, 1987.

WICHITA-SEDGWICK COUNTY METROPOLITAN AREA PLANNING COMMISSION  
Wm. Ed. Dale, Vice-Chairman  
Mary Ellen Conlee  
Marvin S. Krout, Secretary

This plat approved and all dedications shown hereon, if any, accepted by the City Council of the City of Wichita, Kansas, this 6th day of August, 1987.

Robert S. Knight, Mayor  
Date E. Rea, Deputy City Clerk  
Entered on transfer record this \_\_\_\_\_ day of \_\_\_\_\_, 1987.  
Don Wright, County Clerk

STATE OF KANSAS )  
                          ) SS:  
SEDGWICK COUNTY )  
This is to certify that this instrument was filed for record in the Register of Deeds office this \_\_\_\_\_ day of \_\_\_\_\_, 1987.  
Pat Kettler, Register of Deeds

Ed Rea, Deputy  
We, the Michigan National Bank, a National banking association, do hereby consent to the plat of "WILLOWBEND FIFTH ADDITION".  
MICHIGAN NATIONAL BANK, a National banking association.

By: Phillip S. Frick  
Phillip S. Frick, Attorney-in-Fact

STATE OF KANSAS )  
                          ) SS:  
SEDGWICK COUNTY )

Be it remembered that on this 19th day of August, 1987, before me a Notary Public in and for said State and County, came Phillip S. Frick, Attorney-in-Fact, on behalf of Michigan National Bank a National banking association, to me personally known to be the same person who executed the foregoing instrument of writing and duly acknowledged the execution of the same. In testimony whereof I have hereunto set my hand and affixed my notarial seal the day and year above written.

Ruth A. Wassinger, Notary Public  
My Appointment Expires: 1-1-88

I, Allen D. Lowry, a Land Surveyor in Kansas, do hereby certify that I have been in responsible charge of surveying and platting of "WILLOWBEND FIFTH ADDITION", an addition to Wichita, Sedgwick County, Kansas, into lots, blocks, streets, and reserves the same being accurately set forth in the accompanying plat and described as follows:

A tract of land lying in the Northeast Quarter, Section 30, Township 26 South, Range 2 East of the 6th P.M., Sedgwick County, Kansas more particularly described as follows:

Commencing at the Southeast corner of said Northeast Quarter; thence N 00° 48' 47" W, 1037.49 feet along the East line of said Northeast Quarter; thence S 89° 11' 13" W, 50.00 feet to the point of beginning; thence S 89° 11' 13" W, 385.00 feet; thence S 29° 11' 13" W, 192.50 feet; thence S 89° 11' 13" W, 92.50 feet; thence S 21° 11' 13" W, 82.50 feet; thence S 41° 11' 13" W, 41.00 feet; thence S 85° 11' 13" W, 45.00 feet; thence S 31° 11' 13" W, 50.00 feet; thence S 85° 11' 13" W, 47.50 feet; thence N 45° 48' 47" W, 50.00 feet; thence N 15° 48' 47" W, 62.00 feet; thence S 89° 11' 13" W, 64.00 feet; thence S 51° 11' 13" W, 110.00 feet; thence S 81° 11' 13" W, 55.00 feet; thence S 38° 11' 13" W, 77.28 feet; thence N 56° 13' 19" W, 45.57 feet; thence N 00° 51' 00" W, 193.65 feet; thence N 28° 29' 35" W, 29.68 feet; thence N 10° 22' 28" W, 80.39 feet; thence N 61° 30' 25" E, 70.00 feet; thence S 68° 48' 47" E, 90.62 feet; thence N 15° 01' 00" E, 15.82 feet to a point on a curve to the right; thence along said curve 89.96 feet said curve having a central angle of 90°, a radius of 44.54 feet, and a long chord of 62.99 feet, bearing N 60° 01' 00" E; thence N 28° 29' 35" W, 137.98 feet to a point on the South right-of-way line of Mopac Railroad; thence N 61° 30' 25" E, 1100.00 feet along said South right-of-way to a point on the West right-of-way line of Rock Road, said point lying 50.00 feet West of the East line of said Northeast Quarter; thence S 00° 48' 47" E, 610.00 feet parallel with the East line of said Northeast Quarter to the point of beginning.

I hereby certify that the details of this plat are correct to the best of my knowledge and belief this 19 day of August, 1987.

Allen D. Lowry  
Allen D. Lowry, RLS #755  
Mid-Kansas Engineering Consultants, P.A.  
3500 N. Rock Road Building #800  
Wichita, KS 67226



Scale: 1" = 50'

Minimum Pad Elevations			
Datum			
Lots	Block	City	USGS
6-15	2	184.10	1371.50
16	2	184.30	1371.70
17	2	184.60	1372.00