

LAKESIDE GARDENS CEMETARY
EXISTING R - 1

COBBLESTONE ADDITION
EXISTING AA

13TH ST. N.

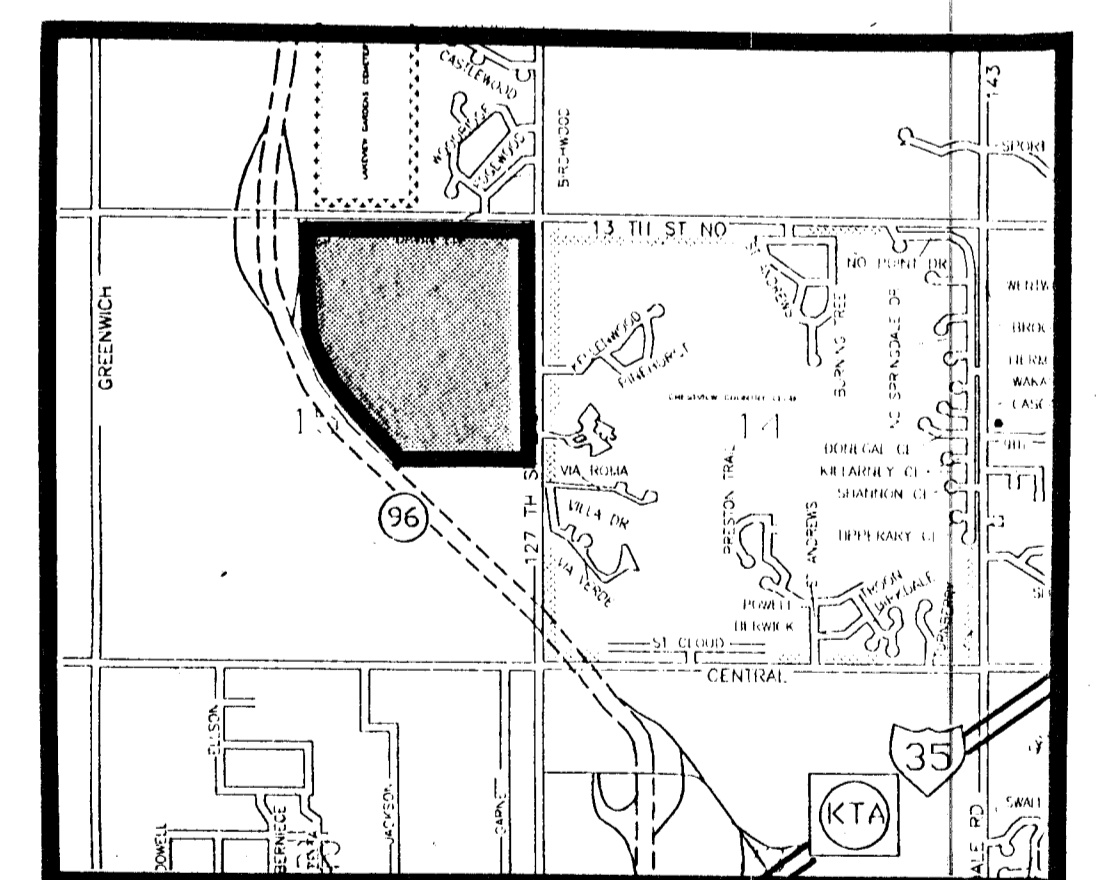
N.E. COR. SEC. 15
T27 R. 2 E



NOTES

1. RESERVES A, B, C, D, F, G, H ARE RESERVED FOR OPEN SPACE, ENTRY MONUMENTS, LIGHTING, AND WALLS, LANDSCAPING, IRRIGATION, SIDEWALKS AND UTILITIES CONFINED BY EASEMENTS. RESERVE C IS ALSO RESERVED FOR DRAINAGE IMPROVEMENTS.
2. RESERVE E IS RESERVED FOR LANDSCAPING, IRRIGATION, ENTRY MONUMENTS, LIGHTING, RECREATIONAL IMPROVEMENTS, CLUBHOUSE, POOL, SIDEWALKS, PLAYGROUND EQUIPMENT AND UTILITIES CONFINED BY EASEMENT.
3. RESERVES I - Y ARE RESERVED FOR ENTRY MONUMENTS, LIGHTING, LANDSCAPING, IRRIGATION AND UTILITIES CONFINED BY EASEMENTS.
4. DRAINAGE CONCEPT AND TOPOGRAPHY WAS PREPARED BY PROFESSIONAL ENGINEERING CONSULTANTS, INC. BENCHMARK INFORMATION TO BE SUPPLIED BY PEC.
5. LOTS 135 - 140 ARE TO BE REZONED LIGHT COMMERCIAL. INTERIOR LOTS WILL BE SERVED BY ACCESS EASEMENTS AT THE TIME OF FINAL PLAT.
6. THE SOUTHWEST CORNER OF 13TH NORTH AND 127TH EAST IS TO BE REZONED AA WITH ALL OTHER LOTS EXCEPT LOTS 135 - 140.

CRESTVIEW COUNTRY CLUB

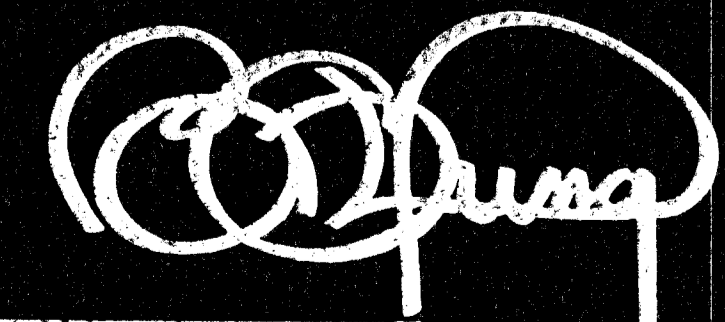
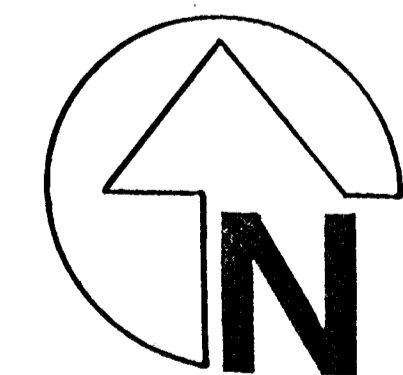


LOCATION MAP

PRELIMINARY PLAT
WHITE TAIL

OWNER: RITCHIE DEVELOPMENT, INC. 8100 E, 22ND NORTH BLD. 1000, WICHITA, KS 67226 (316) 684-7300

DATE: APRIL 19, 1993



BILL G. YUNG DESIGN
4912 E. 29TH STREET NORTH - WICHITA, KS 67220 316-683-6607