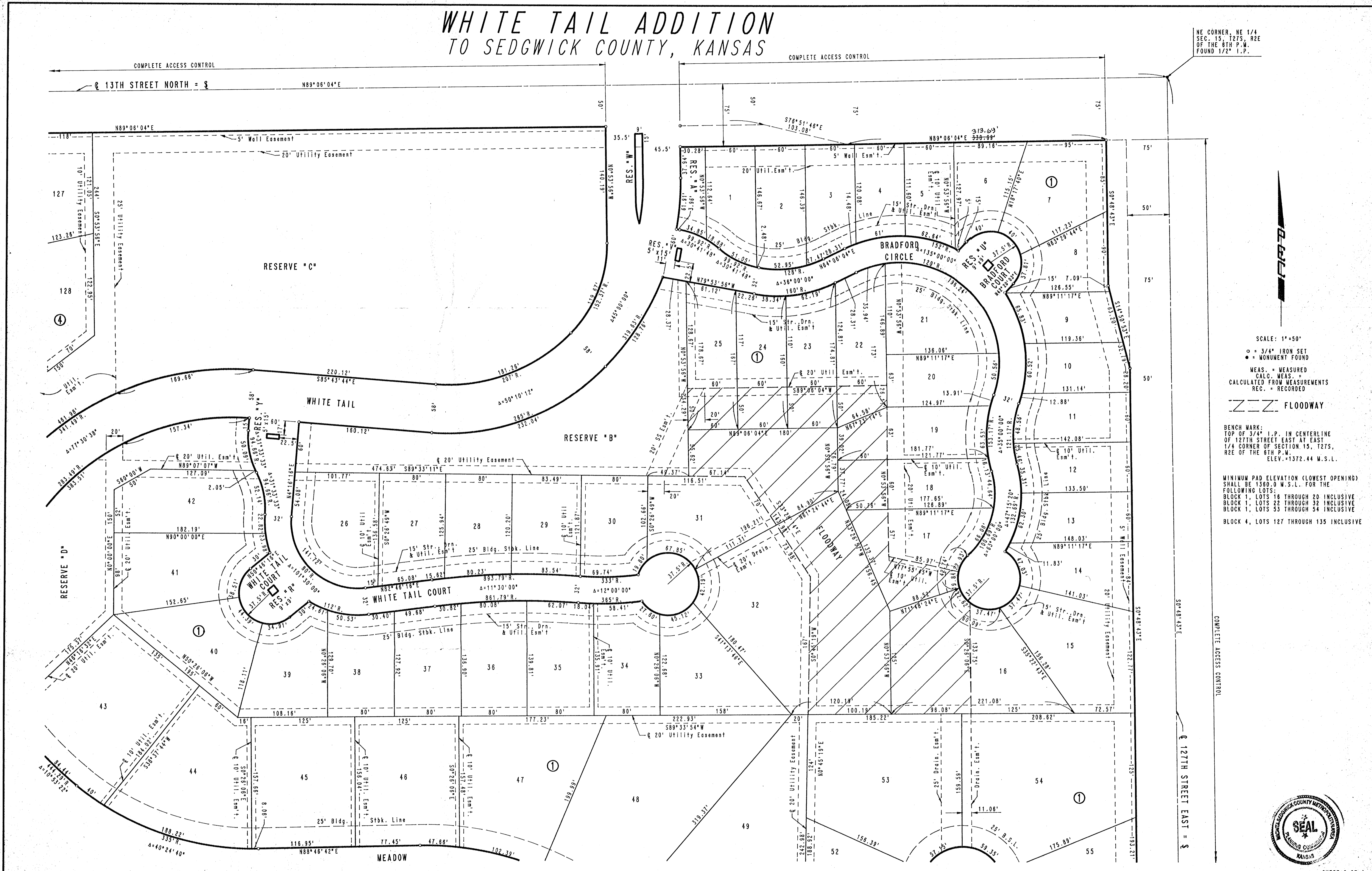


WHITE TAIL ADDITION TO SEDGWICK COUNTY, KANSAS

NE CORNER, NE 1/4
SEC. 15, T27S, R2E
OF THE 6TH P.M.
FOUND 1/2" I.P.



SCALE: 1" = 50'
 ○ = 3/4" IRON SET
 ● = MONUMENT FOUND
 MEAS. = MEASURED
 CALC. MEAS. = CALCULATED FROM MEASUREMENTS
 REC. = RECORDED
 FLOODWAY

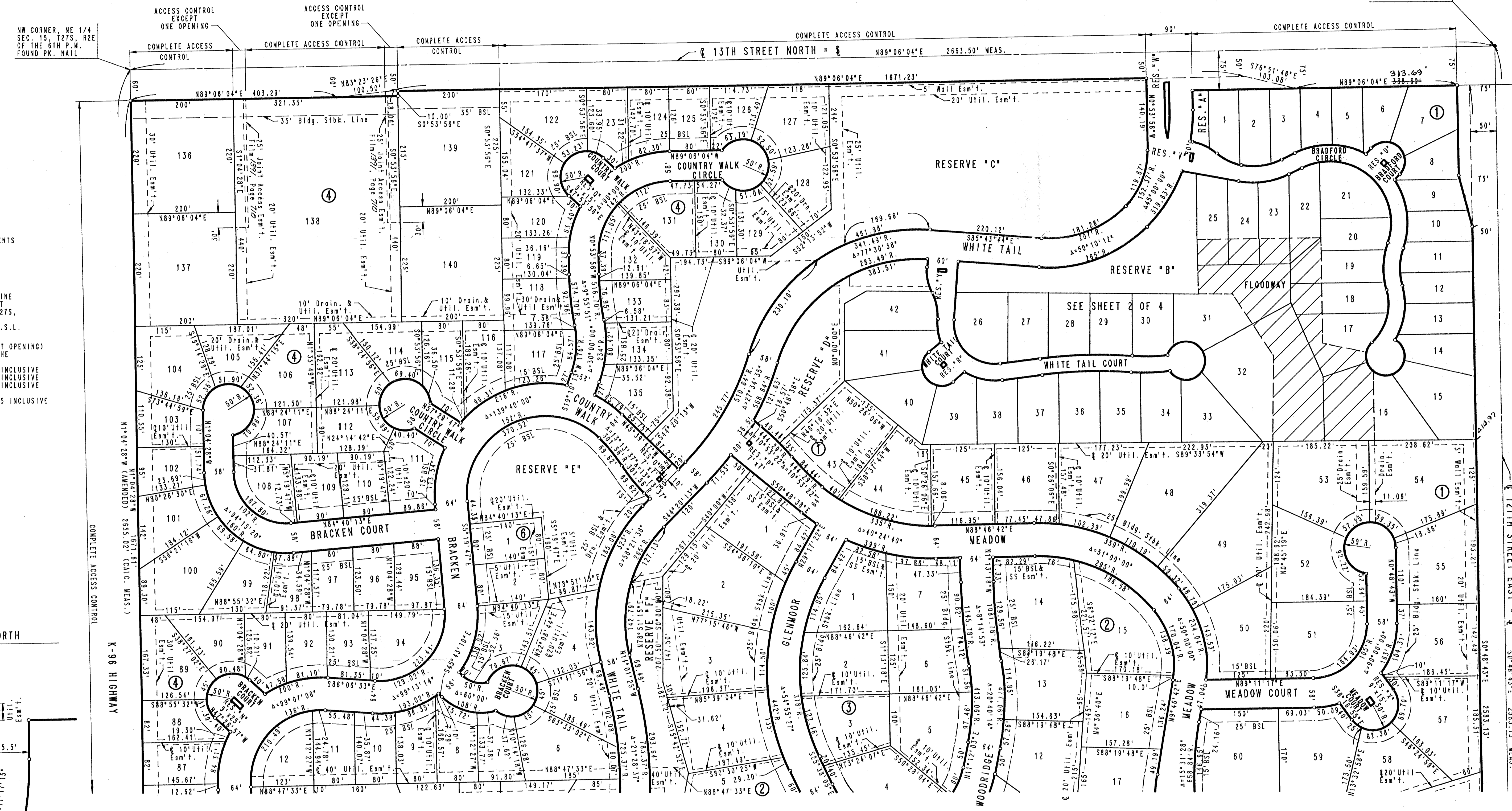
BENCH MARK:
 TOP OF 3/4" I.P. IN CENTERLINE
 OF 127TH STREET EAST AT EAST
 1/4 CORNER OF SECTION 15, T27S,
 R2E OF THE 6TH P.M.
 ELEV. = 1372.44 W.S.L.

MINIMUM PAD ELEVATION (LOWEST OPENING)
 SHALL BE 1360.0 W.S.L. FOR THE
 FOLLOWING LOTS:
 BLOCK 1, LOTS 16 THROUGH 20 INCLUSIVE
 BLOCK 1, LOTS 22 THROUGH 32 INCLUSIVE
 BLOCK 1, LOTS 53 THROUGH 54 INCLUSIVE
 BLOCK 4, LOTS 127 THROUGH 135 INCLUSIVE



WHITE TAIL ADDITION TO SEDGWICK COUNTY, KANSAS

NE CORNER, NE 1/4
SEC. 15, T27S, R2E
OF THE 6TH P.M.
FOUND 1/2" I.P.



SCALE: 1"=100'

- = 3/4" IRON SET
- = MONUMENT FOUND
- MEAS. = MEASURED
- CALC. MEAS. = CALCULATED FROM MEASUREMENTS
- REC. = RECORDED

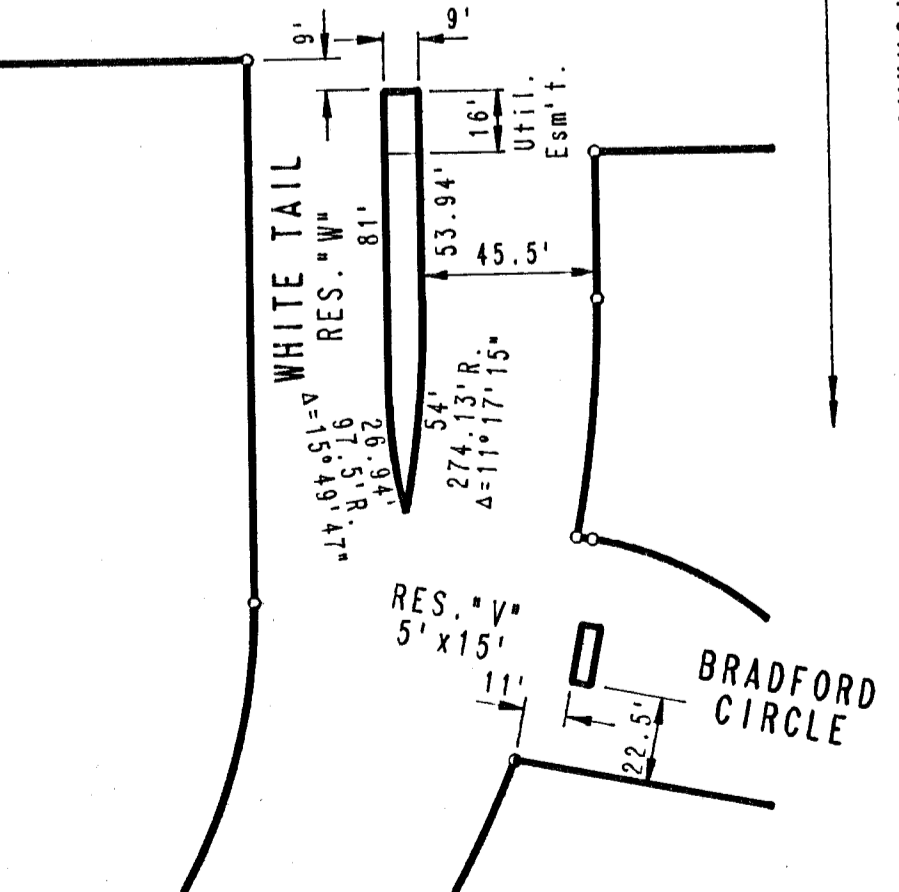
BSL = BUILDING SETBACK LINE
SS = SANITARY SEWER

BENCH MARK:
TOP OF 3/4" I.P. IN CENTERLINE
OF 127TH STREET EAST AT EAST
1/4 CORNER OF SECTION 15, T27S,
R2E OF THE 6TH P.M.
ELEV. = 1372.44 W.S.L.

MINIMUM PAD ELEVATION (LOWEST OPENING)
SHALL BE 1360.0 W.S.L. FOR THE
FOLLOWING LOTS:
BLOCK 1, LOTS 16 THROUGH 20 INCLUSIVE
BLOCK 1, LOTS 22 THROUGH 32 INCLUSIVE
BLOCK 1, LOTS 53 THROUGH 54 INCLUSIVE
BLOCK 4, LOTS 127 THROUGH 135 INCLUSIVE

13TH STREET NORTH

K-96 HIGHWAY



WHITE TAIL ADDITION TO SEDGWICK COUNTY, KANSAS

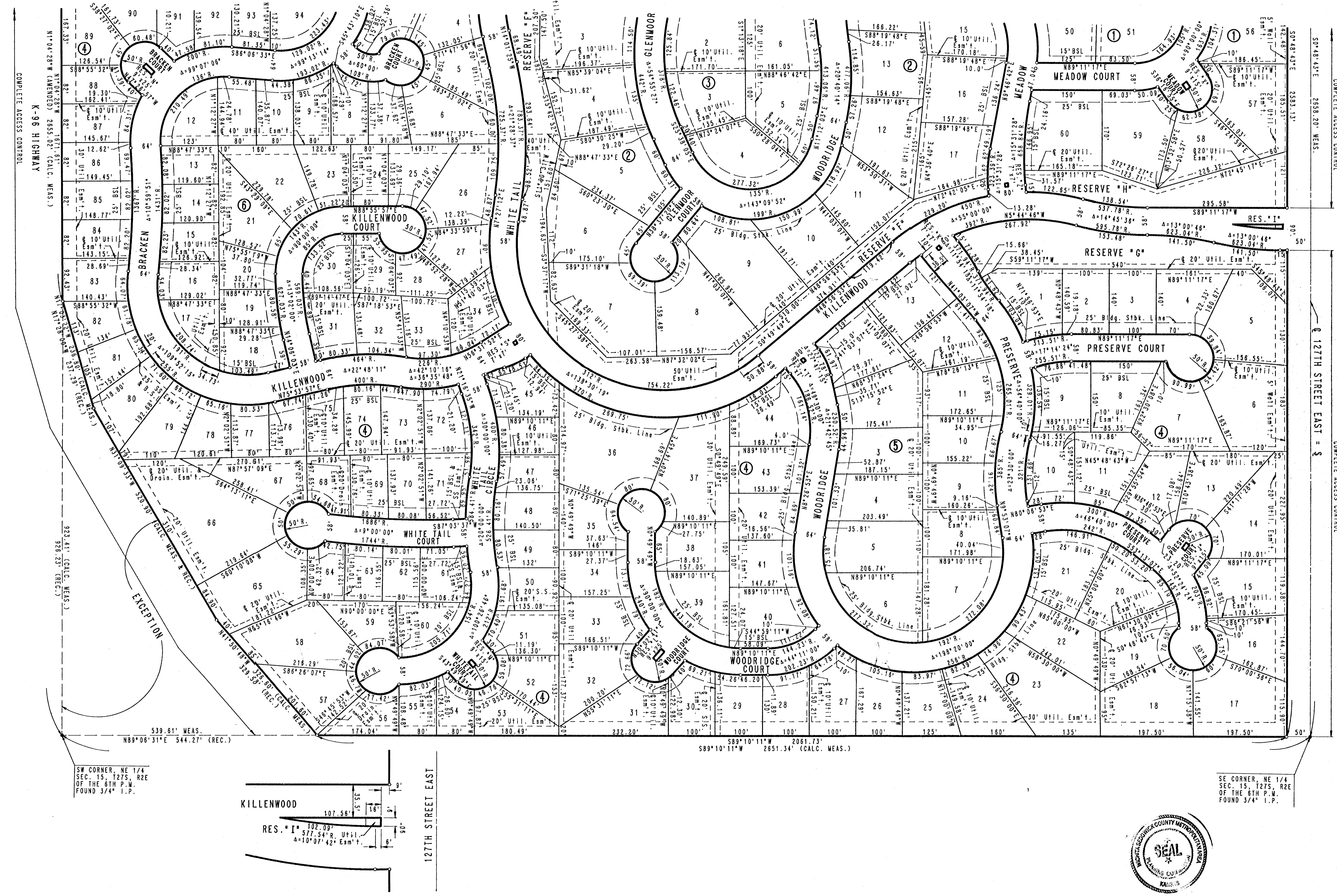
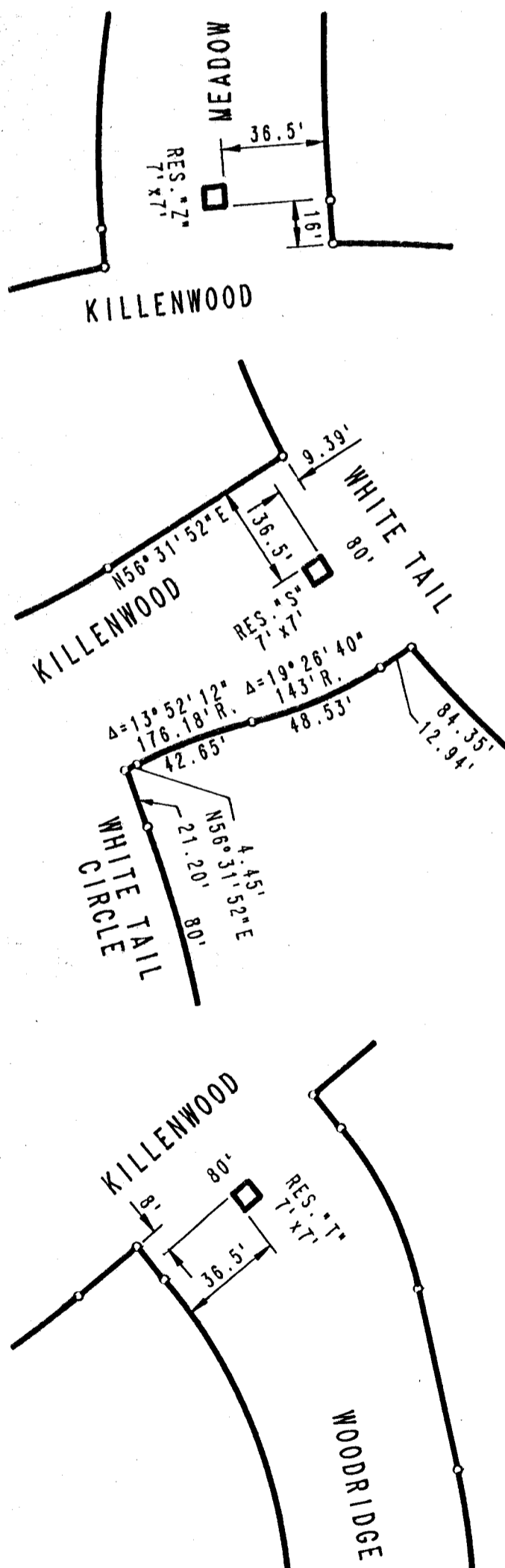
SCALE: 1"=100'

- = 3/4" IRON SET
- = MONUMENT FOUND
- MEAS. = MEASURED
- CALC. MEAS. = CALCULATED FROM MEASUREMENTS
- REC. = RECORDED

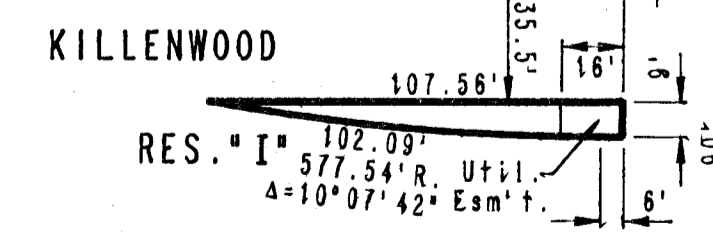
BSL = BUILDING SETBACK LINE
SS = SANITARY SEWER

BENCH MARK:
TOP OF 3/4" I.P. IN CENTERLINE
OF 127TH STREET EAST AT EAST
1/4 CORNER OF SECTION 15, T27S,
R2E OF THE 6TH P.M.
ELEV. = 1372.44 M.S.L.

MINIMUM PAD ELEVATION (LOWEST OPENING)
SHALL BE 1380.0 M.S.L. FOR THE
FOLLOWING LOTS:
BLOCK 1, LOTS 18 THROUGH 20 INCLUSIVE
BLOCK 2, LOTS 22 THROUGH 32 INCLUSIVE
BLOCK 3, LOTS 53 THROUGH 54 INCLUSIVE
BLOCK 4, LOTS 127 THROUGH 135 INCLUSIVE



SW CORNER, NE 1/4
SEC. 15, T27S, R2E
OF THE 6TH P.M.
FOUND 3/4" I.P.



SE CORNER, NE 1/4
SEC. 15, T27S, R2E
OF THE 6TH P.M.
FOUND 3/4" I.P.

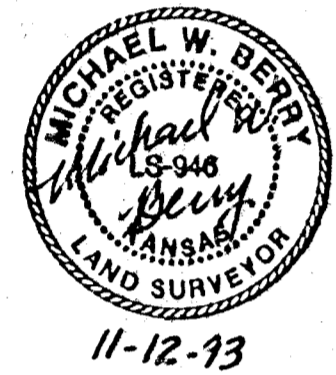


WHITE TAIL ADDITION TO SEDGWICK COUNTY, KANSAS

STATE OF KANSAS)
) SS
COUNTY OF SEDGWICK)

I, MICHAEL W. BERRY, A REGISTERED LAND SURVEYOR IN AFORESAID STATE AND COUNTY, DO HEREBY CERTIFY THAT ON THIS 21th DAY OF November, 1993, I HAVE CAUSED TO BE SURVEYED AND PLATTED WHITE TAIL ADDITION TO SEDGWICK COUNTY, KANSAS, INTO LOTS, BLOCKS, STREETS AND RESERVES. THE SAME BEING DESCRIBED AS THE NORTHEAST QUARTER OF SECTION 15, TOWNSHIP 27 SOUTH, RANGE 2 EAST OF THE 6TH P.M. EXCEPT FOR EXISTING RIGHT-OF-WAY ON THE NORTH AND EAST SIDES OF SAID NORTHEAST QUARTER AND EXCEPT A TRACT OF LAND DESCRIBED AS: COMMENCING FROM THE NORTHWEST CORNER OF SAID NORTHEAST QUARTER; THENCE BEARING S01°04'28"E ALONG THE WEST LINE OF SAID NORTHEAST QUARTER FOR A DISTANCE OF 1731.61 FEET TO THE POINT OF BEGINNING; THENCE CONTINUING S01°04'28"E ALONG SAID WEST LINE FOR A DISTANCE OF 923.41 FEET TO THE SOUTHWEST CORNER OF SAID NORTHEAST QUARTER; THENCE BEARING N89°10'11"E ALONG THE SOUTH LINE OF SAID NORTHEAST QUARTER FOR A DISTANCE OF 539.81 FEET; THENCE N41°50'48"W FOR A DISTANCE OF 326.80 FEET; THENCE N31°09'33"W FOR A DISTANCE OF 520.90 FEET; THENCE N1°03'22"W FOR A DISTANCE OF 236.80 FEET TO THE POINT OF BEGINNING.

THE UTILITY EASEMENT AS PER FILM 475, PAGE 1255, WITHIN THE ABOVE DESCRIBED TRACT IS HEREBY VACATED BY VIRTUE OF K.S.A. 12-512(B) AMENDED.



Michael W. Berry
MICHAEL W. BERRY, R.L.S. NO. 946
PROFESSIONAL ENGINEERING CONSULTANTS, P.A.

KNOW ALL MEN BY THESE PRESENTS THAT WE, THE UNDERSIGNED PROPERTY OWNERS OF THE LAND AS ABOVE SET FORTH IN THE SURVEYOR'S CERTIFICATE, HAVE CAUSED THE LAND TO BE SURVEYED AND PLATTED INTO LOTS, BLOCKS, STREETS AND RESERVES. THE SAME TO BE KNOWN AS WHITE TAIL ADDITION TO SEDGWICK COUNTY, KANSAS.

EASEMENTS AS INDICATED FOR THE CONSTRUCTION AND MAINTENANCE OF PUBLIC UTILITIES, STREETS AND DRAINAGE ARE HEREBY GRANTED.

THE FIVE-FOOT WALL EASEMENT ALONG THE NORTH AND EAST LINES OF THIS PLAT, AS SHOWN, IS HEREBY PLATTED FOR THE CONSTRUCTION AND MAINTENANCE OF A PRIVATE WALL. UTILITIES AND DRAINAGE MAY CROSS THE WALL EASEMENTS.

THE STREETS ARE HEREBY DEDICATED TO AND FOR THE USE OF THE PUBLIC.

THE FLOODWAY LOCATED IN LOTS 16 THROUGH 25 INCLUSIVE, LOT 31, AND LOT 32 IN BLOCK 1 SHALL BE THE RESPONSIBILITY OF THE OWNERS OF SAID LOTS UNTIL SUCH TIME AS THE GOVERNING BODY EXERCISING JURISDICTION ELECTS TO ASSUME THE RESPONSIBILITY FOR THE MAINTENANCE AND IMPROVEMENT OF THE FLOODWAY, PROVIDED FURTHER THAT NO STRUCTURES SHALL BE CONSTRUCTED ON OR WITHIN SAID FLOODWAY, NOR SHALL ANY FILL, CHANGE OF GRADE, CREATION OF CHANNEL OR OTHER WORK BE CARRIED ON WITHOUT THE PERMISSION OF THE APPROPRIATE ENGINEER.

RESERVE A IS HEREBY PLATTED FOR OPEN SPACE, ENTRY MONUMENT, LIGHTING, WALLS, LANDSCAPING, IRRIGATION, SIDEWALKS, UTILITIES AND DRAINAGE IMPROVEMENTS.

RESERVES B, C, D, F, G, H ARE HEREBY PLATTED FOR OPEN SPACE, ENTRY MONUMENTS, LIGHTING, WALLS, LANDSCAPING, IRRIGATION, SIDEWALKS AND UTILITIES CONFINED TO EASEMENTS. RESERVES B, C, D, F AND G ARE ALSO HEREBY PLATTED FOR DRAINAGE IMPROVEMENTS.

RESERVE E IS HEREBY PLATTED FOR LANDSCAPING, IRRIGATION, ENTRY MONUMENTS, LIGHTING, RECREATIONAL IMPROVEMENTS, CLUBHOUSE, POOL, SIDEWALKS, PLAYGROUND EQUIPMENT, AND FOR DRAINAGE AND UTILITIES CONFINED TO EASEMENTS.

RESERVES I THROUGH Z ARE HEREBY PLATTED FOR ENTRY MONUMENTS, LIGHTING, LANDSCAPING AND IRRIGATION. RESERVE I AND W ARE ALSO HEREBY PLATTED FOR DRAINAGE IMPROVEMENTS AND FOR UTILITIES CONFINED TO EASEMENTS.

RESERVES A THROUGH Z SHALL BE SUBJECT TO RESTRICTIVE COVENANTS ESTABLISHED BY THE DECLARATION OF HOMEOWNERS ASSOCIATION AGREEMENTS AND SHALL BE OWNED AND MAINTAINED BY ONE OR MORE HOMEOWNERS' ASSOCIATIONS TO BE FORMED WITHIN WHITE TAIL ADDITION TO SEDGWICK COUNTY, KANSAS.

MINIMUM PAD ELEVATION (LOWEST OPENING) SHALL BE 1360.0 M.S.L.

FOR THE FOLLOWING LOTS:

BLOCK 1, LOTS 18 THROUGH 20 INCLUSIVE
BLOCK 1, LOTS 22 THROUGH 32 INCLUSIVE
BLOCK 1, LOTS 53 THROUGH 54 INCLUSIVE

BLOCK 4, LOTS 127 THROUGH 135 INCLUSIVE

ALL ADJUTTERS' RIGHTS OF ACCESS TO AND FROM K-98 HIGHWAY, 13TH STREET NORTH AND 127TH STREET EAST OVER AND ACROSS THE WEST LINE OF BLOCK 4, THE NORTH LINES OF BLOCKS 1 AND 4 AND THE EAST LINE OF BLOCKS 1 AND 4 ARE HEREBY GRANTED TO THE APPROPRIATE GOVERNING BODY, PROVIDED HOWEVER THAT LOTS 136 THROUGH 140 IN BLOCK 4 SHALL HAVE ACCESS TO 13TH STREET NORTH AT TWO LOCATIONS AS SHOWN. ALL LOCATIONS TO BE DETERMINED BY THE APPROPRIATE ENGINEER.

OWNER: RITCHIE DEVELOPMENT CORPORATION

BY *[Signature]*
JACK D. RITCHIE, C.E.O.

STATE OF KANSAS)
) SS
COUNTY OF SEDGWICK)

BE IT REMEMBERED THAT ON THIS 21th DAY OF November, 1993, BEFORE ME, A NOTARY PUBLIC IN AFORESAID STATE AND COUNTY, CAME JACK D. RITCHIE, CHIEF EXECUTIVE OFFICER OF RITCHIE DEVELOPMENT CORPORATION, TO ME PERSONALLY KNOWN TO BE THE SAME PERSON WHO EXECUTED THE FOREGOING INSTRUMENT OF WRITING AND DULY ACKNOWLEDGED THE EXECUTION OF SAME AS THE VOLUNTARY ACT AND DEED OF SAID CORPORATION, IN TESTIMONY WHEREOF I HAVE HERUNTO SET MY HAND AND AFFIXED MY NOTARIAL SEAL THE DAY AND YEAR ABOVE WRITTEN.

[Signature], NOTARY PUBLIC

MY COMMISSION EXPIRES Jan 15, 1997



THIS PLAT HAS BEEN SUBMITTED TO AND APPROVED BY THE WICHITA-SEGWICK COUNTY METROPOLITAN AREA PLANNING COMMISSION, WICHITA, KANSAS, DATED THIS _____ DAY OF _____, 1993.

_____, CHAIRMAN
JAMES D. WINER

_____, SECRETARY
WARVIN S. KROUT

THIS PLAT APPROVED AND ALL DEDICATIONS SHOWN HEREON ARE ACCEPTED BY THE CITY COUNCIL OF THE CITY OF WICHITA, KANSAS, DATED THIS _____ DAY OF _____, 1993.

_____, MAYOR
ELWA BROADFOOT

_____, DEPUTY CITY CLERK
PAT BURNETT

THIS PLAT APPROVED AND ALL DEDICATIONS SHOWN HEREON ARE ACCEPTED BY THE BOARD OF COUNTY COMMISSIONERS OF SEDGWICK COUNTY, KANSAS, THIS _____ DAY OF _____, 1993.

_____, CHAIRMAN
MARK F. SCHROEDER

_____, CHAIR PRO TEM
BETSY GWIN

_____, COMMISSIONER
PAUL W. HANCOCK

_____, COMMISSIONER
THOMAS G. WINTERS

_____, COMMISSIONER
ANDREW L. BIAS

_____, COUNTY CLERK
SUSAN E. CROCKETT-SPOON

ENTERED ON TRANSFER RECORD THIS _____ DAY OF _____, 1993.

_____, COUNTY CLERK
SUSAN E. CROCKETT-SPOON

THIS IS TO CERTIFY THAT THIS INSTRUMENT WAS FILED FOR RECORD IN THE REGISTER OF DEEDS OFFICE AT _____ M., ON THIS _____ DAY OF _____, 1993.

_____, REGISTER OF DEEDS
PAT KETTLER

_____, DEPUTY
ED RESA

