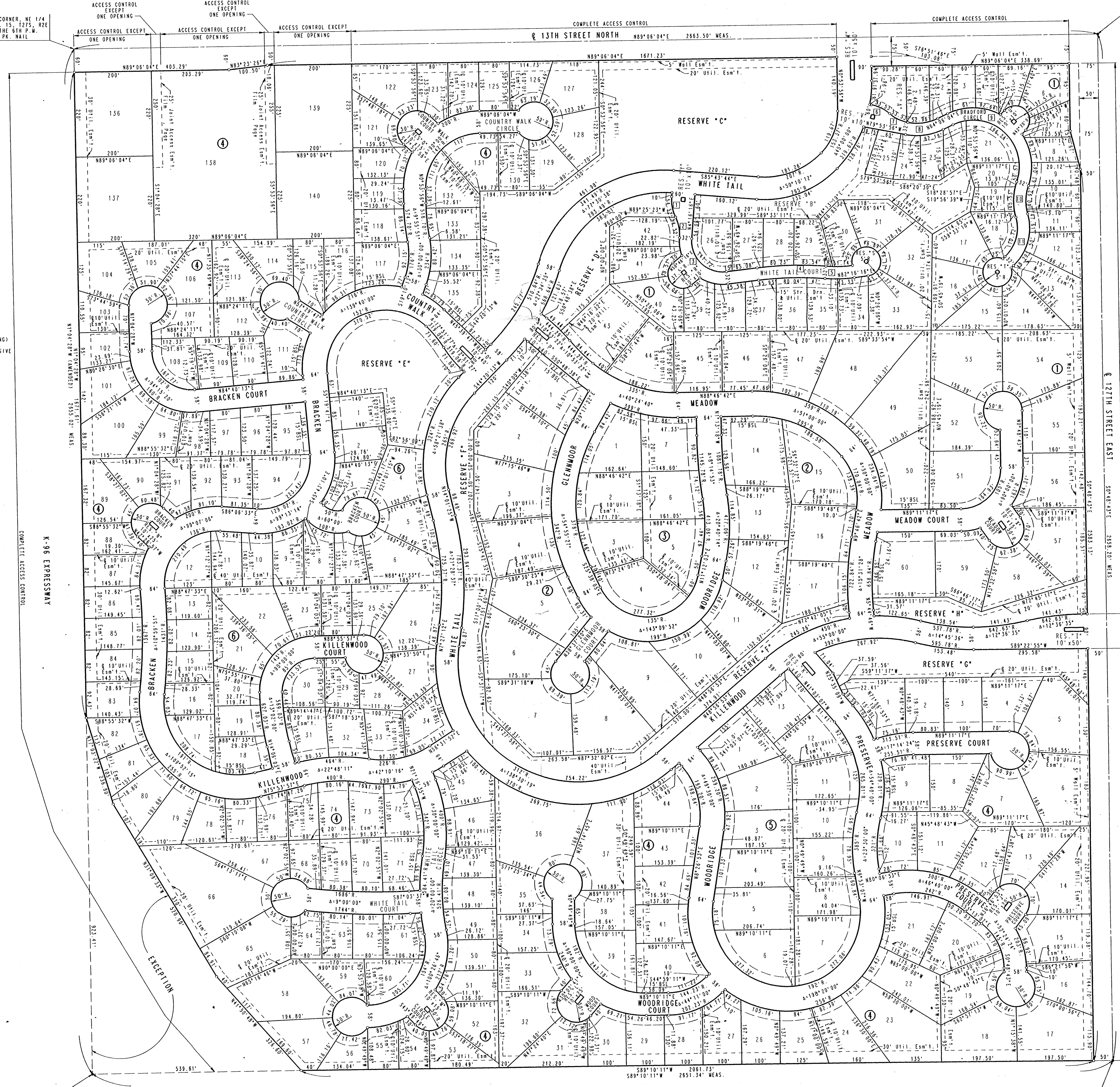


# WHITE TAIL ADDITION TO SEDGWICK COUNTY, KANSAS

NE CORNER, NE 1/4  
SEC. 15, T27S, R2E  
OF THE 6TH P.M.  
FD. 172-1-P.

NW CORNER, NE 1/4  
SEC. 15, T27S, R2E  
OF THE 6TH P.M.  
FD. PK. NAIL



### CURVE DATA

- 1 103.73°R  
A=30°06'49"
- 2 103.32°R  
A=30°06'49"
- 3 80°R  
A=101°30'00"  
112°R
- 4 861.79°R  
A=11°30'00"  
893.79°R
- 5 333°R  
A=12°00'00"  
365°R
- 6 99.92°R  
A=30°41'48"
- 7 99.92°R  
A=30°41'48"
- 8 128°R  
A=38°00'00"  
160°R
- 9 120°R  
A=12°00'00"  
152°R
- 10 121.17°R  
A=35°00'00"  
153.17°R
- 11 100.69°R  
A=65°00'00"  
132.69°R

SCALE: 1"=100'

○ = 3/4" IRON SET  
● = IRON FOUND

BENCH MARK:  
TOP OF 3/4" I.P. IN CENTERLINE  
OF 127TH STREET EAST AT EAST  
1/4 CORNER OF SECTION 15, T27S,  
R2E OF THE 6TH P.M.  
ELEV. 1372.44 M.S.L.

MINIMUM PAD ELEVATION (LOWEST OPENING)  
SHALL BE AS FOLLOWS:  
BLOCK 4, LOTS 127 THROUGH 135 INCLUSIVE  
ELEV. 1361.9 M.S.L.

K-96 EXPRESSWAY

SW CORNER, NE 1/4  
SEC. 15, T27S, R2E  
OF THE 6TH P.M.  
FD. 3/4" I.P.

SE CORNER, NE 1/4  
SEC. 15, T27S, R2E  
OF THE 6TH P.M.  
FD. 3/4" I.P.