

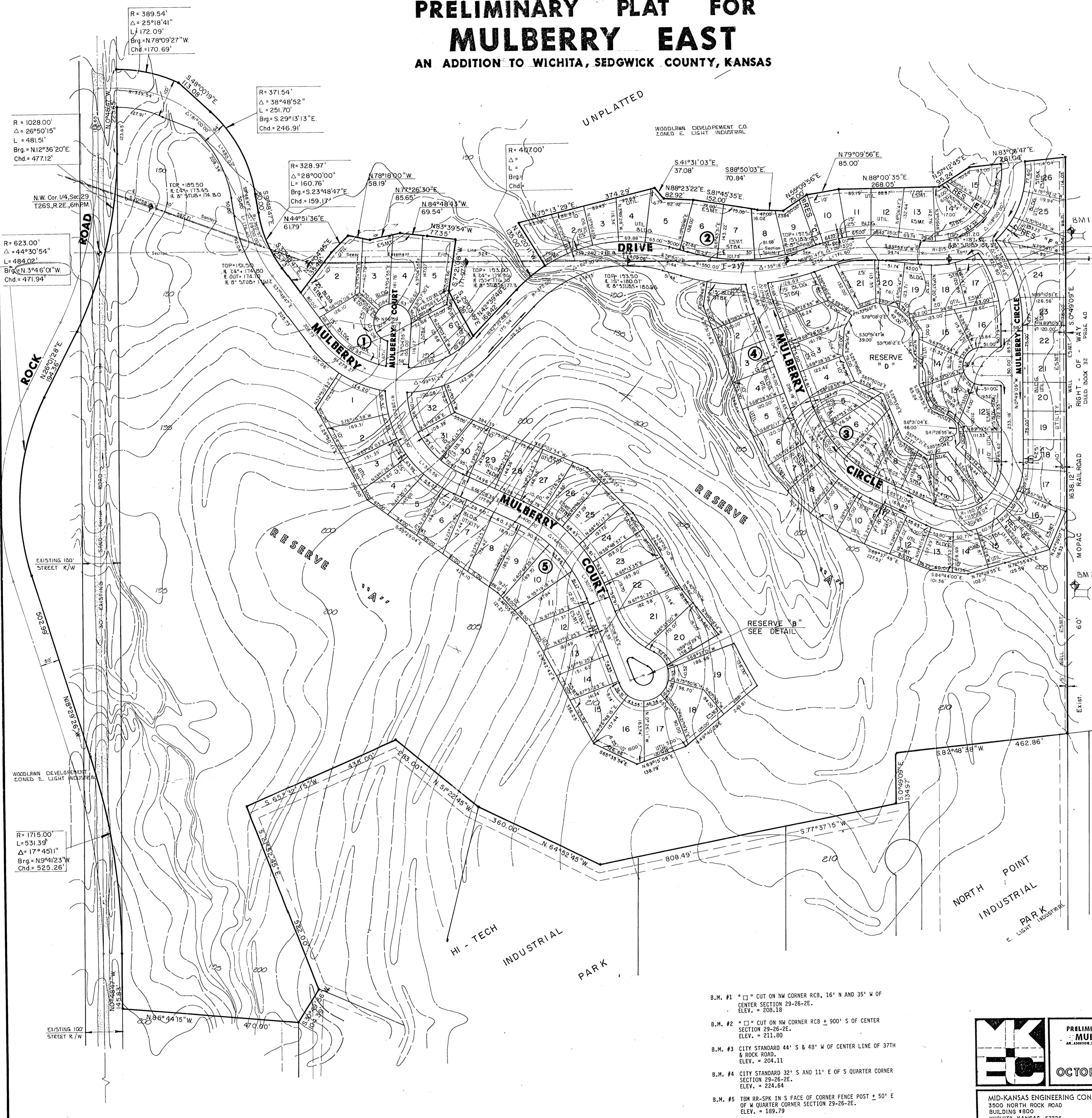
1215.09  
123.25  
1338.74

# PRELIMINARY PLAT FOR MULBERRY EAST

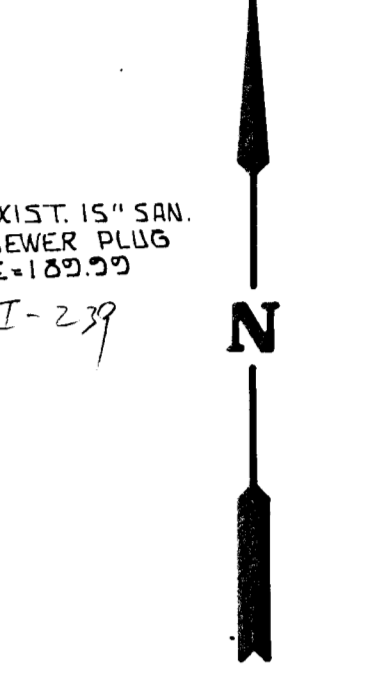
AN ADDITION TO WICHITA, SEDGWICK COUNTY, KANSAS

UNPLATTED

WOODLAWN DEVELOPMENT CO.  
ZONED E. LIGHT INDUSTRIAL

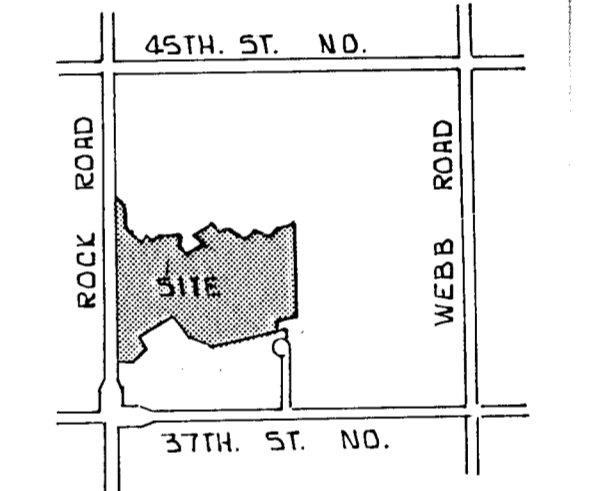


Center Section 29  
T.26S., R.2E., 6th PM.



Scale: 1" = 100'

LEGEND  
• Iron



LOCATION MAP

R = 1028.00'  
Δ = 26°50'15"  
L = 481.51'  
Brg = N12°36'20"E  
Chd = 477.12'

R = 389.54'  
Δ = 25°18'41"  
L = 172.09'  
Brg = N78°09'27"W  
Chd = 170.69'

R = 371.54'  
Δ = 38°48'52"  
L = 251.70'  
Brg = S29°13'13"E  
Chd = 246.91'

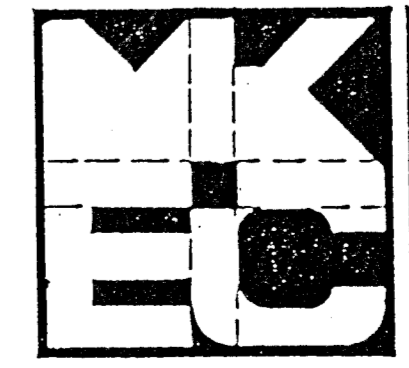
R = 487.00'  
Δ =  
L =  
Brg =  
Chd =

R = 328.97'  
Δ = 28°00'00"  
L = 160.76'  
Brg = S23°48'47"E  
Chd = 159.17'

R = 623.00'  
Δ = 44°30'54"  
L = 484.02'  
Brg = N3°46'01"W  
Chd = 471.94'

R = 1715.00'  
L = 531.39'  
Δ = 17°45'11"  
Brg = N9°41'23"W  
Chd = 525.26'

- B.M. #1 "□" CUT ON NW CORNER RCB, 16' N AND 35' W OF CENTER SECTION 29-26-2E. ELEV. = 208.18
- B.M. #2 "□" CUT ON NW CORNER RCB ± 900' S OF CENTER SECTION 29-26-2E. ELEV. = 211.80
- B.M. #3 CITY STANDARD 44' S & 48' W OF CENTER LINE OF 37TH & ROCK ROAD. ELEV. = 204.11
- B.M. #4 CITY STANDARD 32' S AND 11' E OF S QUARTER CORNER SECTION 29-26-2E. ELEV. = 224.64
- B.M. #5 TBM RR-SPK IN S FACE OF CORNER FENCE POST ± 50' E OF W QUARTER CORNER SECTION 29-26-2E. ELEV. = 189.79



PRELIMINARY PLAT FOR MULBERRY EAST  
AN ADDITION TO WICHITA, SEDGWICK COUNTY, KANSAS

OCTOBER 1985

MID-KANSAS ENGINEERING CONSULTANTS PA  
3500 NORTH ROCK ROAD  
BUILDING #800  
WICHITA, KANSAS 67226

682-6561

Design	
Drawn by	
Checked by	
Date	
Sheet	1