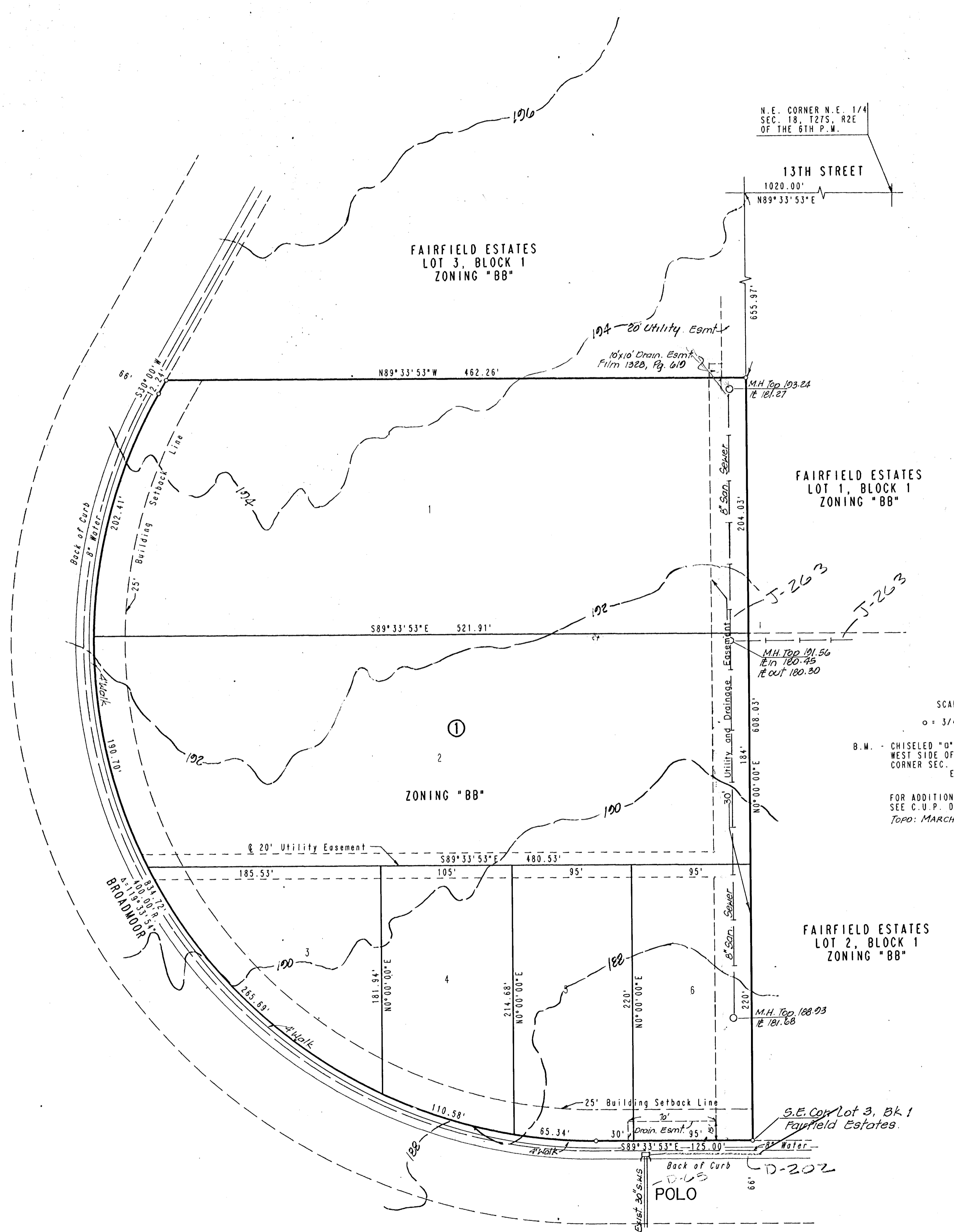


VICINITY MAP OF 6-21-93  
 CAPITAL ADDITION

OWNER: FAIRFIELD PARTNERS  
 c/o SHAROL RASBERRY  
 300 N. MAIN - SUITE 200  
 WICHITA, KANSAS 67202

ENGINEER: PROFESSIONAL ENGINEERING CONSULTANTS, P.A.  
 303 S. TOPEKA  
 WICHITA, KANSAS 67202

OFFICE COPY  
 DO NOT REMOVE



SCALE: 1"=50'  
 o = 3/4" IRON SET  
 B.M. - CHISELED "0" SOUTH END CURB RETURN  
 WEST SIDE OF ROCK ROAD AT EAST 1/4  
 CORNER SEC. 18, T27S, R2E  
 ELEV. -179.18 CITY DATUM  
 FOR ADDITIONAL BUILDING SETBACKS  
 SEE C.U.P. DP-146  
 TOPO: MARCH, 1985



N.E. CORNER N.E. 1/4  
 SEC. 18, T27S, R2E  
 OF THE 6TH P.M.

13TH STREET  
 1020.00'  
 N89°33'53"E

FAIRFIELD ESTATES  
 LOT 3, BLOCK 1  
 ZONING "BB"

FAIRFIELD ESTATES  
 LOT 1, BLOCK 1  
 ZONING "BB"

ZONING "BB"

FAIRFIELD ESTATES  
 LOT 2, BLOCK 1  
 ZONING "BB"

S.E. Cor Lot 3, Bl. 1  
 Fairfield Estates.

POLO