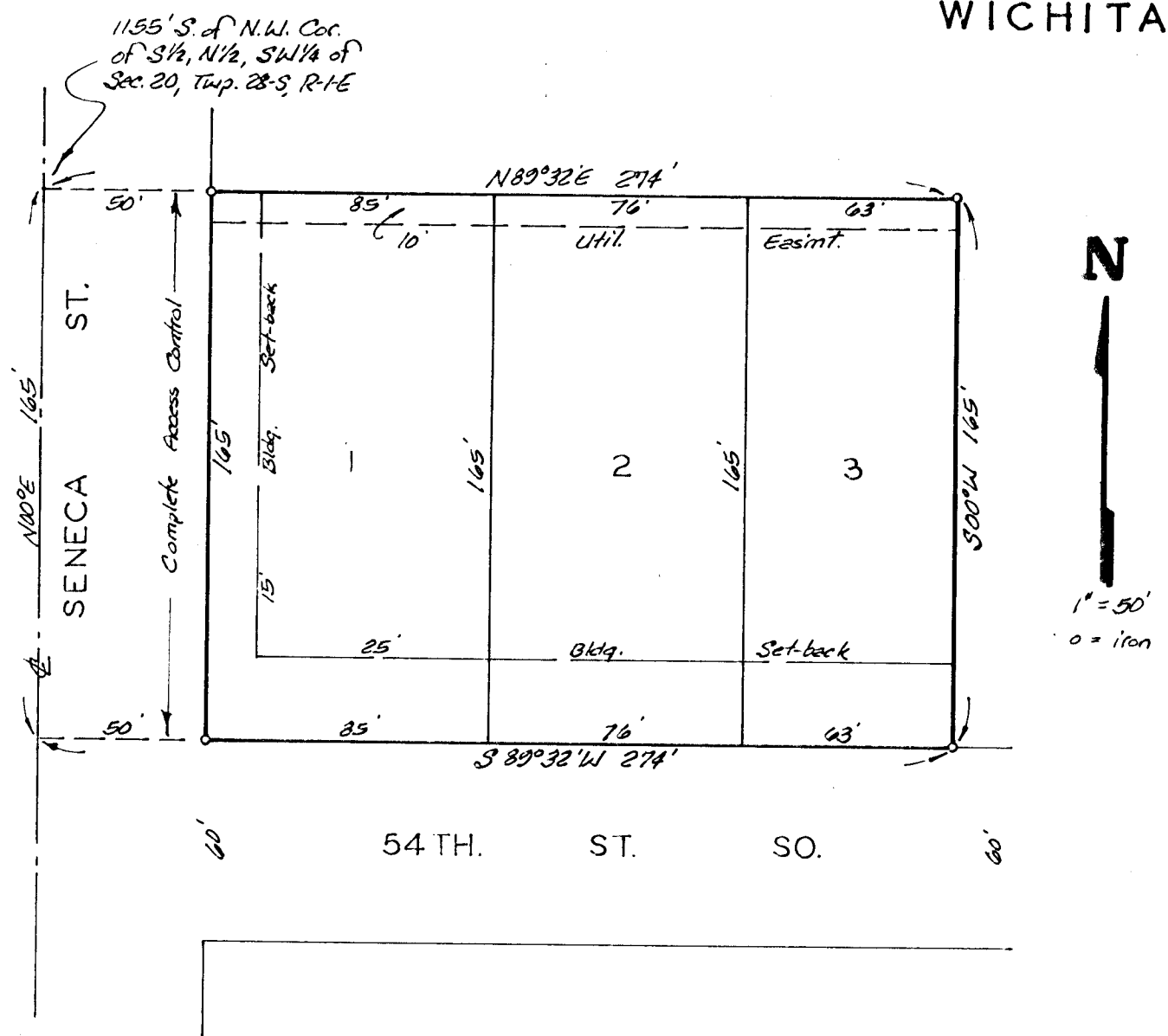
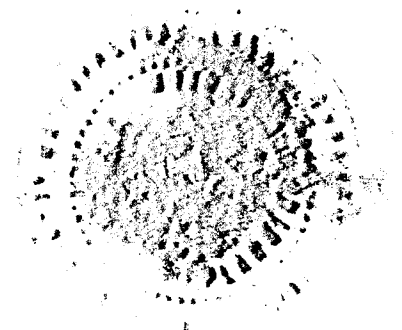


Carol Addition

CAROL ADDITION

WICHITA, KANSAS.



This plat of "CAROL ADDITION" Wichita, Kansas has been submitted to and approved by the Wichita-Sedgwick County Metropolitan Area Planning Commission, Wichita, Kansas.
 Dated this 7th day of February 1985.

Wichita-Sedgwick County Metropolitan Area Planning Commission.
 James C. Wilson Chairman
 Robert A. Selen Secretary

This plat approved and all dedications shown hereon accepted by the Board of Commissioners of the City of Wichita, Kansas, this 14th day of March 1985.

Robert C. Brown Mayor
 Donald C. Gaisiek City Clerk

State of Kansas } S.S. We, Baughman Company, P.A. Surveyors in aforesaid county and state do hereby certify that we have surveyed and platted "CAROL ADDITION", Wichita, Kansas and that the accompanying plat is a true and correct exhibit of the property surveyed, described as beginning 1155 feet south of the N.W. Corner of the SW1/4 of the N1/2 of the SW1/4 of Sec. 20, Twp. 28-S, R-1-E of the 6th, P.M., Sedgwick County, Kansas; thence east, 274 feet; thence south 165 feet; thence west, 274 feet; thence north, 165 feet to beginning.
 4-26-85
 date
 William L. Kerber
 William L. Kerber Surveyor

Know all men by these presents that we, the undersigned, have caused the land described in the surveyors certificate to be platted into lots and streets to be known as "CAROL ADDITION", Wichita, Kansas. The utility easement is hereby granted for the construction and maintenance of all public utilities. The street is hereby dedicated to and for the use of the public. All abutters rights of access to or from Seneca St. over and across the west line of Lot 1 are hereby granted to the City of Wichita, Kansas.
 Wadley Homes, Inc.
 Warren Duane Wadley President

Entered on transfer record this _____ day of _____ 1985.
 Don Wright County Clerk

State of Kansas } S.S. This is to certify that this plat has been filed for record in the office of the Register of Deeds this _____ day of _____ 1985, at _____ o'clock _____ M; and is duly recorded.

Rat Kettler Register of Deeds
 Ed Resa Deputy

State of Kansas } S.S. The foregoing instrument was acknowledged before me, this _____ day of _____ 1985 by Warren Duane Wadley, President of Wadley Homes, Inc. on behalf of the corporation.
 Mark A. Sauer Notary Public

