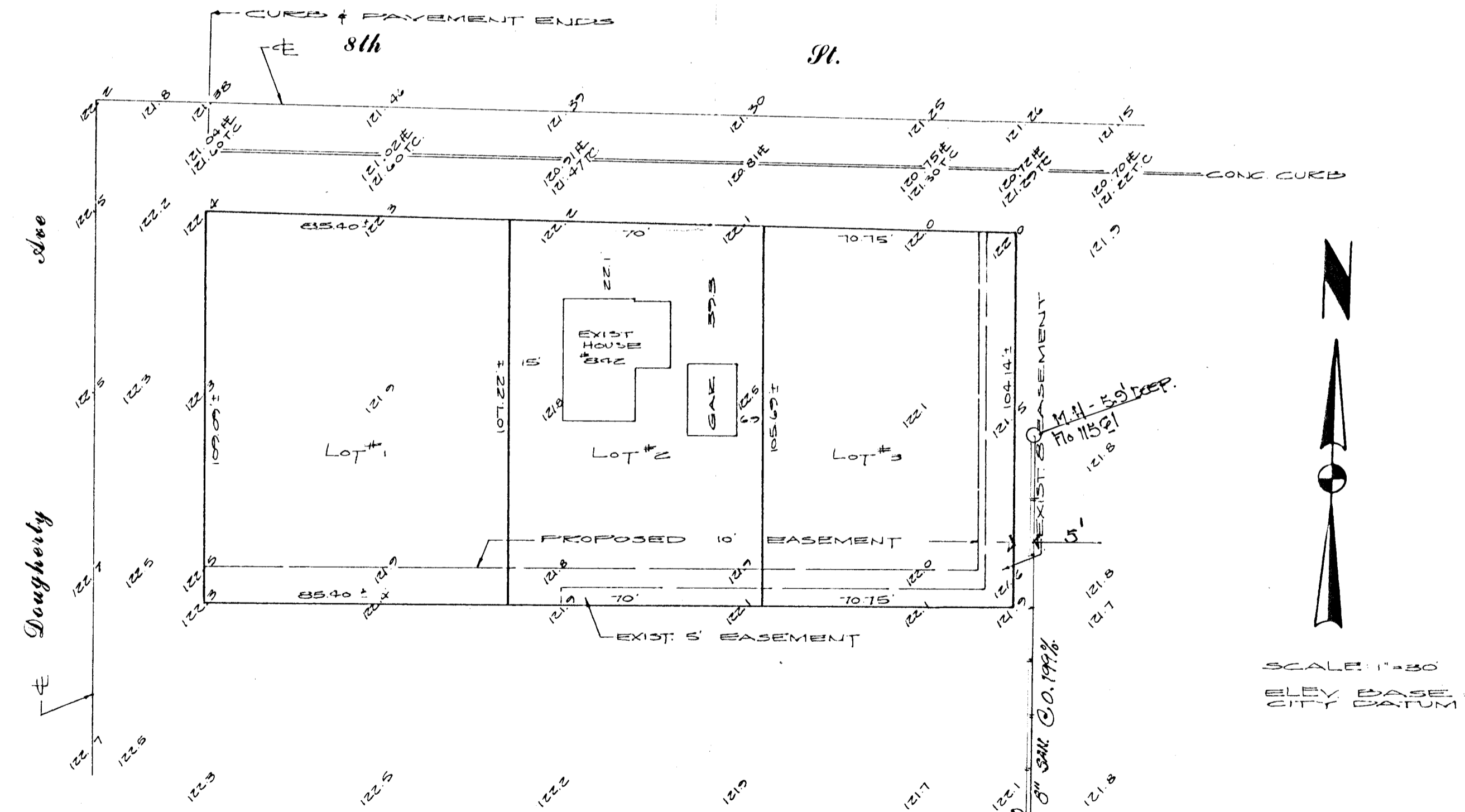


TOPOGRAPHIC SURVEY OF

Carol Jean Addition to Wichita, Kansas.

PREPARED BY:
AIR CAPITOL LAND SURVEYORS
1225 W. 23RD ST. NO.
WICHITA, KANSAS 67204



LEGAL DESCRIPTION: LOT #1, REPLAY OF LOTS 34, 5, 6, 7, 8, 13
CENTRAL PLACE ADDITION

UTILITY DATA:
 WATER: CITY OF WICHITA, 8" MAIN E/S DOUGHERTY &
 6" MAIN, S/S 8TH ST
 SAN: DENVER, 4" IN ALLEY EAST SIDE OF PROPERTY
 GAS: GAS SERVICE CO., 2" STEEL NORTH SIDE OF 8TH ST
 ELECTRIC: ALL STANDARD RESIDENTIAL HOOKUPS AVAILABLE

SCALE: 1"=30'
 ELEV. BASE: CITY DATUM