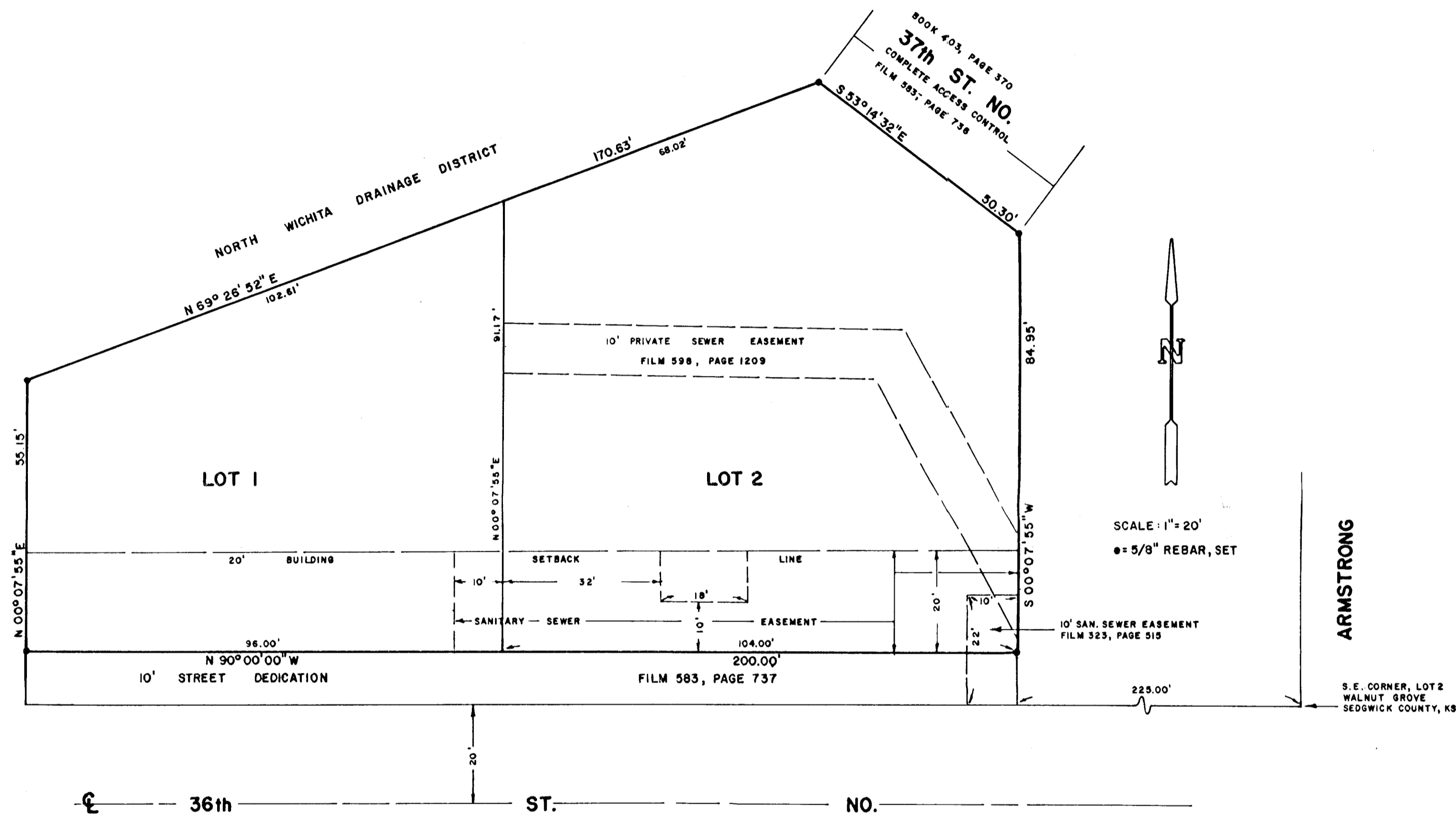


Lewis C. Carpenter  
Addition

# LEWIS C. CARPENTER ADDITION

## WICHITA, SEDGWICK COUNTY, KANSAS



**LEGAL DESCRIPTION:**

Beginning at a point on the South line of Lot 2, Walnut Grove, Sedgwick County, Kansas, 225 feet West of the Southeast corner of said Lot 2, thence West along the South line of said Lot 2, 200 feet; thence North parallel to the East line of said Lot 2, 65.15 feet to a point on the South line of the North Wichita Drainage District Right-of-Way, as condemned in District Court Case #68078; thence Northeasterly along the South line of said Right-of-Way to a point 225 feet West of the East line of said Lot 2; thence South 140.25 feet to the point of beginning, except the South 10 feet thereof for road, and except that part taken for Right-of-Way for 37th Street North as recorded in Misc. Book 403, Page 370.

STATE OF KANSAS )  
COUNTY OF SEDGWICK ) ss

I, Arthur G. Griffiths, a licensed land surveyor in the aforesaid County and State, do hereby certify that I have caused the tract of land as set forth in the Legal Description to be surveyed and platted and that said survey and the accompanying exhibit are true and correct to be best of my knowledge and information available.

*Arthur G. Griffiths*  
ARTHUR G. GRIFFITHS LS #244 DATE 5-17-84

Know all people by these presents that I, Lewis C. Carpenter, have caused the tract of land as set forth in the Legal Description to be surveyed and platted into two lots to be known as "Lewis C. Carpenter Addition", Wichita, Sedgwick County, Kansas. Utility easements as indicated on the plat, if any, are hereby granted for the construction and maintenance of all public utilities.

*Lewis C. Carpenter*  
LEWIS C. CARPENTER

STATE OF KANSAS )  
COUNTY OF SEDGWICK ) ss

Be it remembered that on this 17th day of May, 1984, before me, a Notary Public in the aforesaid County and State, came Lewis C. Carpenter, to me personally known to be the same person who executed the foregoing instrument of writing and duly acknowledged the execution of same. In testimony whereof, I have hereunto set my hand and affixed my notarial seal the year and day above written.

*Dorothy K. White*, Notary Public

My Appointment Expires: 20 January, 1986

1-20-86

This plat of "Lewis C. Carpenter Addition", Wichita, Sedgwick County, Kansas has been submitted to and approved by the Wichita-Sedgwick County Metropolitan Area Planning Commission, Wichita, Kansas.

Dated this 17th day of May, 1984.

WICHITA-SEDGWICK COUNTY METROPOLITAN AREA PLANNING COMMISSION

By *James C. Wilson*, Vice Chairman  
JAMES C. WILSON  
*Robert A. Lakin*, Secretary  
ROBERT A. LAKIN

This plat approved and all dedications shown hereon, if any, accepted by the Board of City Commissioners of the City of Wichita, Kansas, this 12th day of June, 1984.

*Robert C. Knight*, Mayor  
ROBERT C. KNIGHT  
*Donald C. Gisick*, City Clerk  
DONALD C. GISICK

This plat approved and all dedications shown hereon, if any, accepted by the Board of County Commissioners of Sedgwick County, Kansas, this \_\_\_ day of \_\_\_, 19\_\_.

\_\_\_\_\_, Chairman  
JACK SPRATT  
\_\_\_\_\_, Commissioner  
DONALD E. GRAGG  
\_\_\_\_\_, Commissioner  
TOM SCOTT  
ATTEST: \_\_\_\_\_, County Clerk  
DOROTHY K. WHITE

Entered on transfer record this \_\_\_ day of \_\_\_, 19\_\_.

\_\_\_\_\_, County Clerk  
DOROTHY K. WHITE

STATE OF KANSAS )  
COUNTY OF SEDGWICK ) ss

This is to certify that this instrument was filed for record in the Register of Deeds Office, at \_\_\_ o'clock \_\_\_ M. on the \_\_\_ day of \_\_\_, 19\_\_.

\_\_\_\_\_, Register of Deeds  
BETTE F. MC CART  
\_\_\_\_\_, Deputy  
PAT KETTLER